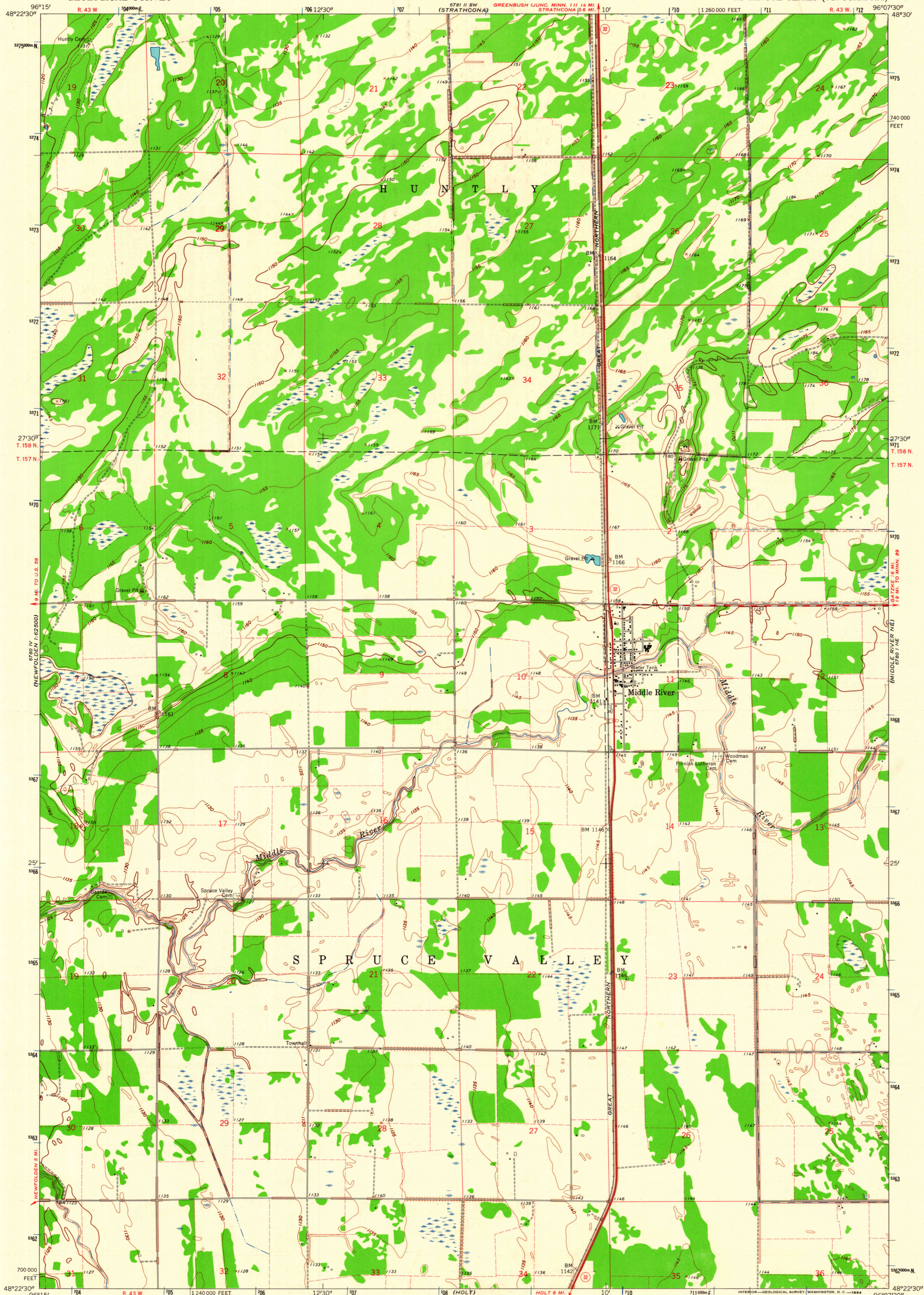


UNITED STATES
DEPARTMENT OF THE INTERIOR
GEOLOGICAL SURVEY

MIDDLE RIVER QUADRANGLE
MINNESOTA - MARSHALL CO.
7.5 MINUTE SERIES (TOPOGRAPHIC)



Mapped, edited, and published by the Geological Survey

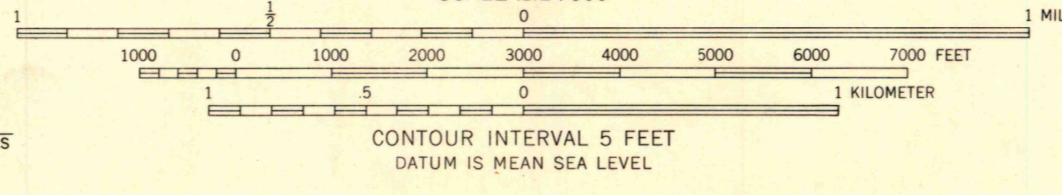
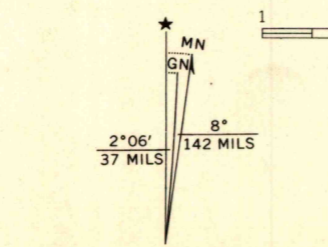
Control by USGS and USC&GS

Planimetry by photogrammetric methods from aerial photographs taken 1954. Topography by planetable surveys 1962

Polyconic projection. 1927 North American datum

10,000-foot grid based on Minnesota coordinate system, north zone 1000-meter Universal Transverse Mercator grid ticks, zone 14, shown in blue

Fine red dashed lines indicate selected fence and field lines where generally visible on aerial photographs. This information is unchecked



USGS
Historical Files
Topographic Division



ROAD CLASSIFICATION

Heavy-duty	Light-duty
Medium-duty	Unimproved dirt
○ State Route	

MIDDLE RIVER, MINN.
N4822.5 - W9607.5/7.5
1962

THIS MAP COMPLIES WITH NATIONAL MAP ACCURACY STANDARDS
FOR SALE BY U. S. GEOLOGICAL SURVEY, DENVER 25, COLORADO OR WASHINGTON 25, D. C.
A FOLDER DESCRIBING TOPOGRAPHIC MAPS AND SYMBOLS IS AVAILABLE ON REQUEST

AMS 6780 1 NW - SERIES W872

U.S.G.S.
FILE COPY
TOPOGRAPHIC DIVISION
APR 2 1964

2615