

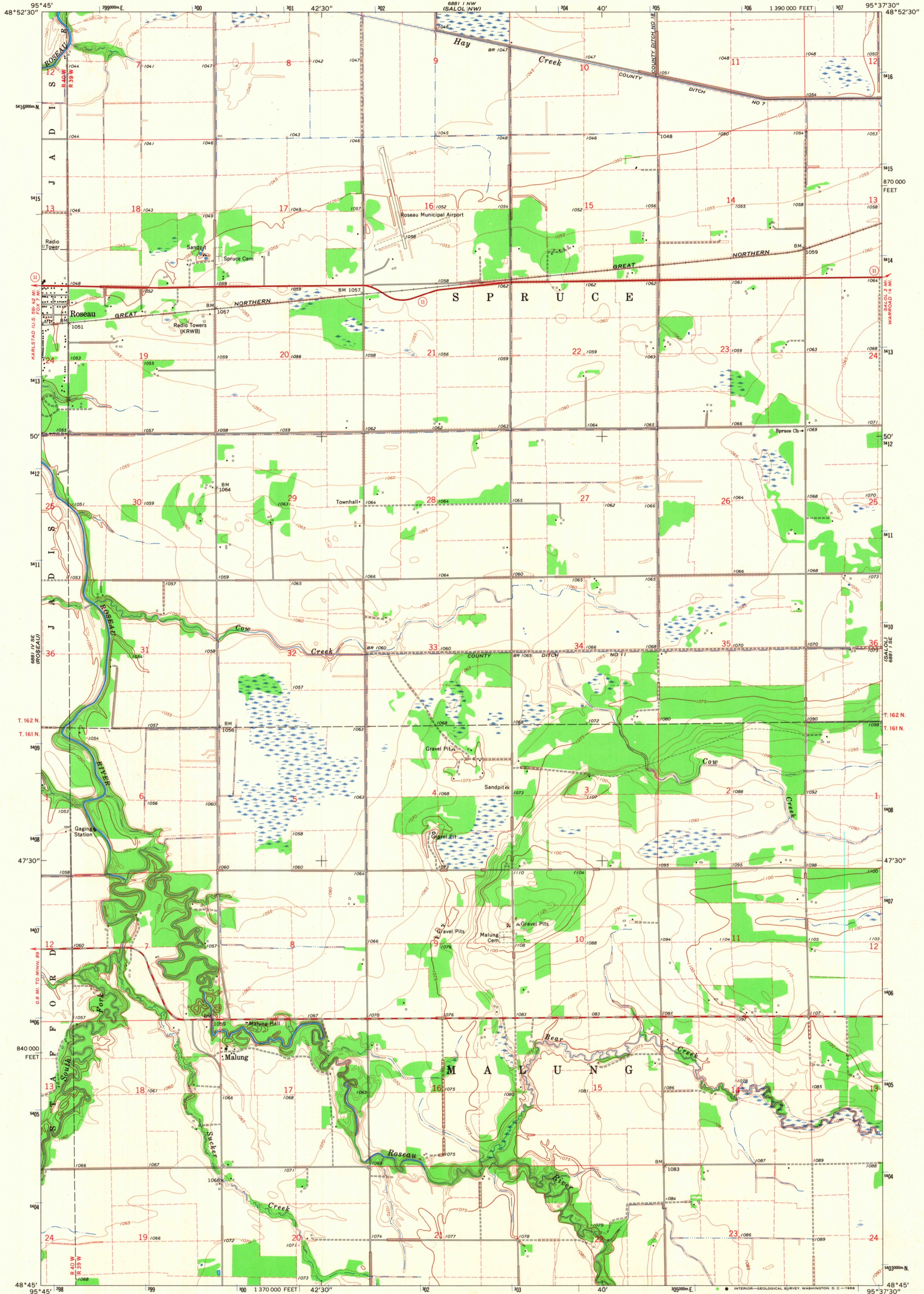
6881 I NE
(ROSEAU NE)

UNITED STATES
DEPARTMENT OF THE INTERIOR
GEOLOGICAL SURVEY

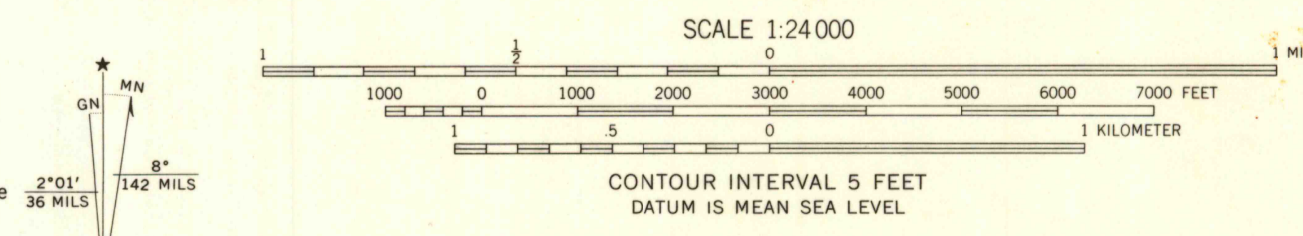
STATE OF MINNESOTA
DEPARTMENT OF ADMINISTRATION

MALUNG QUADRANGLE
MINNESOTA—ROSEAU CO.
7.5 MINUTE SERIES (TOPOGRAPHIC)

6881 I NE
(ROSEAU NE)



Mapped, edited, and published by the Geological Survey
 Control by USGS and USC&GS
 Planimetry by photogrammetric methods from aerial photographs taken 1965. Topography by planetable surveys 1966
 Polyconic projection. 1927 North American datum
 10,000-foot grid based on Minnesota coordinate system, north zone
 1000-meter Universal Transverse Mercator grid ticks, zone 15, shown in blue
 Fine red dashed lines indicate selected fence and field lines where generally visible on aerial photographs
 This information is unchecked



USGS
 Historical File
 Topographic Division

ROAD CLASSIFICATION
 Heavy-duty
 Medium-duty
 Light-duty
 Unimproved dirt
 State Route

U.S.G.S.
 FILE COPY
 TOPOGRAPHIC DIVISION

THIS MAP COMPLIES WITH NATIONAL MAP ACCURACY STANDARDS
 FOR SALE BY U. S. GEOLOGICAL SURVEY, DENVER, COLORADO 80225, OR WASHINGTON, D. C. 20242
 A FOLDER DESCRIBING TOPOGRAPHIC MAPS AND SYMBOLS IS AVAILABLE ON REQUEST

MALUNG, MINN.
 N4845—W9537.5/7.5

2785
 MAR 11 1969

1966
 AMS 6881 I SW—SERIES V872