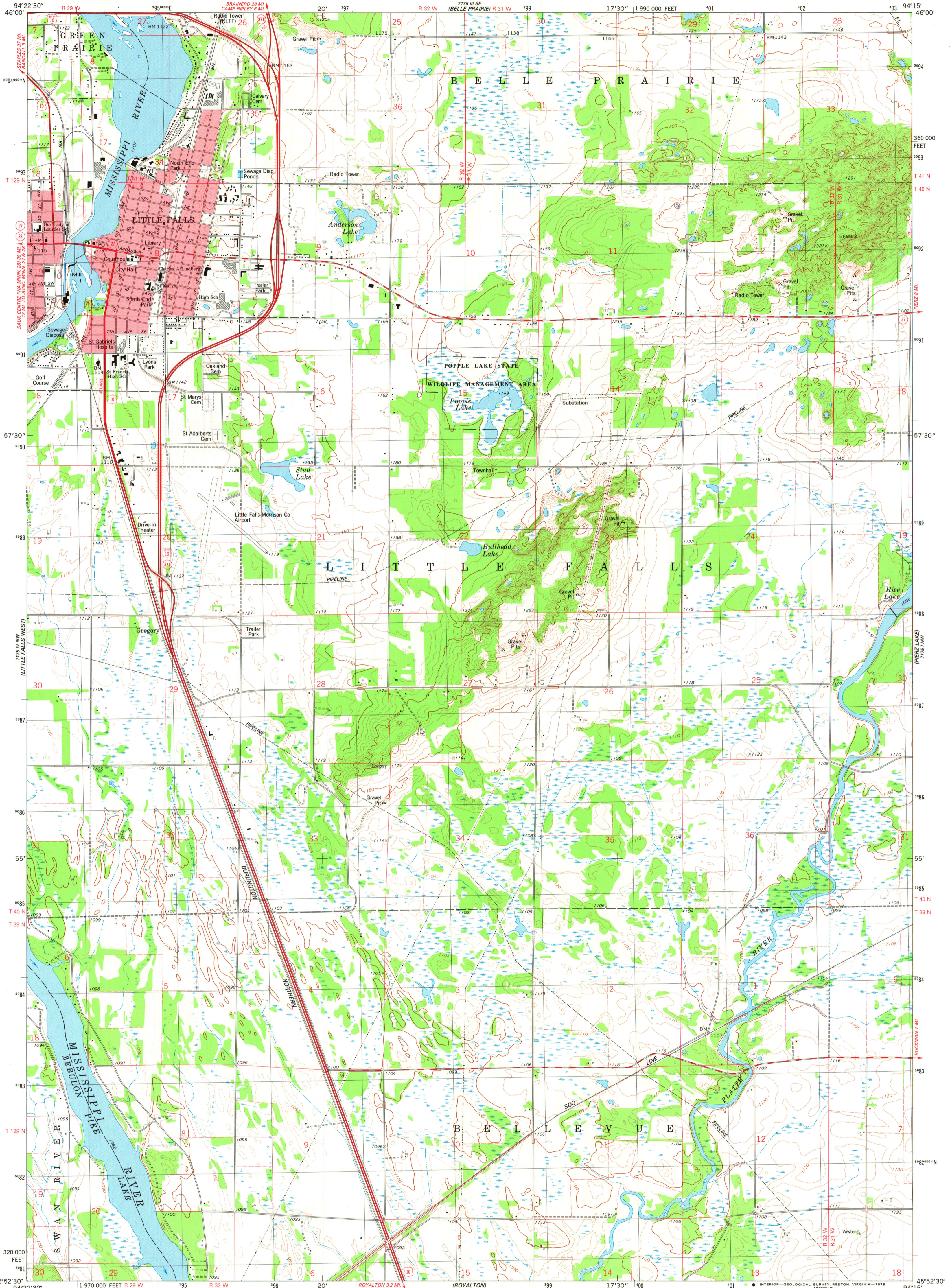
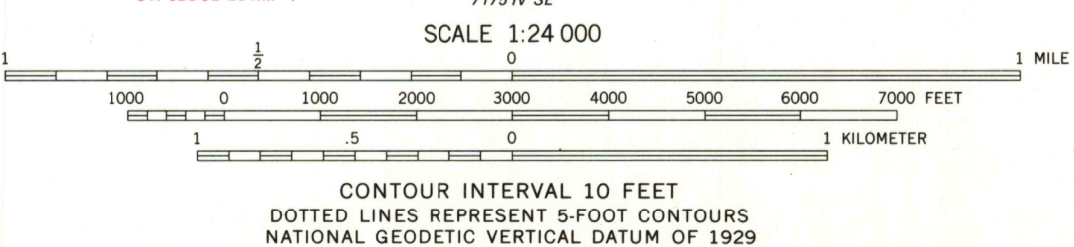


778 SW
(RANDALL)

778 SW
(LASTRUP 1:62 900)



Mapped, edited, and published by the Geological Survey
Control by USGS and NOS/NOAA
Topography by photogrammetric methods from aerial photographs
taken 1975. Field checked 1975. Map edited 1978
Projection and 10,000-foot grid ticks: Minnesota coordinate
system, central zone (Lambert conformal conic)
1000-meter Universal Transverse Mercator grid, zone 15
1927 North American datum
Red tint indicates areas in which only landmark buildings are shown
Fine red dashed lines indicate selected fence and field lines where
generally visible on aerial photographs. This information is unchecked



ROAD CLASSIFICATION
Primary highway, hard surface
Secondary highway, hard surface
Light-duty road, hard or improved surface
Unimproved road
Interstate Route
U. S. Route
State Route



LITTLE FALLS EAST, MINN.
NE/4 LITTLE FALLS 15' QUADRANGLE
N4552.5-W9415/7.5

THIS MAP COMPLIES WITH NATIONAL MAP ACCURACY STANDARDS
FOR SALE BY U.S. GEOLOGICAL SURVEY, RESTON, VIRGINIA 22092
A FOLDER DESCRIBING TOPOGRAPHIC MAPS AND SYMBOLS IS AVAILABLE ON REQUEST

USGS
Historical File
Topographic Division
1978
AMS 7175 IV NE—SERIES V872

DEC 11 1978
3300