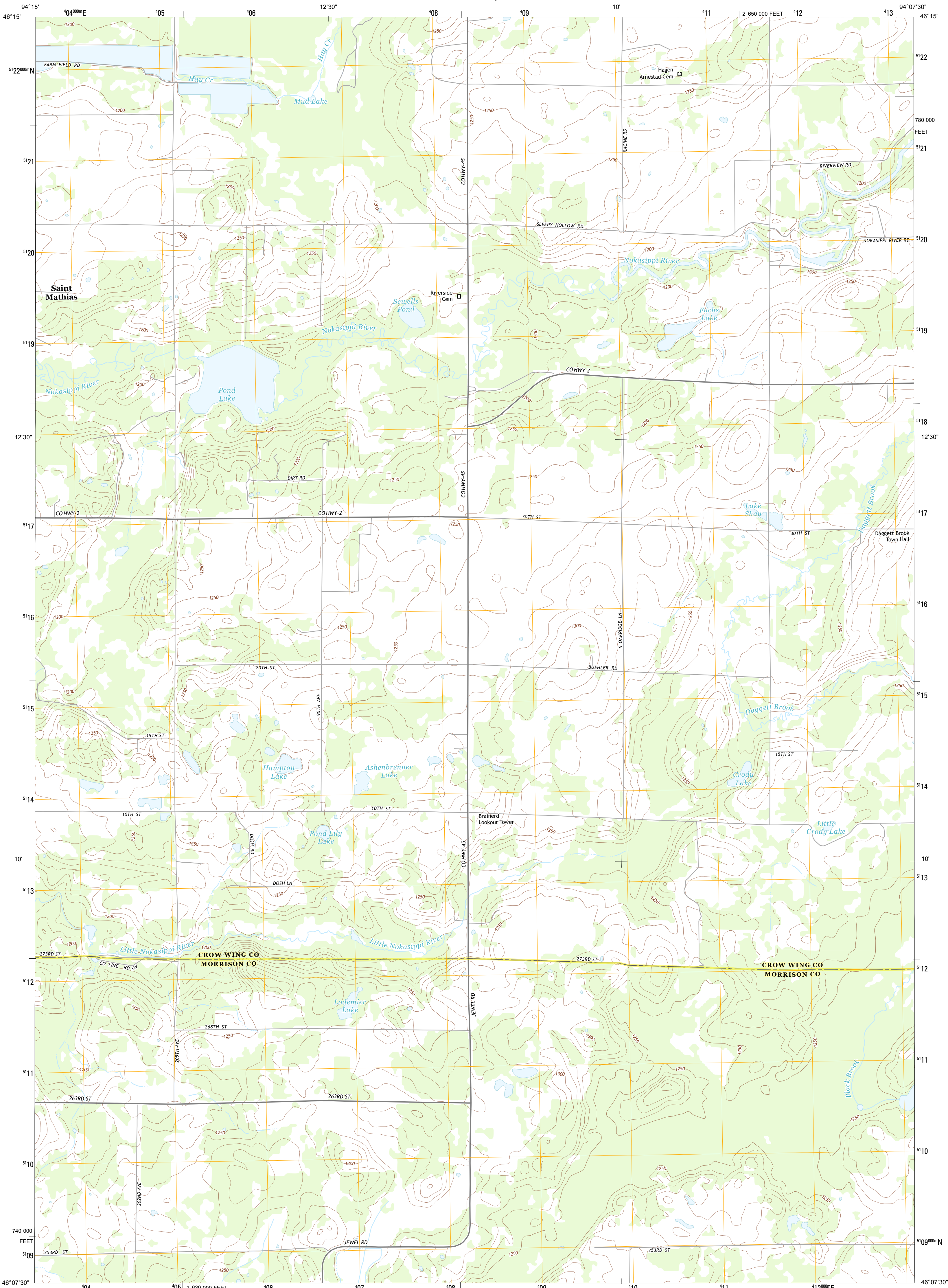




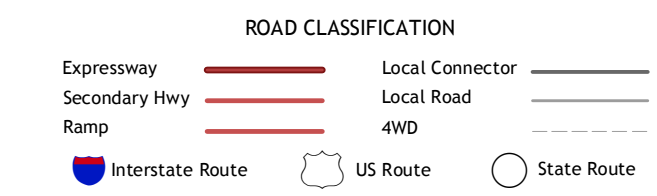
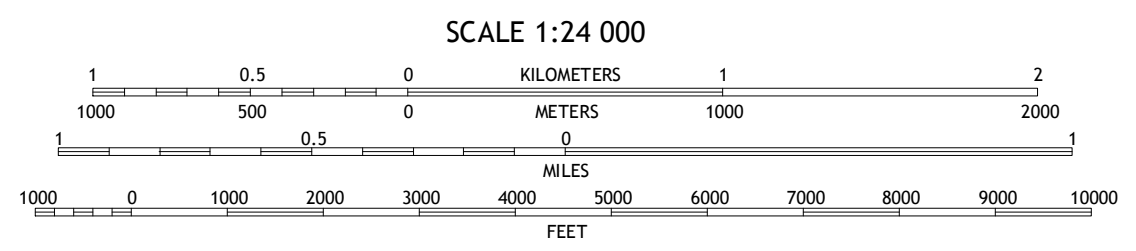
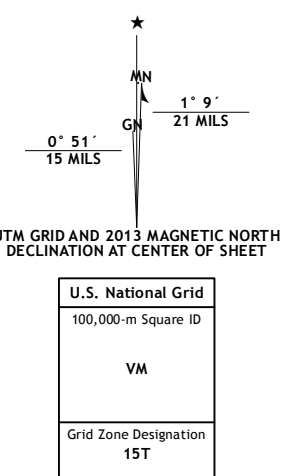
U.S. DEPARTMENT OF THE INTERIOR  
U. S. GEOLOGICAL SURVEY



LASTRUP NW QUADRANGLE  
MINNESOTA  
7.5-MINUTE SERIES



Produced by the United States Geological Survey  
North American Datum of 1983 (NAD83)  
World Geodetic System of 1984 (WGS84). Projection and  
1 000-meter grid: Universal Transverse Mercator, Zone 15T  
10 000-foot ticks: Minnesota Coordinate System of 1983 (central zone)



ADJOINING 7.5' QUADRANGLES

Baxter	Brainerd	South Long Lake
Fort Ripley	Laststrup NW	Shepard
Belle Prairie	Freedom	Laststrup

LASTRUP NW, MN  
2013

CONTOUR INTERVAL 10 FEET  
NORTH AMERICAN VERTICAL DATUM OF 1988  
This map was produced to conform with the  
National Geospatial Program US Topo Product Standard, 2011.  
A metadata file associated with this product is draft version 0.6.11