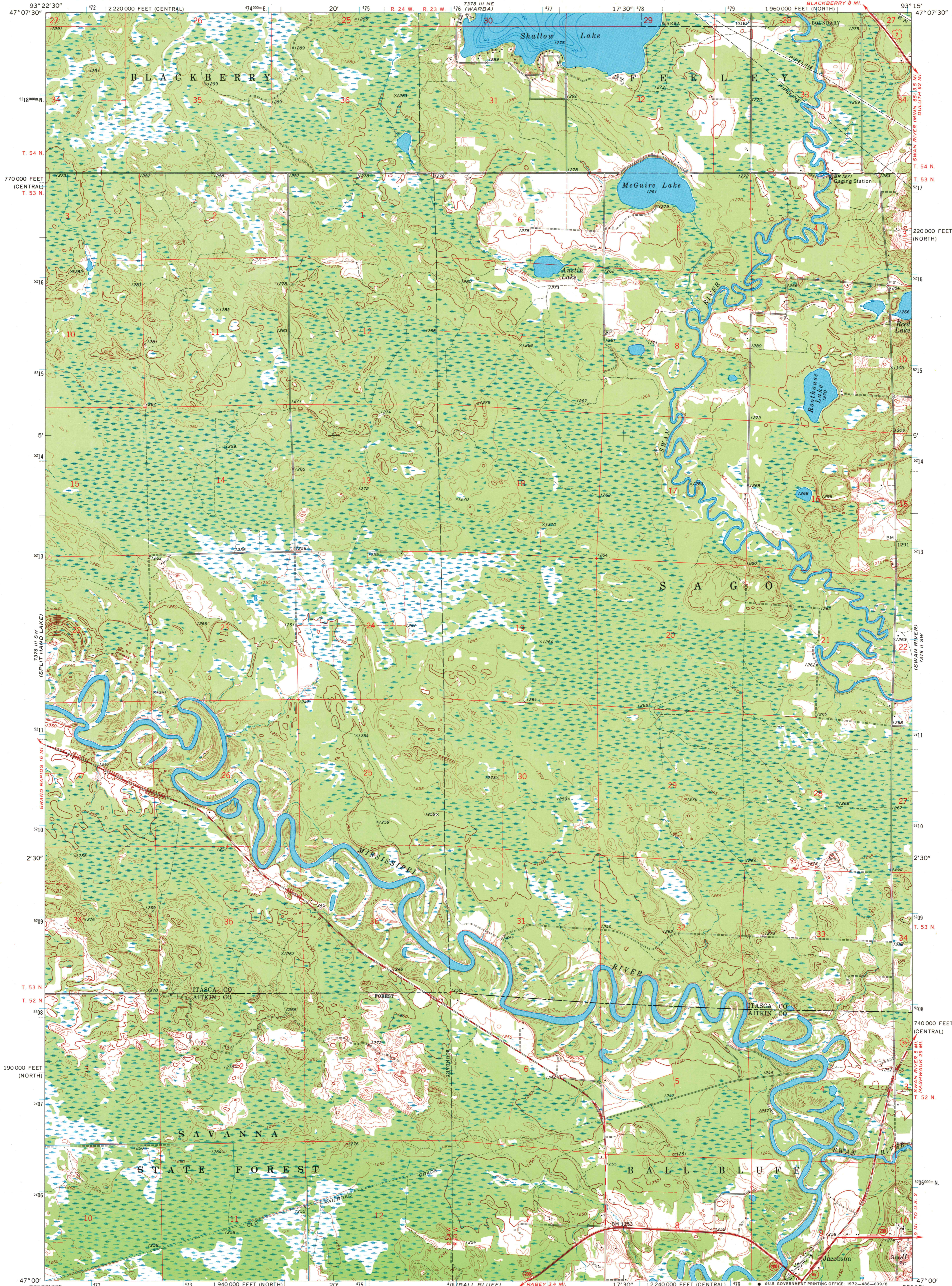


7378 III NE (WARBA)  
7378 III SW (SPLIT HAND LAKE)  
7378 III SE (DULUTH)  
7378 III NW (GOODLAND)  
7378 III SW (SPLIT HAND LAKE)  
7378 III NW (WARBA)  
7378 III SE (DULUTH)  
7378 III NW (GOODLAND)

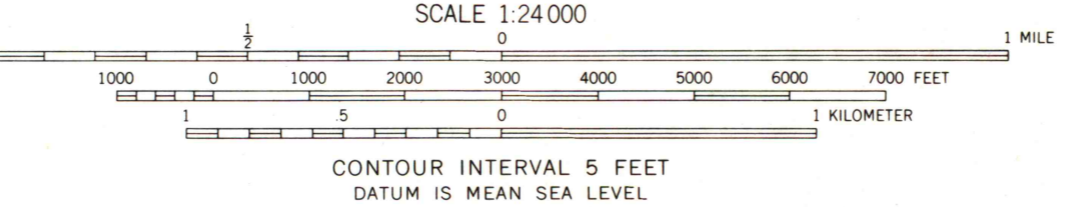
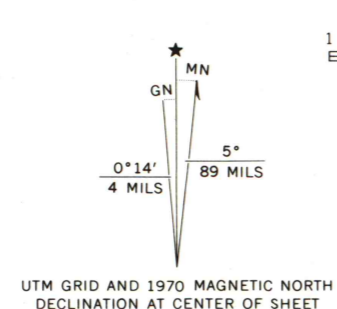
UNITED STATES  
DEPARTMENT OF THE INTERIOR  
GEOLOGICAL SURVEY

STATE OF MINNESOTA  
DEPARTMENT OF ADMINISTRATION

JACOBSON QUADRANGLE  
MINNESOTA  
7.5 MINUTE SERIES (TOPOGRAPHIC)  
BLACKBERRY 9 MI.



Maped, edited, and published by the Geological Survey  
Control by USGS and USC&GS  
Topography by photogrammetric methods from aerial photographs taken 1966 and 1969. Field checked 1970  
Hydrography compiled from information furnished by Minnesota Department of Conservation  
Polyconic projection. 1927 North American datum  
10,000-foot grids based on Minnesota coordinate system, north and central zones  
1000-meter Universal Transverse Mercator grid ticks, zone 15, shown in blue  
Fine red dashed lines indicate selected fence and field lines where generally visible on aerial photographs. This information is unchecked



ROAD CLASSIFICATION  
Primary highway, all weather, hard surface  
Secondary highway, all weather, hard surface  
Light-duty road, all weather, improved surface  
Unimproved road, fair or dry weather  
U.S. Route  
State Route



JACOBSON, MINN.  
N4700-W9315/7.5

THIS MAP COMPLIES WITH NATIONAL MAP ACCURACY STANDARDS  
FOR SALE BY U.S. GEOLOGICAL SURVEY, DENVER, COLORADO 80225, OR WASHINGTON, D.C. 20242  
A FOLDER DESCRIBING TOPOGRAPHIC MAPS AND SYMBOLS IS AVAILABLE ON REQUEST

MAP AND AIR PHOTO LIBRARY  
MAR 13 1973  
University of Wisconsin

AMS 7378 III SE-SERIES V872