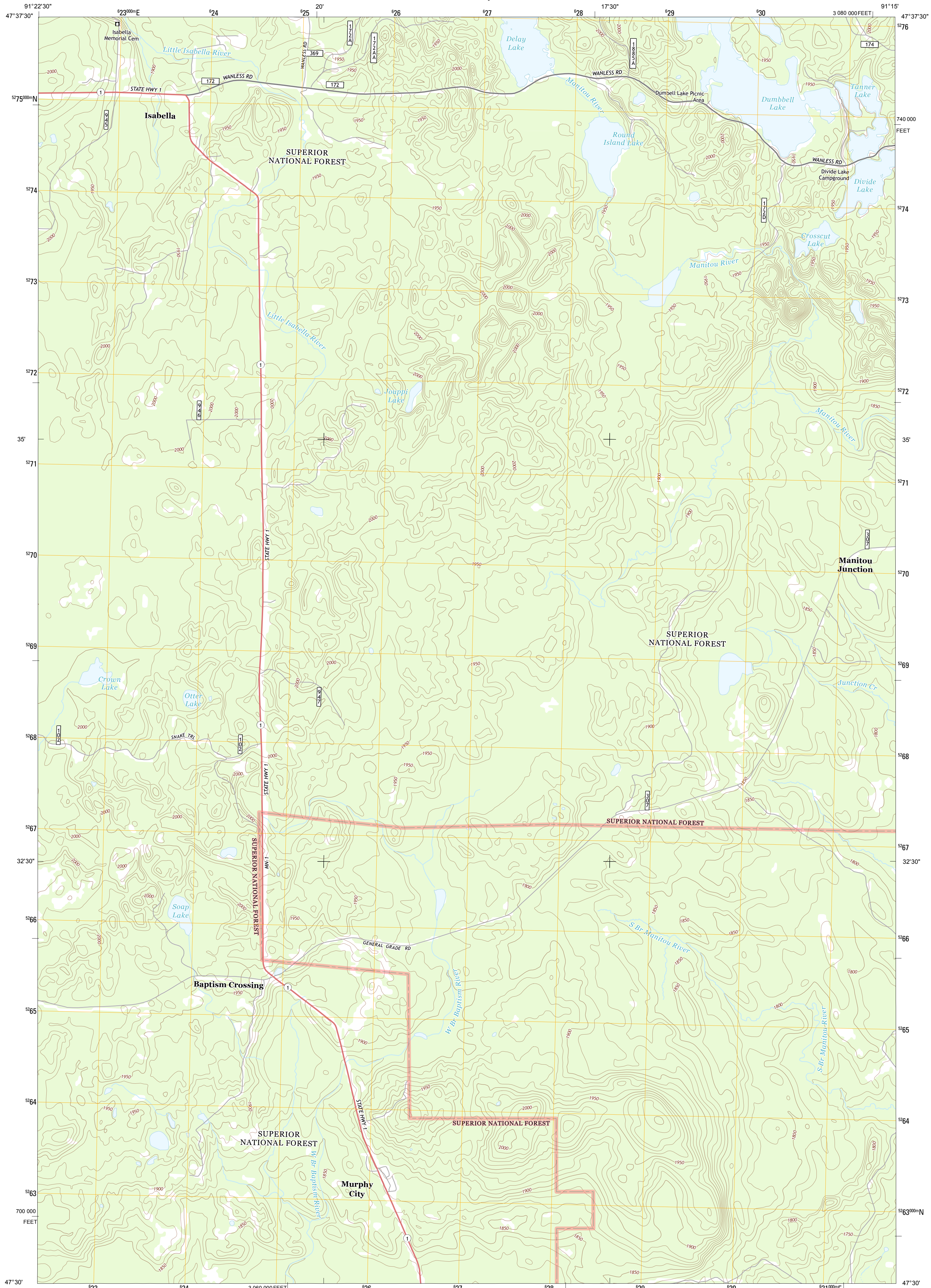




U.S. DEPARTMENT OF THE INTERIOR
U. S. GEOLOGICAL SURVEY

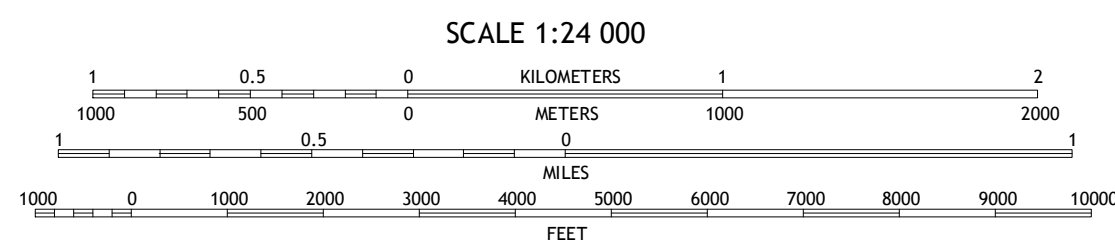
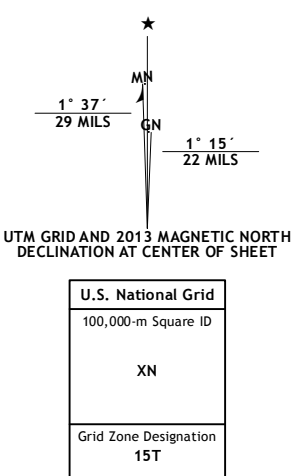


ISABELLA QUADRANGLE
MINNESOTA-LAKE CO.
7.5-MINUTE SERIES



Produced by the United States Geological Survey
North American Datum of 1983 (NAD83)
World Geodetic System of 1984 (WGS84). Projection and
1 000-meter grid: Universal Transverse Mercator, Zone 15T
10 000-foot ticks: Minnesota Coordinate System of 1983 (north
zone)

Imagery.....NAIP, August 2010
Roads.....2006-2012 TomTom
Roads within US Forest Service Lands.....FS Topo Data
with limited Forest Service updates, 2013
Names.....GNIS, 2013
Hydrography.....National Hydrography Dataset, 2010
Contours.....National Elevation Dataset, 2007
Boundaries.....Census, IBC, USGS, 1972 - 2012



QUADRANGLE LOCATION

Alltawan Lake	Sawhill Landing	Silver Island Lake
Isabella Station	Isabella	Cabin Lake
Cloquet Lake	Boyle Lake	Finland

ROAD CLASSIFICATION

	Expressway		Local Connector
	Secondary Hwy		Local Road
	Ramp		4WD
	Interstate Route		US Route
	FS Primary Route		FS Passenger Route
	FS High Clearance Route		State Route

Check with local Forest Service unit
for current travel conditions and restrictions.

ISABELLA, MN
2013

ADJOINING 7.5 QUADRANGLES