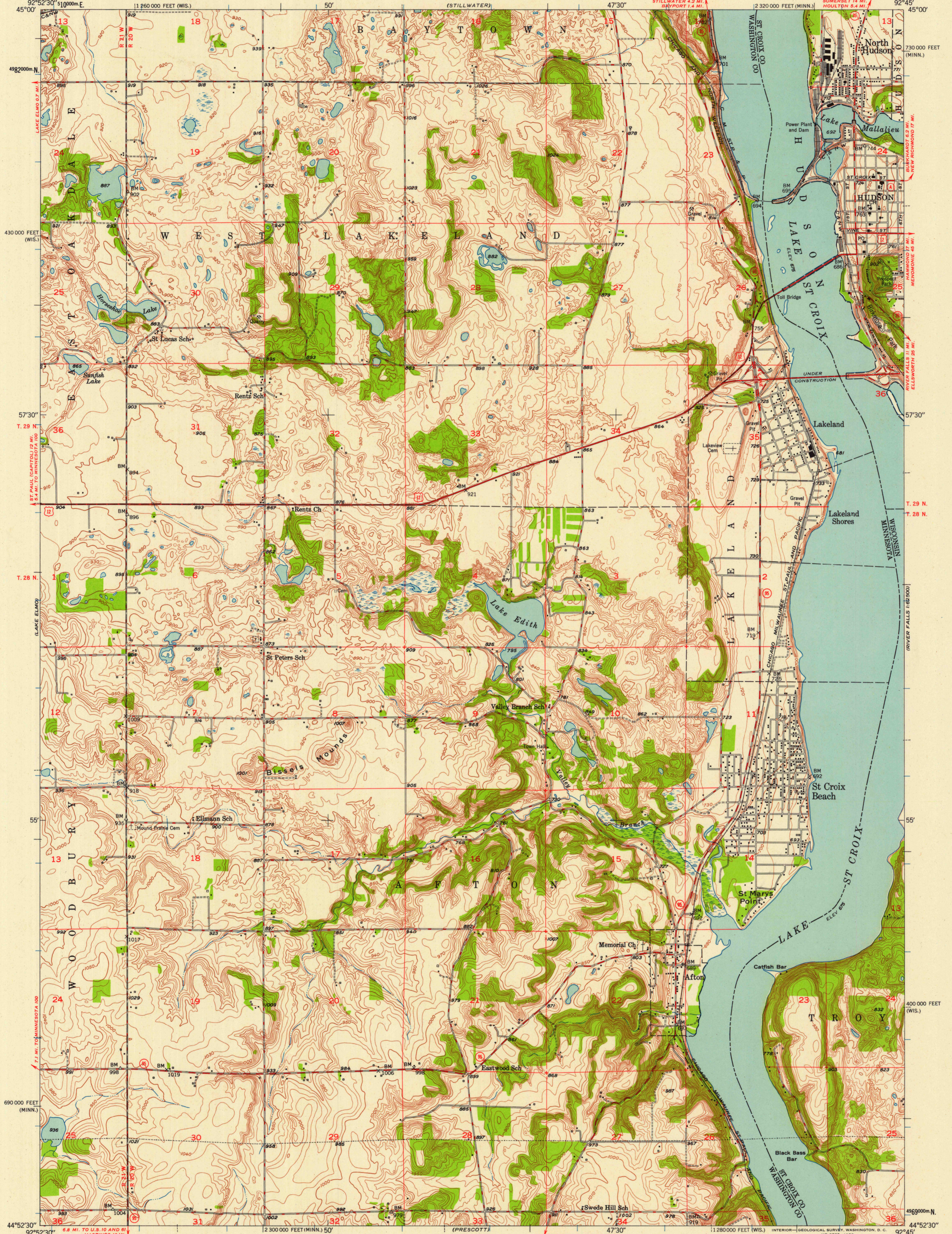
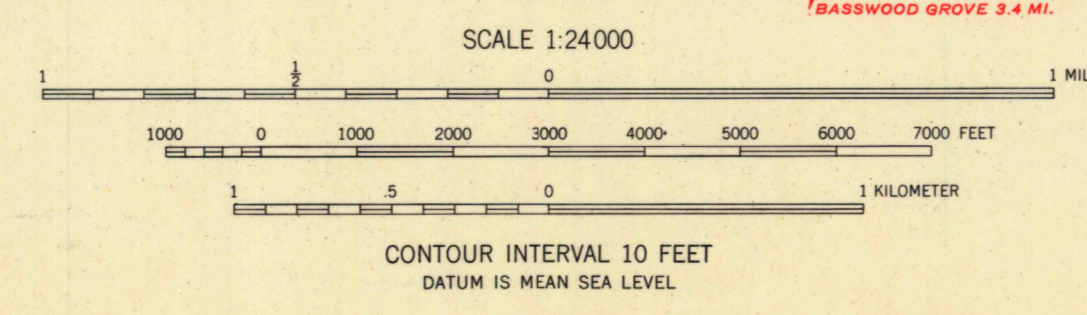


(NEW RICHMOND)
1:62,500



Mapped, edited, and published by the Geological Survey
Control by Corps of Engineers, U.S. Army,
USGS, and USC&GS
Topography from aerial photographs by multiplex methods
Aerial photographs taken 1947. Field check 1949
Polyconic projection. 1927 North American datum
10,000-foot grids based on Minnesota coordinate system, south zone
and Wisconsin coordinate system, central zone
Red tint indicates area in which only
landmark buildings are shown
1000-meter Universal Transverse Mercator grid ticks,
zone 15, shown in blue



USGS
Historical File
Topographic Division

ROAD CLASSIFICATION
HARD-SURFACE ALL WEATHER ROADS
Heavy-duty ————
Medium-duty ————
Loose-surface, graded, or narrow hard-surface
U. S. Route
DRY WEATHER ROADS
Improved dirt
Unimproved dirt
State Route

U.S.G.S.
FILE COPY
TOPOGRAPHIC DIVISION

U.S.G.S.
HUDSON, MINN.-WIS.
NE/4 HUDSON 15' QUADRANGLE
N4452.5—W9245.7/7.5
1949

THIS MAP COMPLIES WITH NATIONAL MAP ACCURACY STANDARDS
FOR SALE BY U. S. GEOLOGICAL SURVEY, WASHINGTON 25, D. C.
A FOLDER DESCRIBING TOPOGRAPHIC MAPS AND SYMBOLS IS AVAILABLE ON REQUEST

MAR 25 1958
1895