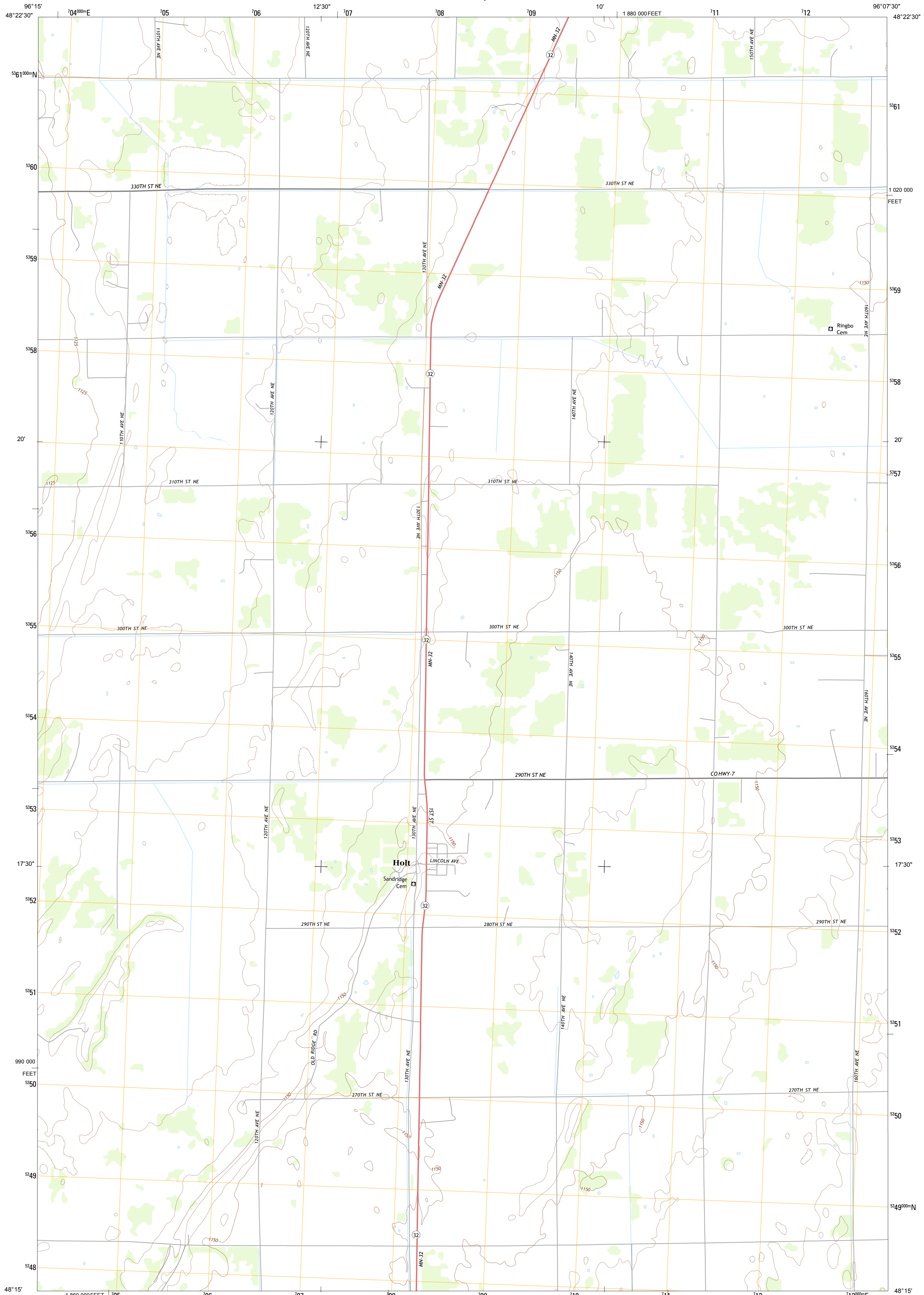




U.S. DEPARTMENT OF THE INTERIOR  
U. S. GEOLOGICAL SURVEY

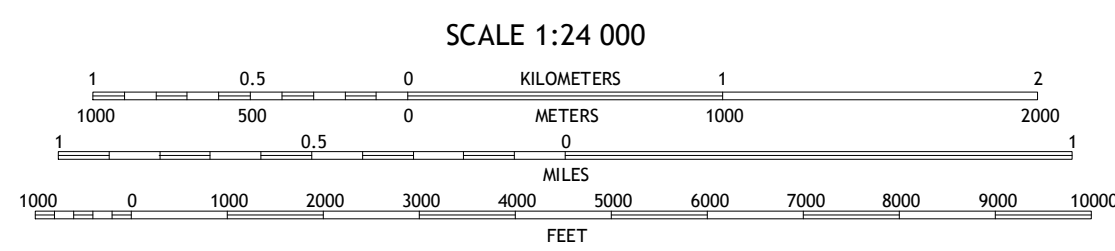
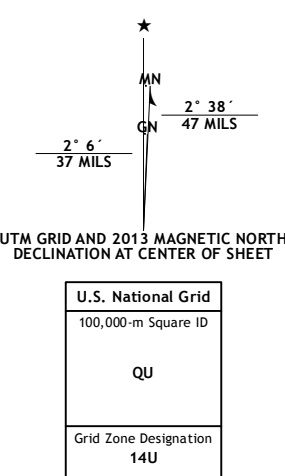


HOLT QUADRANGLE  
MINNESOTA-MARSHALL CO.  
7.5-MINUTE SERIES

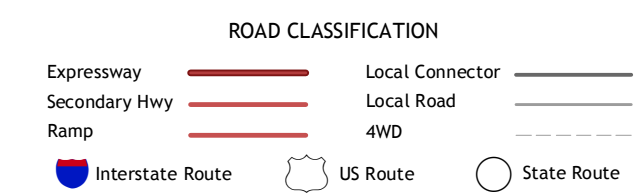


Produced by the United States Geological Survey  
North American Datum of 1983 (NAD83)  
World Geodetic System of 1984 (WGS84), Projection and  
1 000-meter grid: Universal Transverse Mercator, Zone 14U  
10 000-foot ticks: Minnesota Coordinate System of 1983 (north zone)

Imagery.....NAIP, May 2010  
Roads.....©2006-2012 TomTom  
Names.....GNIS, 2013  
Hydrography.....National Hydrography Dataset, 2010  
Contours.....National Elevation Dataset, 2012  
Boundaries.....Census, IBWC, IBC, USGS, 1972 - 2012



CONTOUR INTERVAL 5 FEET  
NORTH AMERICAN VERTICAL DATUM OF 1988  
This map was produced to conform with the  
National Geospatial Program US Topo Product Standard, 2011.  
A metadata file associated with this product is draft version 0.6.11



QUADRANGLE LOCATION

Nelson Slough	Middle River	Middle River NE
Newfolds	Holt	Middle River SE
Rosewood	Thief River Falls NW	Thief River Falls NE

ADJOINING 7.5 QUADRANGLES

HOLT, MN  
2013