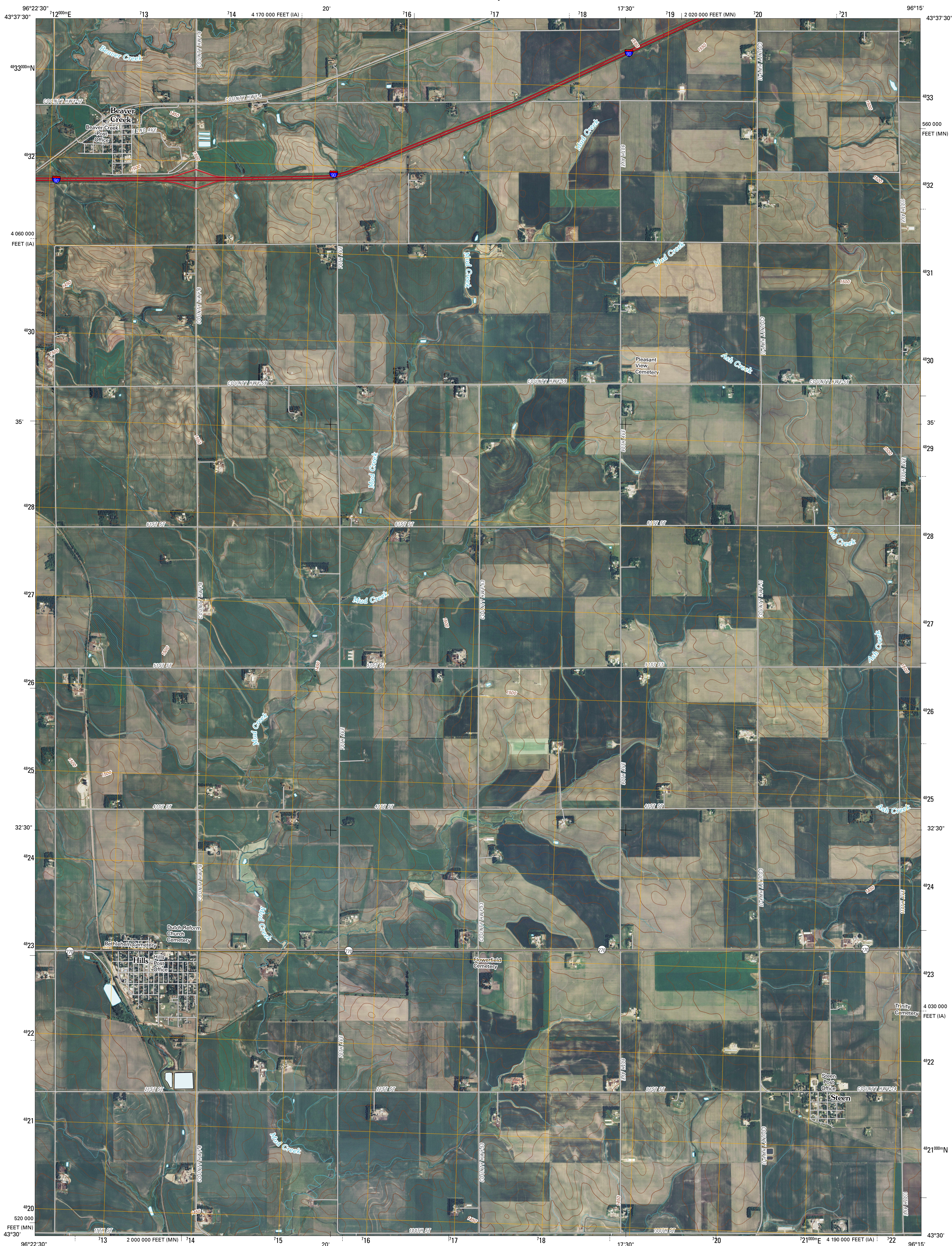




U.S. DEPARTMENT OF THE INTERIOR
U. S. GEOLOGICAL SURVEY

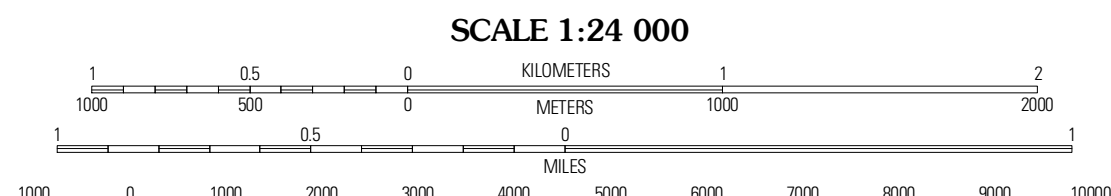
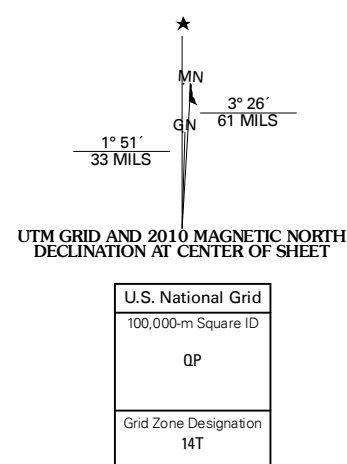


HILLS QUADRANGLE
MINNESOTA-IOWA
7.5-MINUTE SERIES

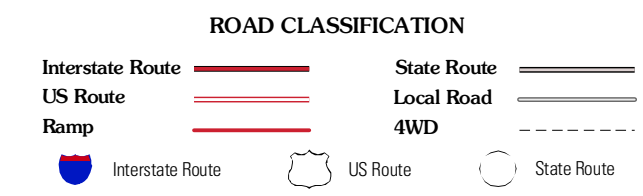
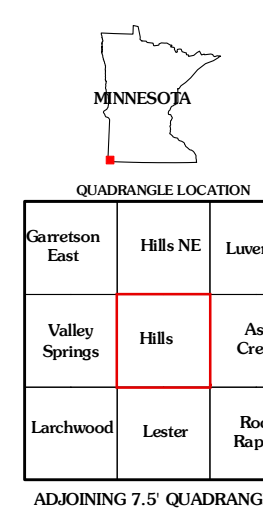


Produced by the United States Geological Survey
North American Datum of 1983 (NAD83)
World Geodetic System of 1984 (WGS84). Projection and
1 000-meter grid: Universal Transverse Mercator, Zone 14T
10 000-foot ticks: Minnesota Coordinate System of 1983
(south zone) and Iowa Coordinate System of 1983
(north zone)

Imagery: NAIP, June 2009 - July 2009
Roads: 2006-2010 Tele Atlas
Names: GNIS, 2008
Hydrography: National Hydrography Dataset, 2009
Contours: National Elevation Dataset, 2006



CONTOUR INTERVAL 10 FEET
NORTH AMERICAN VERTICAL DATUM OF 1988
This map was produced to conform with version 0.5.10 of the
draft USGS Standards for 7.5-Minute Quadrangle Maps.
A metadata file associated with this product is draft version 0.5.11



HILLS, MN-IA
2010

QUADRANGLE LOCATION		
Carleton East	Hills NE	Luverne
Valley Springs	Hills	Ash Creek
Larchwood	Lester	Rock Rapids

ADJOINING 7.5' QUADRANGLES