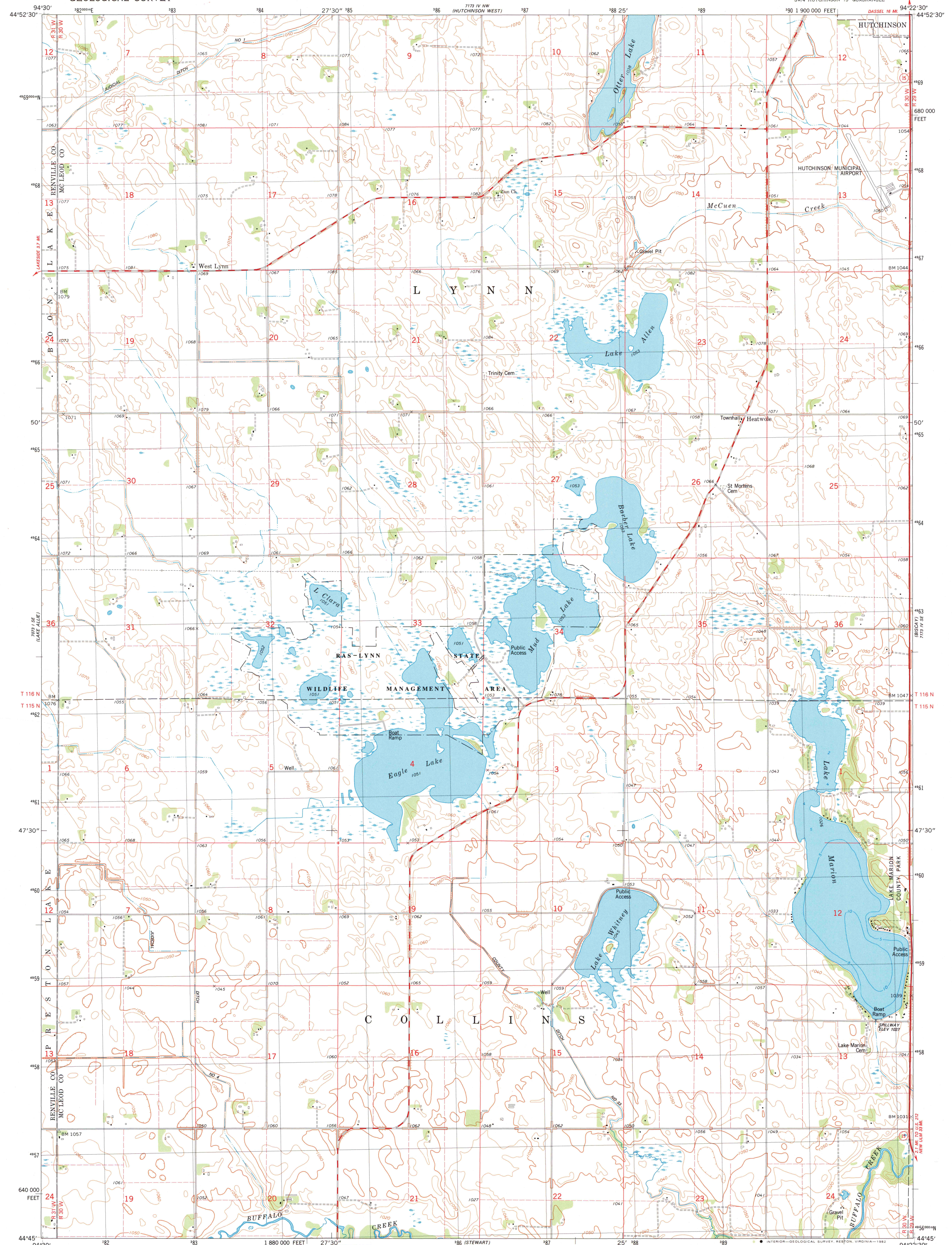


UNITED STATES  
DEPARTMENT OF THE INTERIOR  
GEOLOGICAL SURVEY

HEATWOLE QUADRANGLE  
MINNESOTA  
7.5 MINUTE SERIES (TOPOGRAPHIC)  
SW 1/4 HUTCHINSON 15' QUADRANGLE



Mapped, edited, and published by the Geological Survey

Control by USGS and NOS/NOAA

Topography by photogrammetric methods from aerial photographs taken 1975. Field checked 1977. Map edited 1982

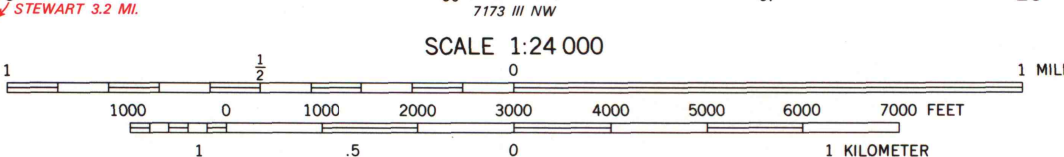
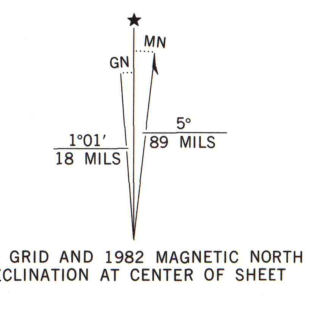
Hydrography compiled from information furnished by Minnesota Department of Natural Resources

Projection and 10,000-foot grid ticks: Minnesota coordinate system, south zone (Lambert conformal conic)

1000-meter Universal Transverse Mercator grid, zone 15 1927 North American Datum

To place on the predicted North American Datum 1983 move the projection lines 7 meters north and 20 meters east as shown by dashed corner ticks

There may be private inholdings within the boundaries of the National or State Reservations shown on this map



CONTOUR INTERVAL 10 FEET  
NATIONAL GEODETIC VERTICAL DATUM OF 1929



ROAD CLASSIFICATION

Primary highway, hard surface	Light-duty road, hard or improved surface
Secondary highway, hard surface	Unimproved road
Interstate Route	U. S. Route
	State Route

HEATWOLE, MINN.  
SW 1/4 HUTCHINSON 15' QUADRANGLE  
N4445-W9422.5/7.5

1982  
DMA 7173 IV SW-SERIES V872

MAP AND AIR PHOTO LIBRARY

JAN 2 0 1983

University of Wisconsin  
Madison