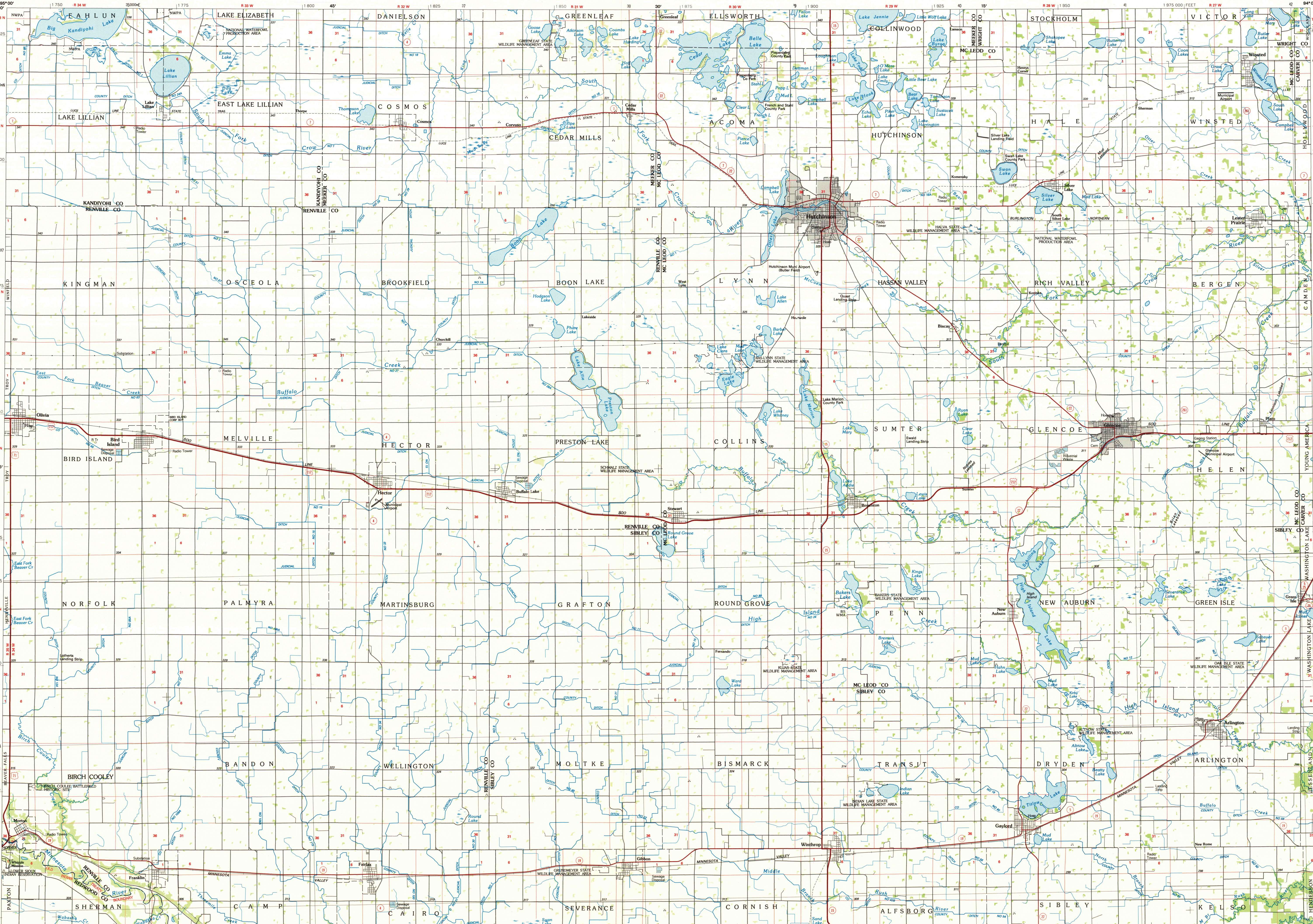


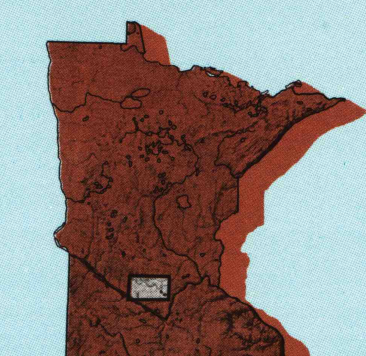
GLENCOE, MINNESOTA

30 X 60 MINUTE SERIES (PLANIMETRIC)



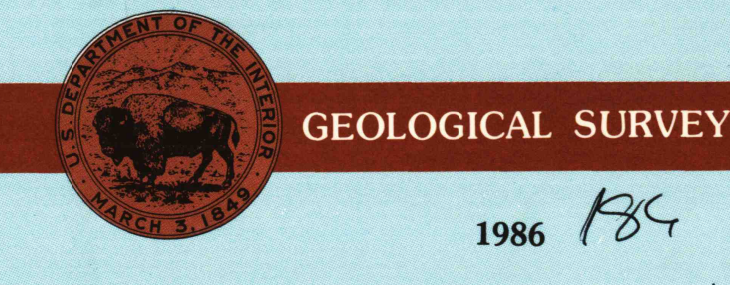
Glencoe MINNESOTA

1:100 000-scale planimetric map



30 X 60 MINUTE QUADRANGLE SHOWING

- Elevations in meters
- Highways, roads and other manmade structures
- Water features
- Woodland areas
- Geographic names



Produced by the United States Geological Survey
 Compiled from USGS 1:24 000-scale topographic maps dated 1980 and 1984. Planimetry revised from aerial photographs taken 1984 and other source data. Revised information not field checked. Map edited 1986.
 Projection and 10 000-meter grid, zone 15. Universal Transverse Mercator
 25 000-foot grid ticks based on Minnesota coordinate system, south zone
 1927 North American Datum
 To place on the predicted North American Datum 1983, move the projection lines 7 meters north and 21 meters east
 There may be private inholdings within the boundaries of the National or State reservations shown on this map

NATIONAL GEODETIC VERTICAL DATUM OF 1929 ELEVATIONS SHOWN TO THE NEAREST METER

THIS MAP COMPLIES WITH NATIONAL MAP ACCURACY STANDARDS

Meters	Feet
1	3.2808
2	6.5617
3	9.8425
4	13.1234
5	16.4042
6	19.6850
7	22.9659
8	26.2467
9	29.5276
10	32.8084

To convert meters to feet multiply by 3.2808
 To convert feet to meters multiply by 0.3048

DECLINATION DIAGRAM	ADJOINING MAPS
1 2 3 4 5 6 7 8	1 Willmar 2 Litchfield 3 Anoka 4 Montevideo 5 Saint Paul 6 Tracy 7 New Ulm 8 Faribault

UTM grid convergence (GN and 1983 magnetic declination (MM) at center of map. Diagram is approximate.

FOR SALE BY U.S. GEOLOGICAL SURVEY
 RESTON, VIRGINIA 22092
 AUG 25 1986
 REC'D FILE COPY

Topographic Map Symbols

- Primary highway, hard surface
- Secondary highway, hard surface
- Light duty road, principal street, hard or improved surface
- Other road or street, trail
- Route marker: Interstate, U.S. State
- Railroad: standard gauge, narrow gauge
- Bridge: overpass, underpass
- Tunnel: road, railroad
- Built up area, locality, elevation
- Airport: landing field, landing strip
- National boundary
- State boundary
- County boundary
- National or State reservation boundary
- Land grant boundary
- U.S. public lands survey: range, township, section
- Range, township, section line: protracted
- Power transmission line: pipeline
- Dam: dam with lock
- Cemetery: building
- Well: water well, spring
- Mine shaft: salt or caving, mine, quarry, gravel pit
- Campground, picnic area: U.S. location monument
- Ruins: cliff dwelling
- Distorted surface: strip mine, lava, sand
- Contours: index, intermediate, supplementary
- Bathymetric contours: index, intermediate
- Stream: lake, perennial, intermittent
- Radioisotope and small, lake, large and small
- Area to be submerged; marsh, swamp
- Land subject to controlled inundation; woodland
- Soak; mangrove
- Orchard; vineyard

A pamphlet describing topographic maps is available on request



GLENCOE, MINNESOTA 44094-E1-PL-100 1986