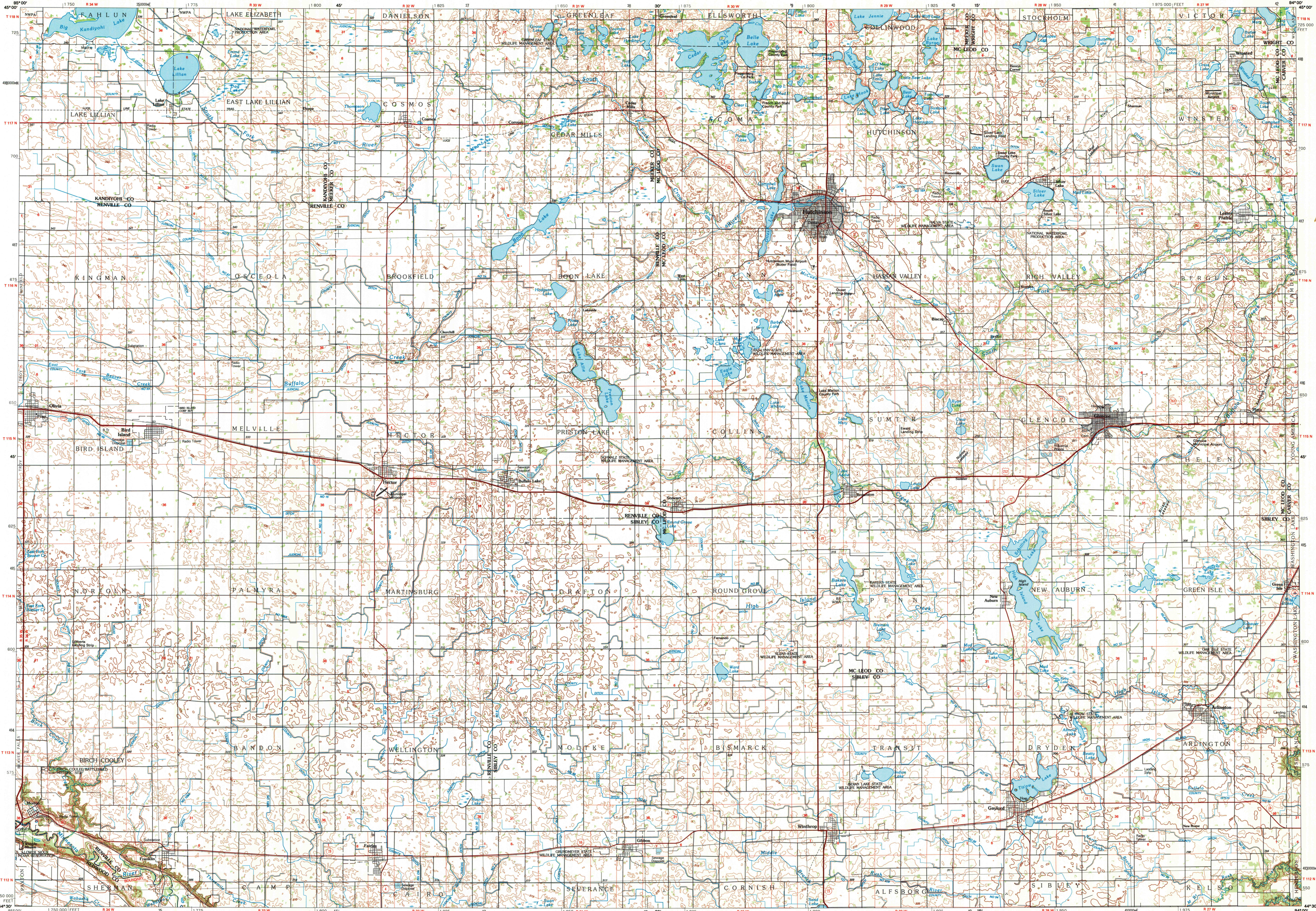


GLENCOE, MINNESOTA

30 X 60 MINUTE SERIES (TOPOGRAPHIC)



Glencoe MINNESOTA

1:100 000-scale metric topographic map

30 X 60 MINUTE QUADRANGLE SHOWING

- Contours and elevations in meters
- Highways, roads and other manmade structures
- Water features
- Woodland areas
- Geographic names

GEOLOGICAL SURVEY

1986

Produced by the United States Geological Survey
 Compiled from USGS 1:24 000-scale topographic maps dated 1964-1983. Planimetry revised from aerial photographs taken 1984 and other source data. Revised information not field checked. Map edited 1986.

Projection and 10 000-meter grid, zone 15.
 25 000-foot grid ticks based on Minnesota coordinate system, south zone
 1927 North American Datum
 To place on the predicted North American Datum 1983, move the projection lines 7 meters north and 21 meters east
 There may be private inholdings within the boundaries of the National or State reservations shown on this map

CONTOUR INTERVAL 5 METERS
 NATIONAL GEODETIC VERTICAL DATUM OF 1929
 ELEVATIONS SHOWN TO THE NEAREST METER

THIS MAP COMPLIES WITH NATIONAL MAP ACCURACY STANDARDS

CONVERSION TABLE		DECLINATION DIAGRAM	ADJOINING MAPS
Meters	Feet		1 Wilmar
1	3.2808		2 Litchfield
2	6.5617		3 Anoka
3	9.8425		4 Montevideo
4	13.1234		5 Saint Paul
5	16.4042		6 Tracy
6	19.6850		7 New Ulm
7	22.9659		8 Faribault
8	26.2467		
9	29.5275		
10	32.8084		

To convert meters to feet multiply by 3.2808
 To convert feet to meters multiply by 0.3048

UTM grid convergence (GN) and 1983 magnetic declination (MD) at center of map
 Diagram is approximate

FOR SALE BY U.S. GEOLOGICAL SURVEY
 DENVER, COLORADO 80225, OR RESTON, VIRGINIA 22092

Topographic Map Symbols

Primary highway, hard surface	—
Secondary highway, hard surface	—
Light duty road, principal street, hard or improved surface	—
Other road or street, wall	—
Route marker: interstate; U.S.; State	—
Railroad: standard gage; narrow gage	—
Bridge: overpass; underpass	—
Tunnel: road; railroad	—
Built up area, locality, elevation	—
Apron: landing field; landing strip	—
National boundary	—
State boundary	—
County boundary	—
National or State reservation boundary	—
Land grant boundary	—
U.S. public lands survey: range, township, section	—
Range ownership; section line; protracted	—
Power transmission line; pipeline	—
Dam: dam with lock	—
Cemetery; building	—
Windmill; water well; spring	—
Mine shaft; adit or cave; mine, quarry; gravel pit	—
Campground; picnic area; U.S. location monument	—
Rocks, cliff dwellings	—
Distorted surface: strip mine, lava; sand	—
Contours: index; intermediate; supplementary	—
Bathymetric contours: index; intermediate	—
Stream, lake: perennial; intermittent	—
Rapids, large and small; falls, large and small	—
Area to be submerged; marsh, swamp	—
Land subject to controlled inundation; woodland	—
Scrub; mangrove	—
Orchard; vineyard	—

A pamphlet describing topographic maps is available on request

3006-7/8-03

SET

U.S. Regional
 Depository Copy
 DO NOT DISCARD
 ARTHUR H. ROBINSON MAP LIBRARY
 University of Wisconsin-Madison