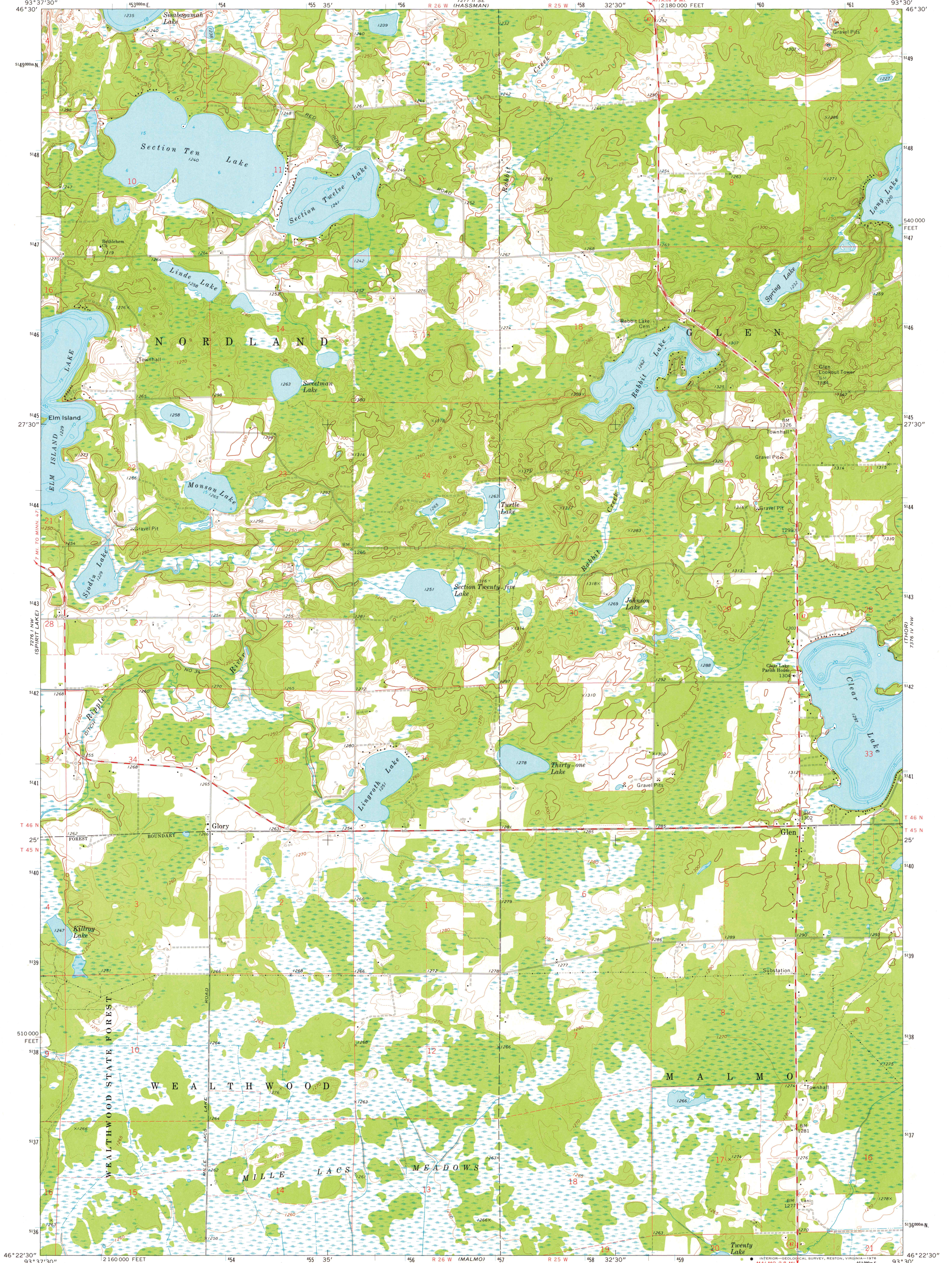


7277 II SW  
AITKIN

7277 II SW  
WIMBERLY



Mapped, edited, and published by the Geological Survey

Control by USGS and NOS/NOAA

Topography by photogrammetric methods from aerial photographs taken 1973. Field checked 1973

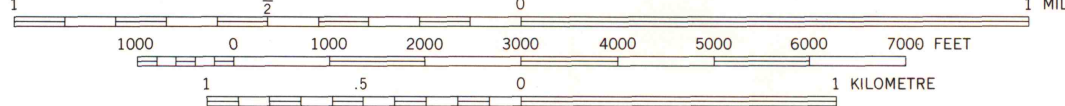
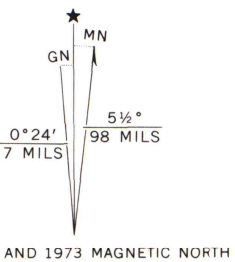
Hydrography compiled from information furnished by Minnesota Department of Natural Resources

Projection and 10,000-foot grid ticks: Minnesota coordinate system, central zone (Lambert conformal conic)

1000-metre Transverse Mercator grid ticks, zone 15, shown in blue. 1927 North American datum

Fine red dashed lines indicate selected fence and field lines where generally visible on aerial photographs

This information is uncheckered



CONTOUR INTERVAL 10 FEET  
DOTTED LINES REPRESENT 5 FOOT CONTOURS  
NATIONAL GEODETIC VERTICAL DATUM OF 1929



MAP AND AIR PHOTO  
GLEN, MINN.  
NE/4 WEALTHWOOD 15' QUADRANGLE  
N4622.5-W9330/7.5

APR 24 1976

1973  
AMS 7276 I NE-SERIES V872

THIS MAP COMPLIES WITH NATIONAL MAP ACCURACY STANDARDS  
FOR SALE BY U. S. GEOLOGICAL SURVEY, RESTON, VIRGINIA 22092  
A FOLDER DESCRIBING TOPOGRAPHIC MAPS AND SYMBOLS IS AVAILABLE ON REQUEST