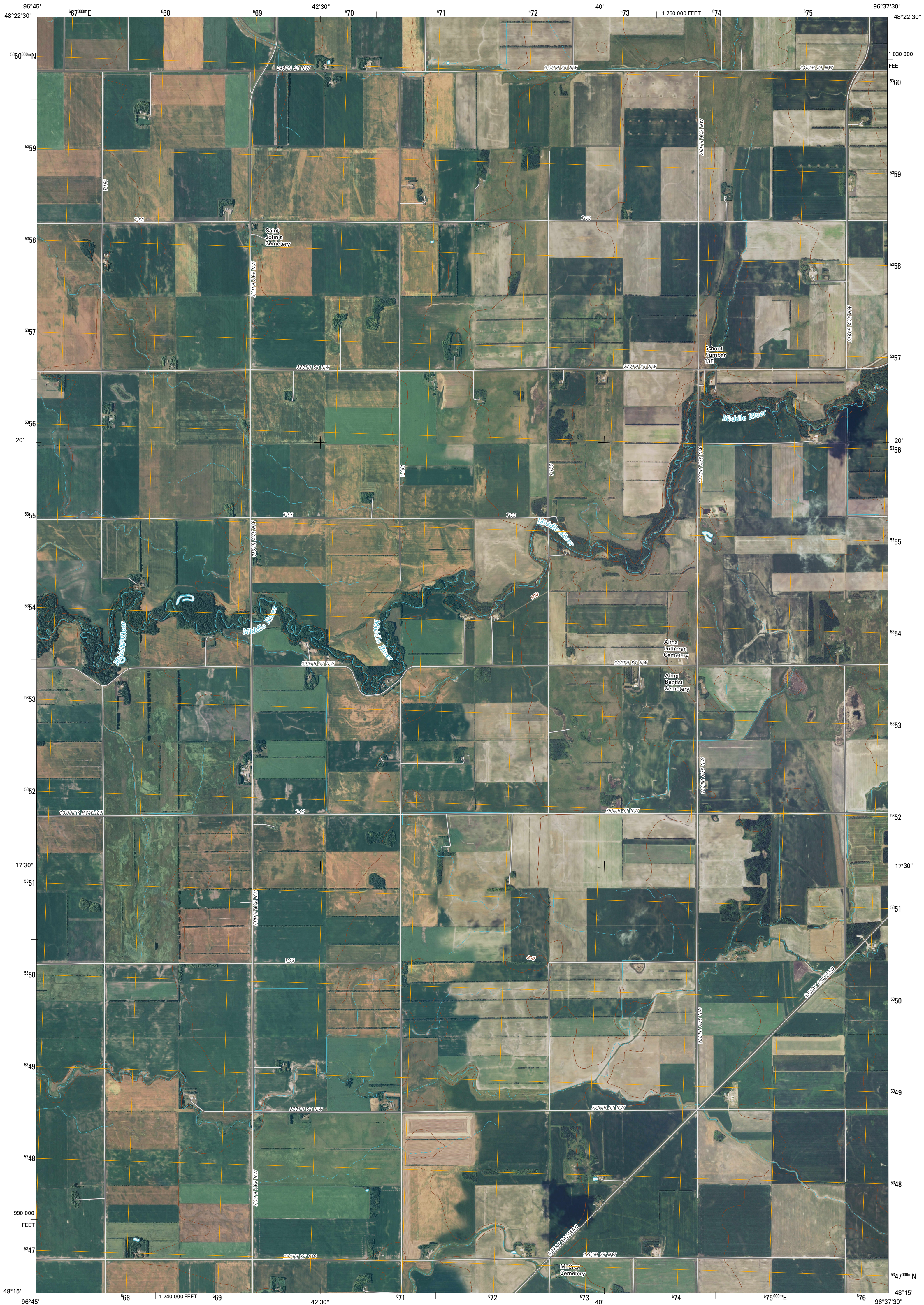




U.S. DEPARTMENT OF THE INTERIOR  
U. S. GEOLOGICAL SURVEY



FLORIAN SW QUADRANGLE  
MINNESOTA  
7.5-MINUTE SERIES



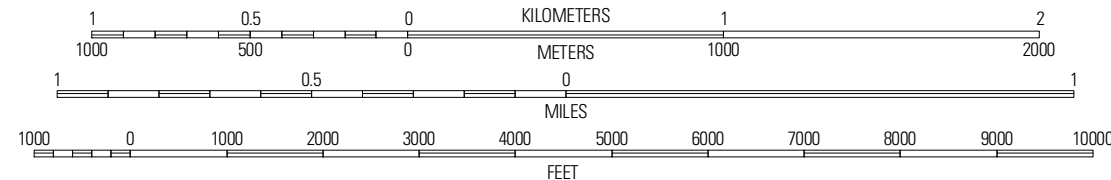
Produced by the United States Geological Survey  
North American Datum of 1983 (NAD83)  
World Geodetic System of 1984 (WGS84). Projection and  
1 000-meter grid: Universal Transverse Mercator, Zone 14U  
10 000-foot ticks: Minnesota Coordinate System of 1983  
(north zone)

Imagery.....NAIP, June 2009  
Roads.....62006-2010 Tele Atlas  
Names.....GNIS, 2008  
Hydrography.....National Hydrography Dataset, 2009  
Contours.....National Elevation Dataset, 1999

UTM GRID AND 2010 MAGNETIC NORTH  
DECLINATION AT CENTER OF SHEET

U.S. National Grid 100,000-m Square ID
PU
Grid Zone Designation 14U

SCALE 1:24 000



CONTOUR INTERVAL 10 FEET  
NORTH AMERICAN VERTICAL DATUM OF 1988

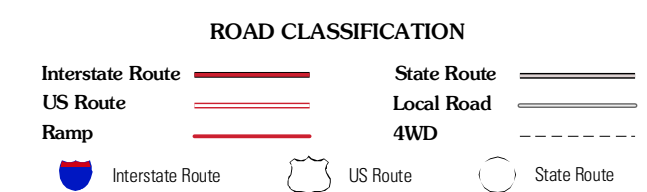
This map was produced to conform with version 0.5.10 of the  
draft USGS Standards for 7.5-Minute Quadrangle Maps.  
A metadata file associated with this product is draft version 0.5.11



QUADRANGLE LOCATION

Stephen East	Florian	Florian NE
Angle	Florian SW	Florian SE
Warren	Roan	Radian

ADJOINING 7.5' QUADRANGLES



FLORIAN SW, MN  
2010