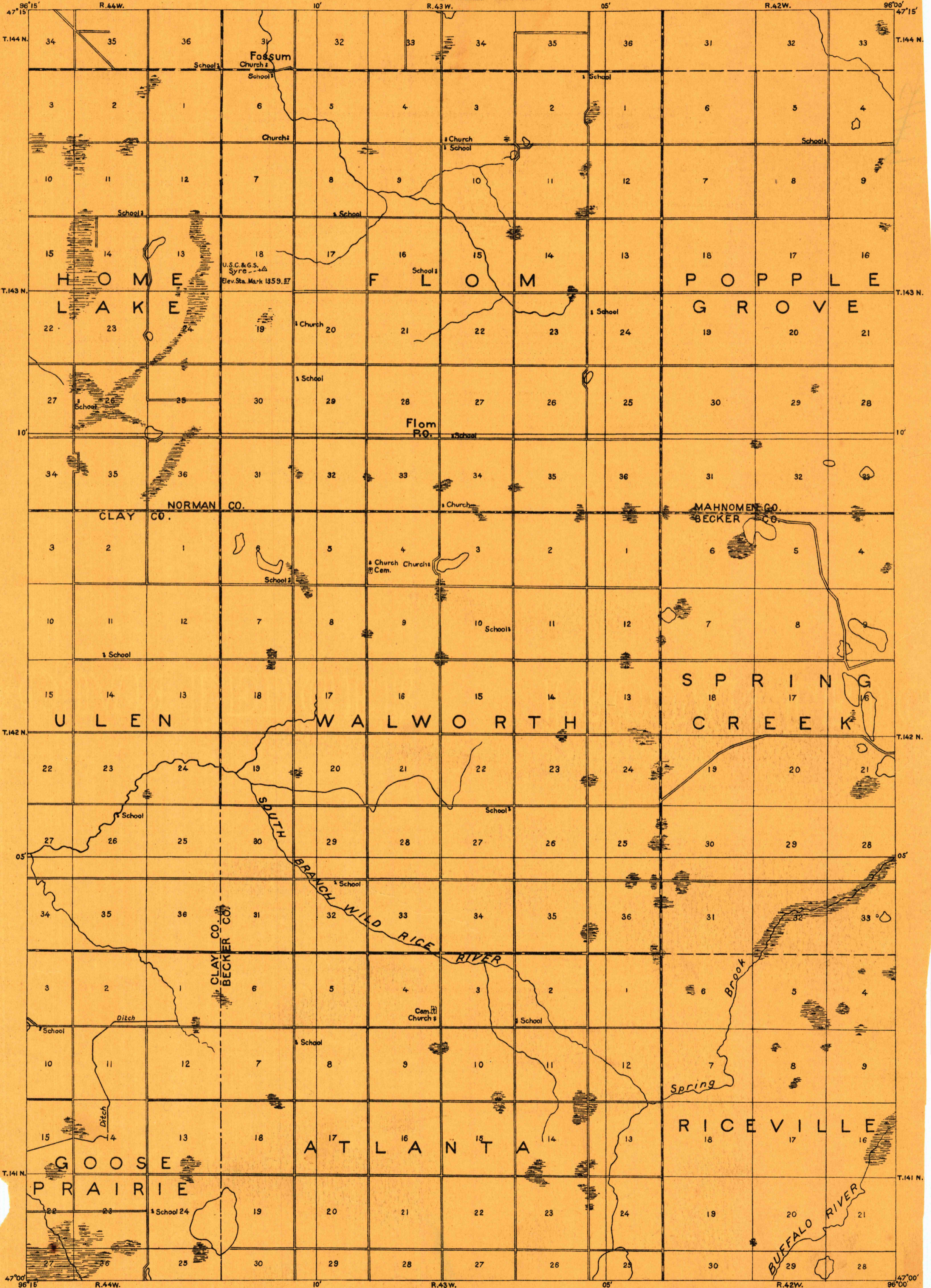
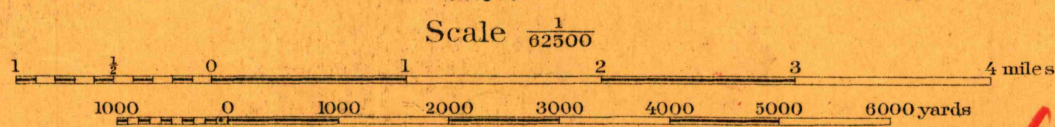


NOT MAPPED
PRIOR TO



Compiled in office of Department
Engineer, Central Department, 1918.

RETURN TO:
USGS NMD HISTORICAL MAP ARCHIVES

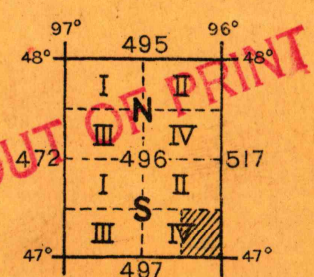


Datum is mean sea level

NOTE: OFFICERS USING THIS MAP WILL MARK HEREON CORRECTIONS AND ADDITIONS WHICH COME
TO THEIR ATTENTION AND MAIL DIRECT TO "THE CHIEF OF ENGINEERS, WASHINGTON, D. C."

Photolith. & printed at U.S. Lake Survey Office, Detroit, Mich.

**FLOM
MINN**
OUT OF PRINT



TITLE NORTH
MAGNETIC NORTH