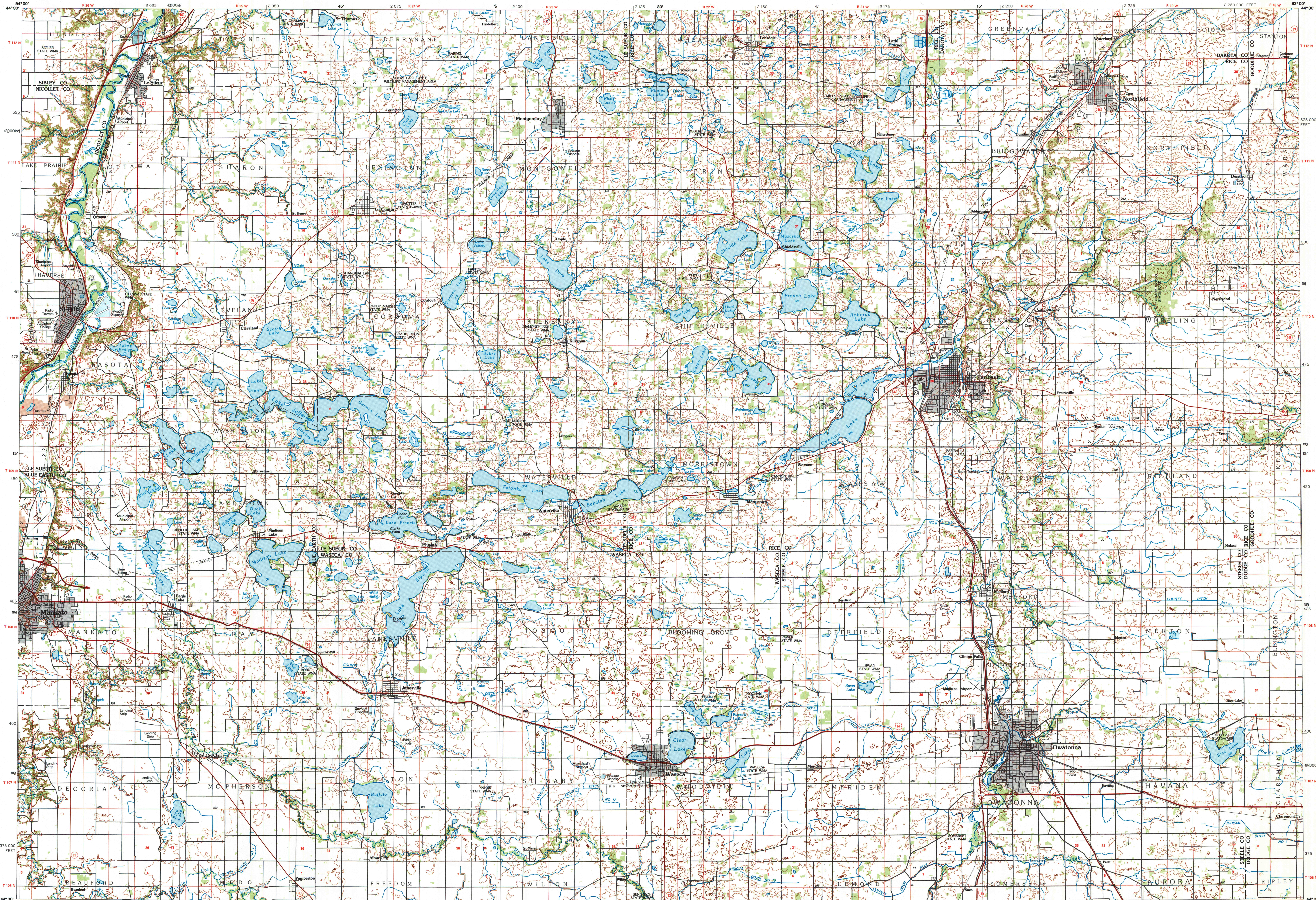


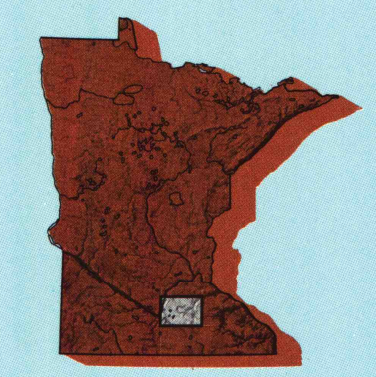
FARIBAUT, MINNESOTA

30 X 60 MINUTE SERIES (TOPOGRAPHIC)



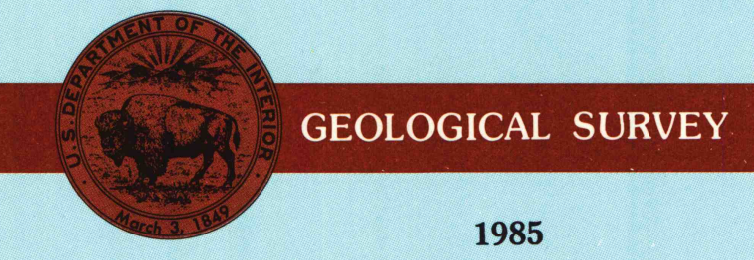
Faribault MINNESOTA

1:100 000-scale metric topographic map



30 X 60 MINUTE QUADRANGLE SHOWING

- Contours and elevations in meters
- Highways, roads and other manmade structures
- Water features
- Woodland areas
- Geographic names



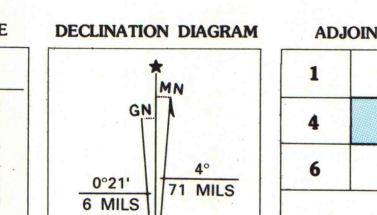
Produced by the United States Geological Survey  
 Compiled from USGS 1:24 000-scale topographic maps dated 1960-1979. Planimetry revised from aerial photographs taken 1984 and other source data. Revised information not field checked. Map edited 1985.  
 Projection and 10 000-meter grid, zone 15, Universal Transverse Mercator  
 25 000-foot grid ticks based on Minnesota coordinate system, south zone  
 1927 North American Datum  
 To place on the predicted North American Datum 1983, move the projection lines 6 meters north and 18 meters east  
 There may be private inholdings within the boundaries of the National or State reservations shown on this map

CONTOUR INTERVAL: 10 METERS  
 NATIONAL GEODESIC VERTICAL DATUM OF 1929  
 ELEVATIONS SHOWN TO THE NEAREST METER

THIS MAP COMPLIES WITH NATIONAL MAP ACCURACY STANDARDS

Meters	Feet
1	3.2808
2	6.5617
3	9.8425
4	13.1234
5	16.4042
6	19.6850
7	22.9659
8	26.2467
9	29.5276
10	32.8084

To convert meters to feet multiply by 3.2808  
 To convert feet to meters multiply by 0.3048



- ADJOINING MAPS
- |   |            |
|---|------------|
| 1 | Glencoe    |
| 2 | Saint Paul |
| 3 | Hastings   |
| 4 | New Ulm    |
| 5 | Rochester  |
| 6 | Farmington |
| 7 | Albert Lea |
| 8 | Austin     |

FOR SALE BY U.S. GEOLOGICAL SURVEY  
 DENVER, COLORADO 80225, OR RESTON, VIRGINIA 22092

Topographic Map Symbols

- Primary highway, hard surface
- Secondary highway, hard surface
- Light duty road, principal street, hard or improved surface
- Other road or street, trail
- Route marker: Interstate, U.S. State
- Railroad: standard gage, narrow gage
- Bridge: overpass, underpass
- Tunnel: road, railroad
- Built up area: locality, elevation
- Airport: landing field, landing strip
- National boundary
- State boundary
- County boundary
- National or State reservation boundary
- Land grant boundary
- U.S. public lands survey: range, township, section
- Range, township; section line: protracted
- Power transmission line: pipeline
- Dam; dam with lock
- Cemetery; building
- Windmill; water well; spring
- Mine shaft; adit or cave; mine, quarry; gravel pit
- Campground; picnic area; U.S. location monument
- Rail; off: dwelling
- Disturbed surface: strip mine, levee, sand
- Contours: index, intermediate, supplementary
- Bathymetric contours: index, intermediate
- Stream, lake: perennial, intermittent
- Rapids, large and small; falls, large and small
- Area to be submerged; marsh, swamp
- Land subject to controlled inundation; woodland
- Shrub; mangrove
- Orchard; vineyard

A pamphlet describing topographic maps is available on request  
 3006-96.03  
 SET 3