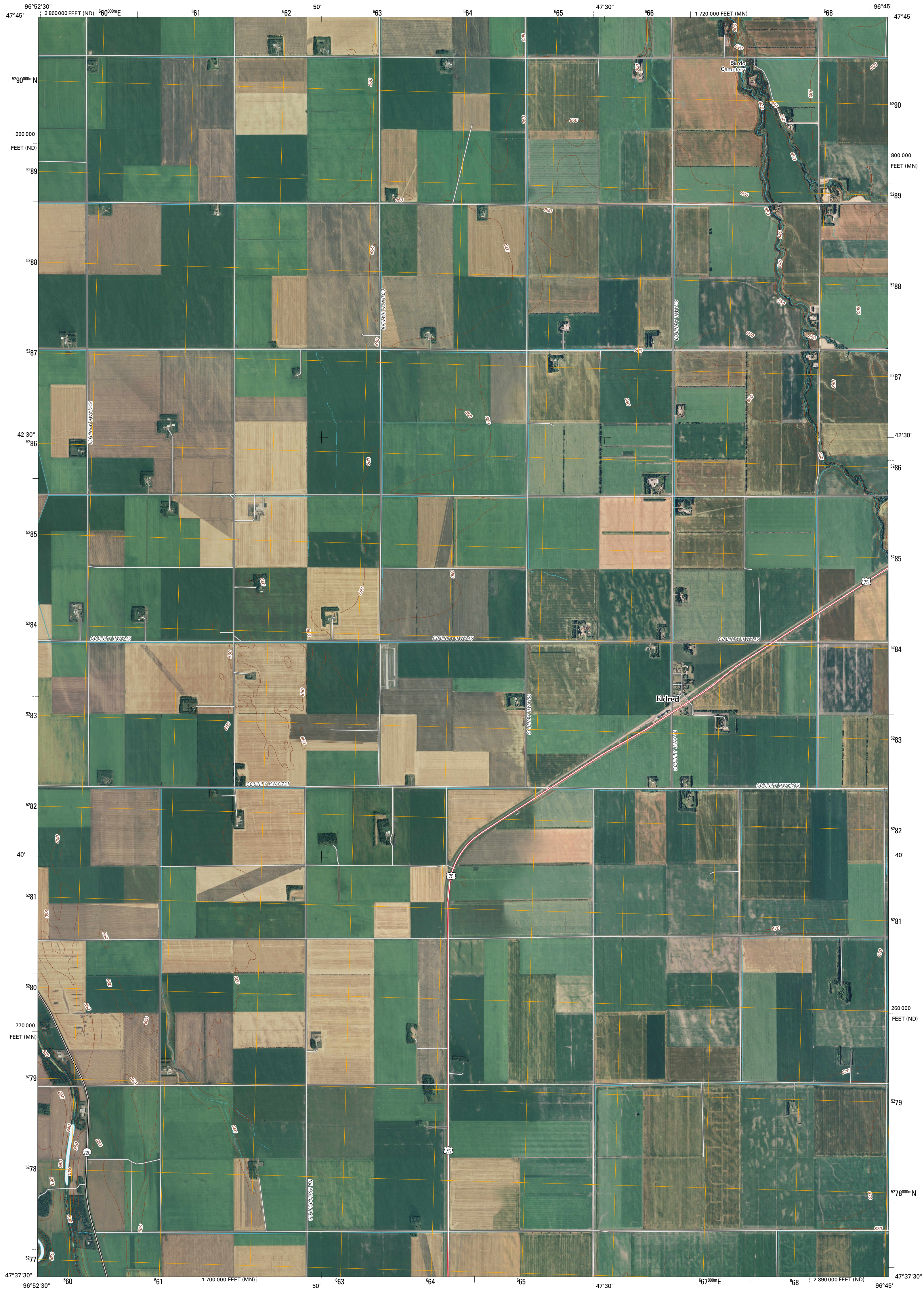




U.S. DEPARTMENT OF THE INTERIOR
U. S. GEOLOGICAL SURVEY

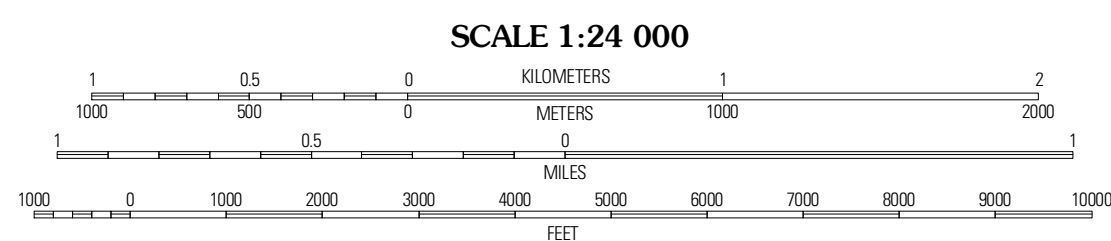
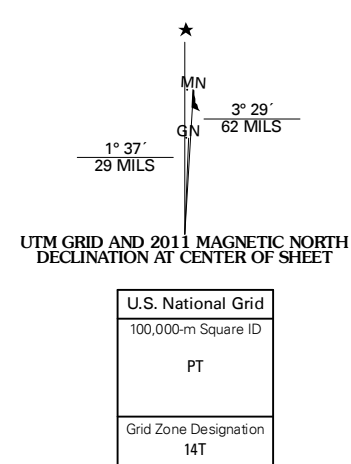


ELDRED QUADRANGLE
MINNESOTA-NORTH DAKOTA
7.5-MINUTE SERIES



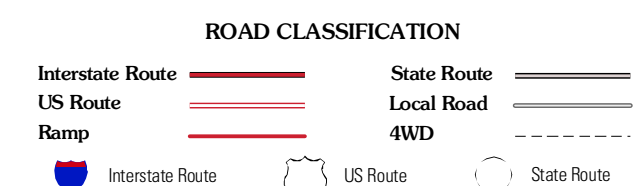
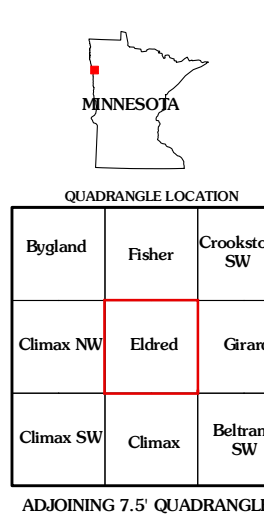
Produced by the United States Geological Survey
North American Datum of 1983 (NAD83)
World Geodetic System of 1984 (WGS84). Projection and
1 000-meter grid: Universal Transverse Mercator, Zone 14T
10 000-foot ticks: Minnesota Coordinate System of 1983
(north zone) and North Dakota Coordinate System of 1983
(north zone)

Imagery: N.A.I.P., June 2009
Roads: ©2006-2010 Tele Atlas
Names: G.N.S., 2009
Hydrography: National Hydrography Dataset, 2009
Contours: National Elevation Dataset, 2008



CONTOUR INTERVAL 10 FEET
NORTH AMERICAN VERTICAL DATUM OF 1988

This map was produced to conform with version 0.5.10 of the
draft USGS Standards for 7.5-Minute Quadrangle Maps.
A metadata file associated with this product is draft version 0.5.11



ELDRED, MN-ND
2011