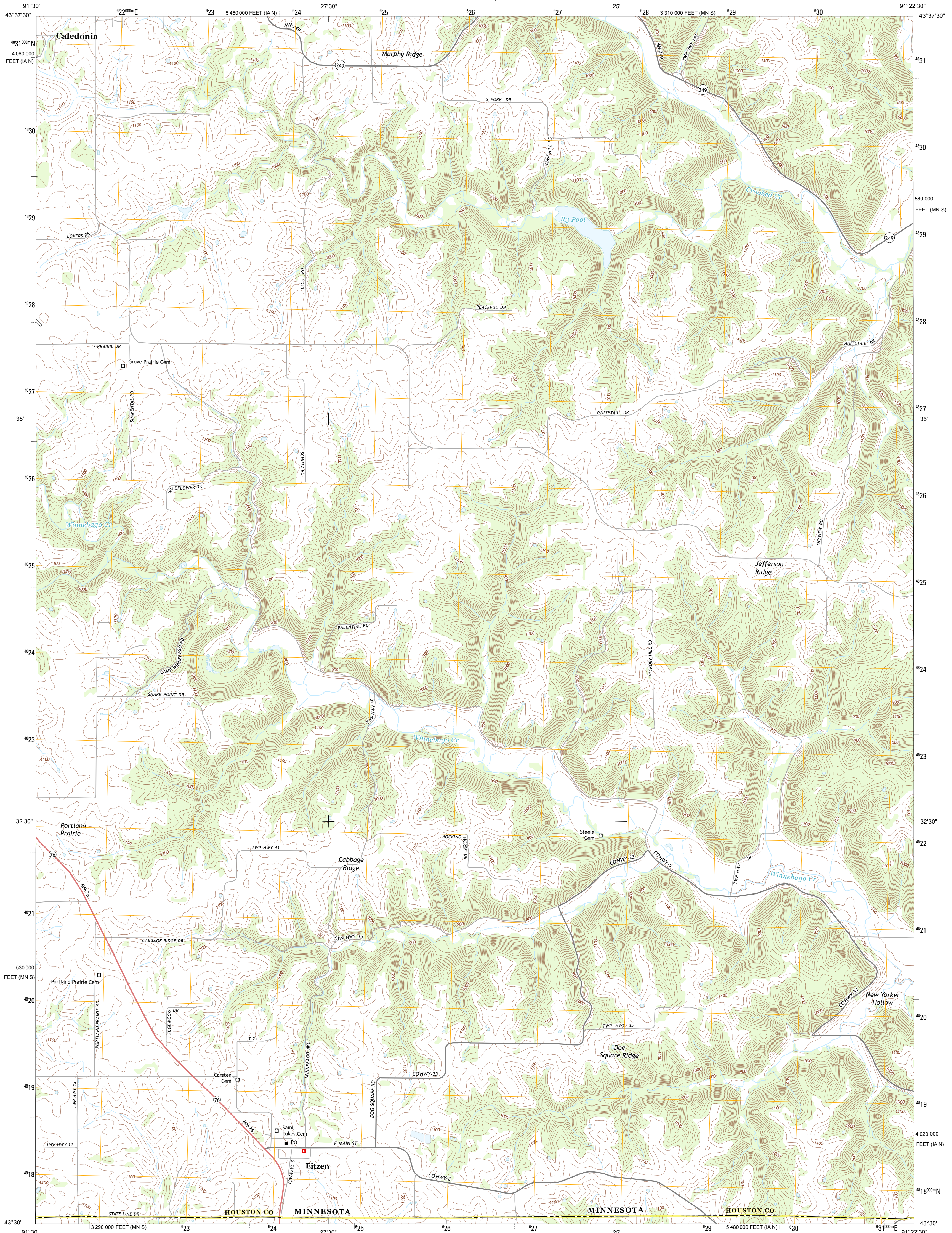




U.S. DEPARTMENT OF THE INTERIOR
U. S. GEOLOGICAL SURVEY

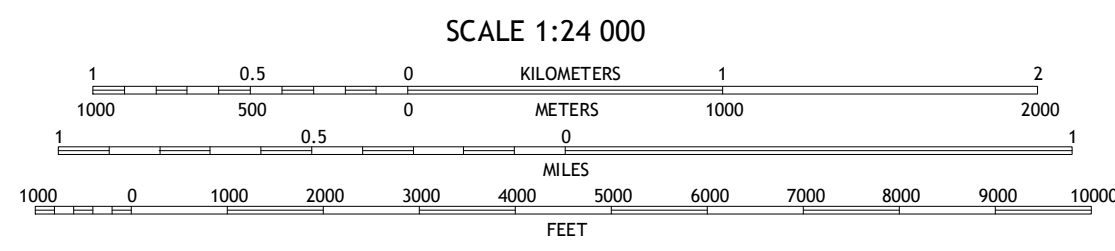
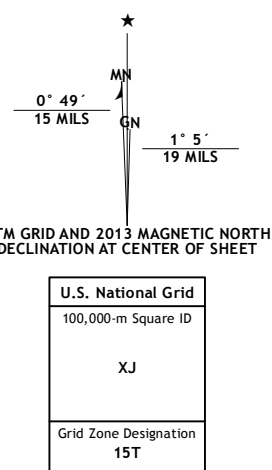


EITZEN QUADRANGLE
MINNESOTA-IOWA
7.5-MINUTE SERIES



Produced by the United States Geological Survey
North American Datum of 1983 (NAD83)
World Geodetic System of 1984 (WGS84). Projection and
1 000-meter grid: Universal Transverse Mercator, Zone 15T
10 000-foot ticks: Minnesota Coordinate System of 1983 (south
zone), Iowa Coordinate System of 1983 (north zone)

Imagery.....NAIP, June 2010 - July 2011
Roads.....©2006-2012, TomTom
Names.....GNS, 2013
Hydrography.....National Hydrography Dataset, 2010
Contours.....National Elevation Dataset, 1999
Boundaries.....Census, IBWC, IBC, USGS, 1972 - 2012



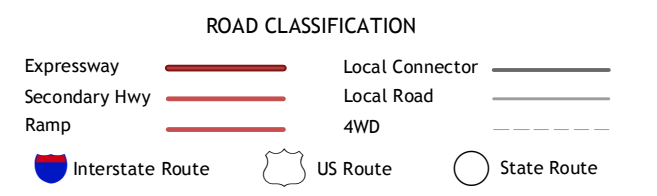
CONTOUR INTERVAL 20 FEET
NORTH AMERICAN VERTICAL DATUM OF 1988

This map was produced to conform with the
National Geospatial Program US Topo Product Standard, 2011.
A metadata file associated with this product is draft version 0.6.11



QUADRANGLE LOCATION

Sheldon	Caledonia	Brownsville
Wilmington	Eitzen	Reno
Dorchester	Waukon	New Albin



EITZEN, MN-IA
2013

ADJOINING 7.5 QUADRANGLES