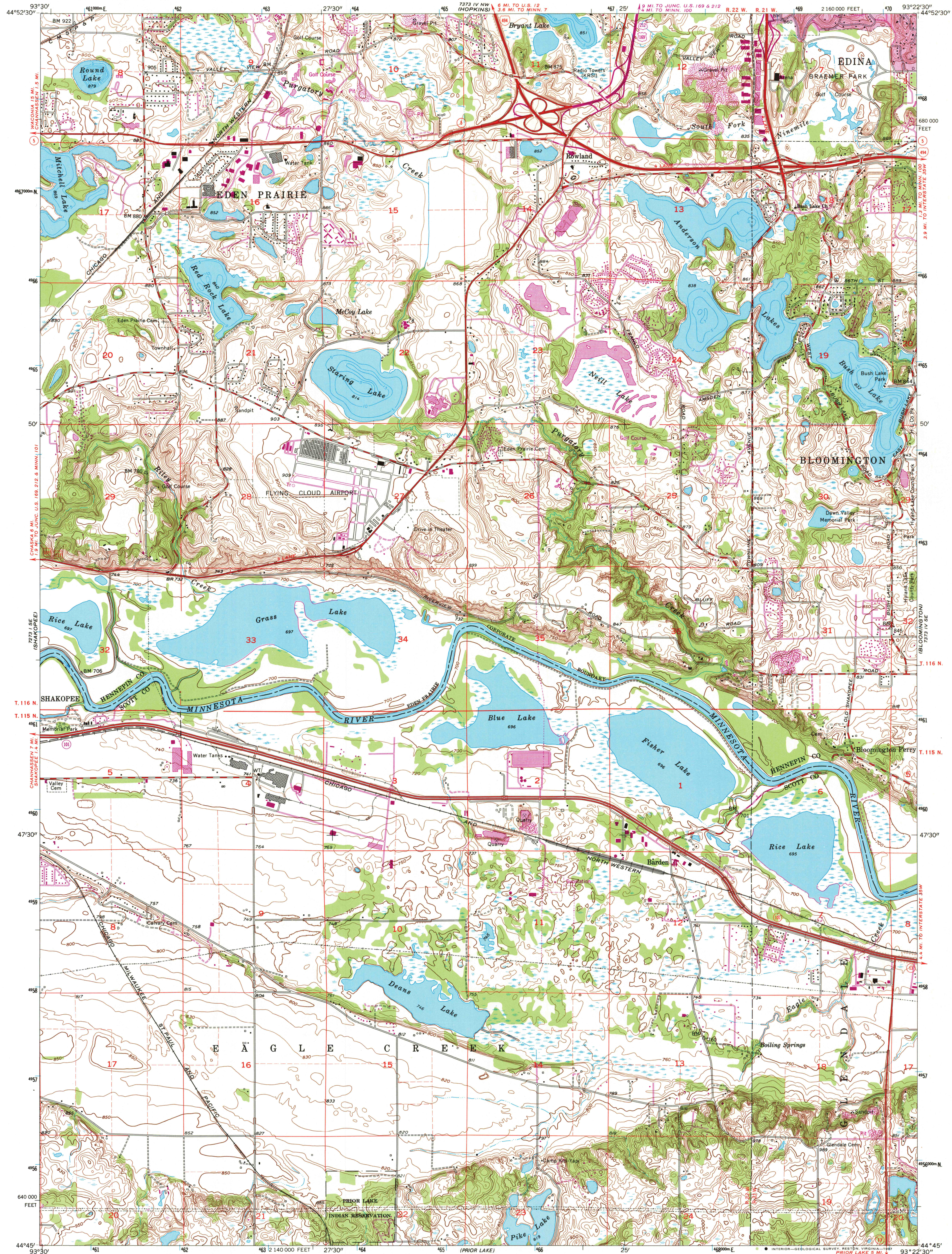


722 LINE
6225L SP9

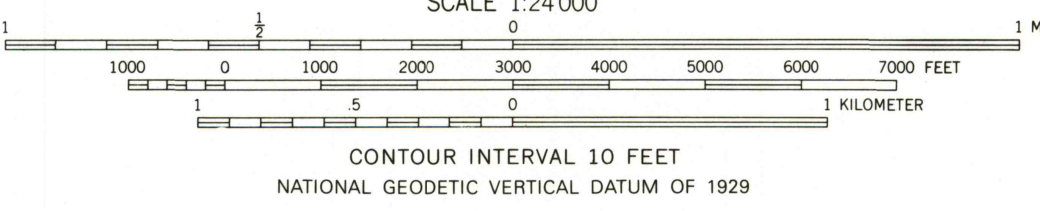
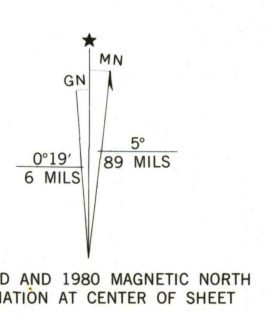
UNITED STATES
DEPARTMENT OF THE INTERIOR
GEOLOGICAL SURVEY

EDEN PRAIRIE QUADRANGLE
MINNESOTA
7.5 MINUTE SERIES (TOPOGRAPHIC)

722 IV NE
MINNEAPOLIS SOUTH



Mapped, edited, and published by the Geological Survey
Control by USGS, USC&GS
Topography by photogrammetric methods from aerial photographs taken 1947. Field checked 1954. Revised from aerial photographs taken 1966. Field checked 1967
Hydrography compiled from information furnished by Minnesota Department of Conservation
Polyconic projection. 1927 North American datum 10,000-foot grid based on Minnesota coordinate system, south zone 1000-meter Universal Transverse Mercator grid ticks, zone 15, shown in blue
To place on the predicted North American Datum 1983 move the projection lines 7 meters north and 18 meters east as shown by dashed corner ticks
There may be private inholdings within the boundaries of the National or State reservations shown on this map



THIS MAP COMPLIES WITH NATIONAL MAP ACCURACY STANDARDS
FOR SALE BY U. S. GEOLOGICAL SURVEY, DENVER, COLORADO 80225
OR RESTON, VIRGINIA 22092
A FOLDER DESCRIBING TOPOGRAPHIC MAPS AND SYMBOLS IS AVAILABLE ON REQUEST



ROAD CLASSIFICATION

Heavy-duty	Light-duty
Medium-duty	Unimproved dirt
Interstate Route	U. S. Route
	State Route

EDEN PRAIRIE, MINN.
44093-G4-TF-024
1967
PHOTOREVISED 1972 AND 1980
DMA 7373 IV SW-SERIES V872

Revisions shown in purple compiled from aerial photographs taken 1972 and 1977. Map edited 1980
This information not field checked
Purple tint indicates extension of urban area

USGS AND HISTORICAL MAP
APR 28 1987
RECD FILE COPY

JORDAN EAST 722 IV NE

CHICKADEE LAKE 722 IV NE