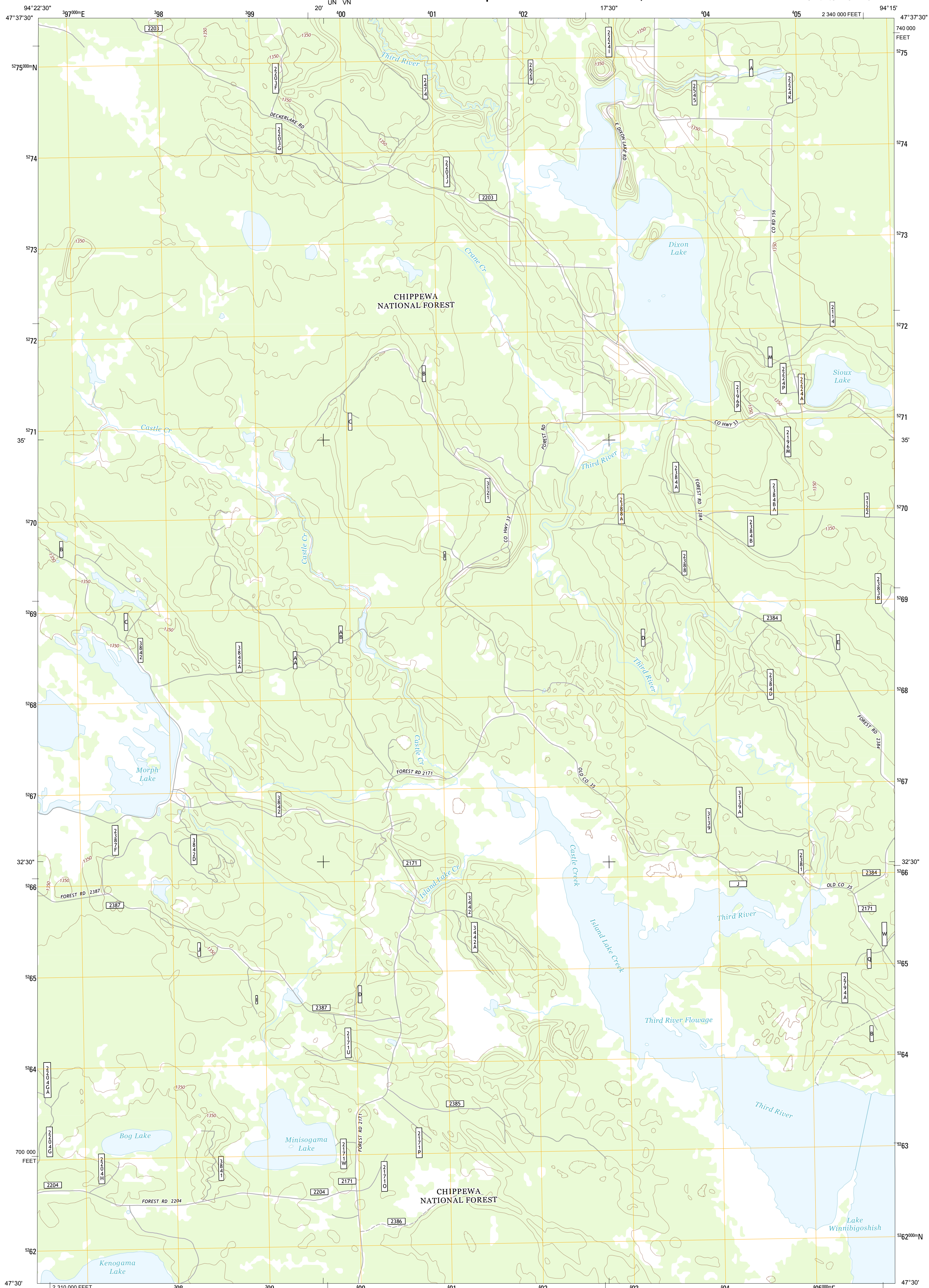




U.S. DEPARTMENT OF THE INTERIOR  
U. S. GEOLOGICAL SURVEY

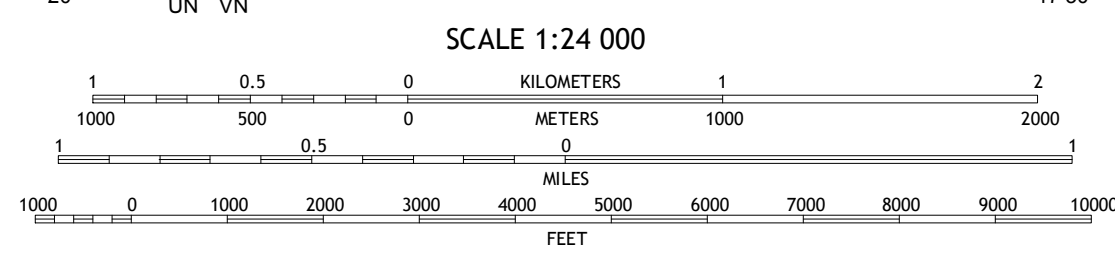
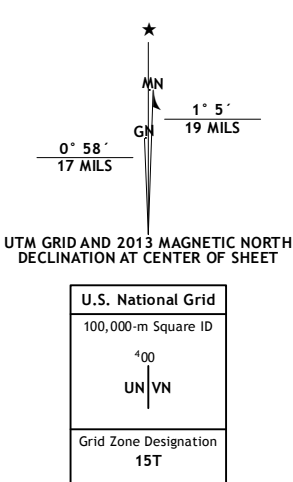


DIXON LAKE QUADRANGLE  
MINNESOTA-ITASCA CO.  
7.5-MINUTE SERIES



Produced by the United States Geological Survey  
North American Datum of 1983 (NAD83)  
World Geodetic System of 1984 (WGS84). Projection and  
1 000-meter grid: Universal Transverse Mercator, Zone 15T  
10 000-foot ticks: Minnesota Coordinate System of 1983 (north  
zone)

Imagery.....NAIP, July 2010  
Roads.....©2006-2012 TomTom  
Roads within US Forest Service Lands.....FS Topo Data  
with limited Forest Service updates, 2013  
Names.....GNIS, 2013  
Hydrography.....National Hydrography Dataset, 2010  
Contours.....National Elevation Dataset, 2006  
Boundaries.....Census, IBWC, IBC, USGS, 1972 - 2012



CONTOUR INTERVAL 10 FEET  
NORTH AMERICAN VERTICAL DATUM OF 1988  
This map was produced to conform with the  
National Geospatial Program US Topo Product Standard, 2011.  
A metadata file associated with this product is draft version 0.6.11



QUADRANGLE LOCATION

Decker Lake	Alwood	Sigaw Lake
Gimmer Lake	Dixon Lake	Pigeon Dam Lake
Pennington	Raven Lake	Benu NW

ROAD CLASSIFICATION

	Expressway		Local Connector
	Secondary Hwy		Local Road
	Ramp		4WD
	Interstate Route		US Route
	FS Primary Route		FS Passenger Route
	FS High		Clearance Route
	State Route		

Check with local Forest Service unit  
for current travel conditions and restrictions.

DIXON LAKE, MN  
2013

ADJOINING 7.5 QUADRANGLES