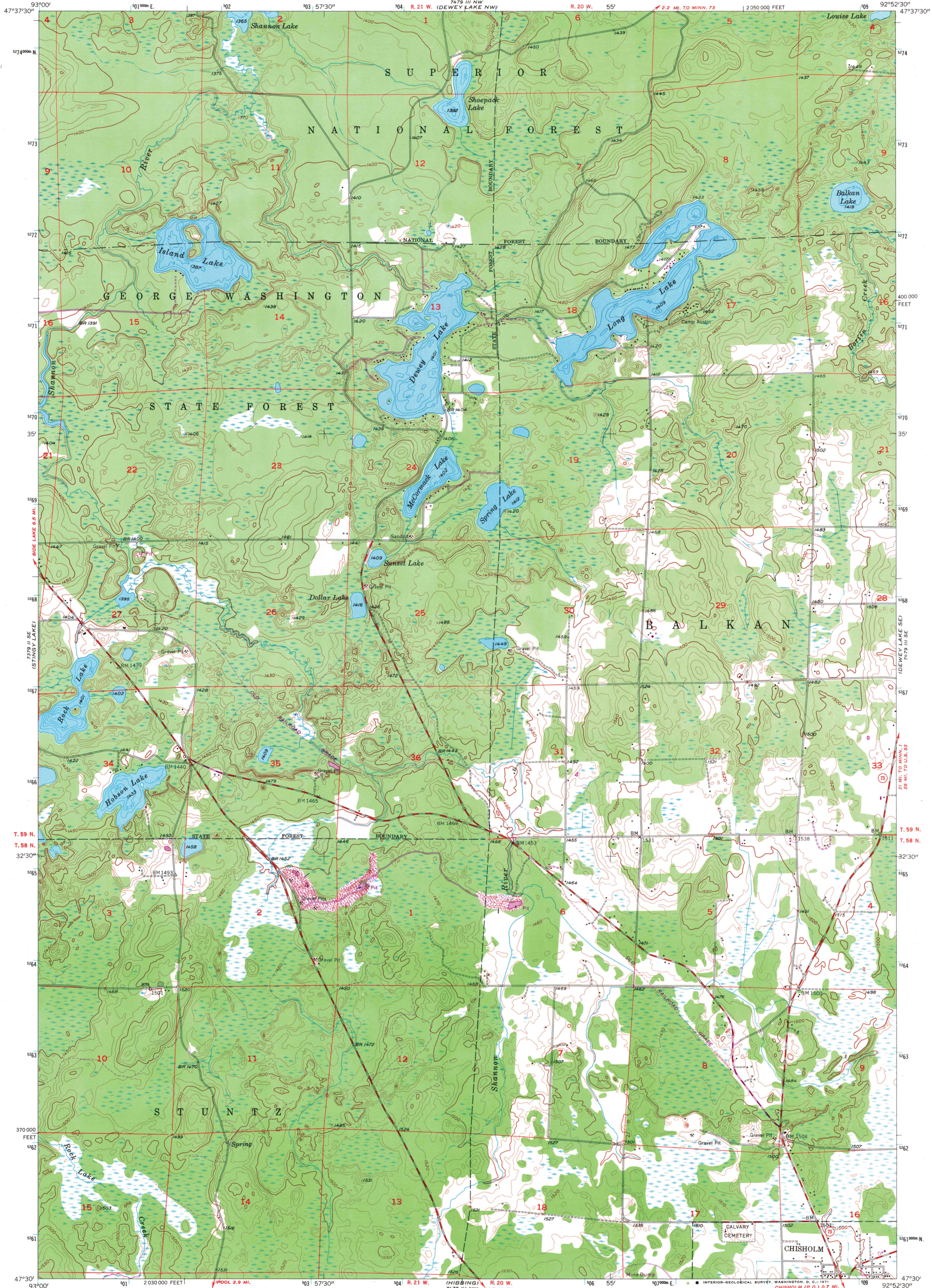


279 1/2 MI.
(SIDE LAKE)

UNITED STATES
DEPARTMENT OF THE INTERIOR
GEOLOGICAL SURVEY

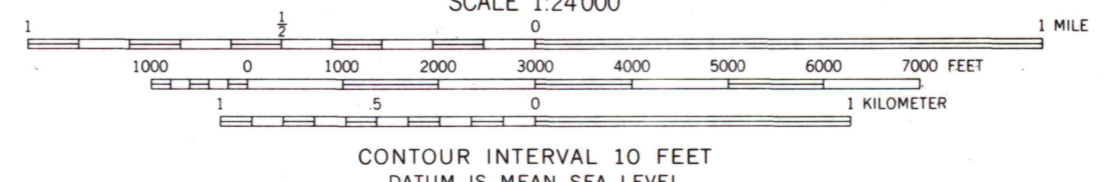
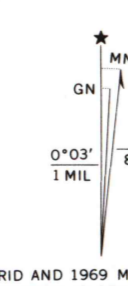
DEWEY LAKE QUADRANGLE
MINNESOTA—ST. LOUIS CO.
7.5 MINUTE SERIES (TOPOGRAPHIC)

779 1/2 MI.
(DARK LAKE)



(KEEWATWI)
739 1/2 MI.

Mapped, edited, and published by the Geological Survey
Control by USGS and USC&GS
Topography from aerial photographs by Kelsh plottor
Aerial photographs taken 1947. Field check 1955
Depth curves compiled from charts furnished by Minnesota Department of Conservation
Polyconic projection, 1927 North American datum
10,000-foot grid based on Minnesota coordinate system, north zone
1000-meter Universal Transverse Mercator grid ticks, zone 15, shown in blue
Revisions shown in purple compiled in cooperation with the Iron Range Resources and Rehabilitation Commission from aerial photographs taken 1969. This information not field checked



CONTOUR INTERVAL 10 FEET
DATUM IS MEAN SEA LEVEL



ROAD CLASSIFICATION

Heavy-duty	Light-duty
Medium-duty	Unimproved dirt
U. S. Route	State Route

THIS MAP COMPLIES WITH NATIONAL MAP ACCURACY STANDARDS
FOR SALE BY U. S. GEOLOGICAL SURVEY, DENVER, COLORADO 80225, OR WASHINGTON, D. C. 20242
A FOLDER DESCRIBING TOPOGRAPHIC MAPS AND SYMBOLS IS AVAILABLE ON REQUEST

DEWEY LAKE, MINN.
N 4730 - W 9252.5/7.5

MAY 13 1971

1955
PHOTOREVISED 1969
AMS 7479 III SW—SERIES V872