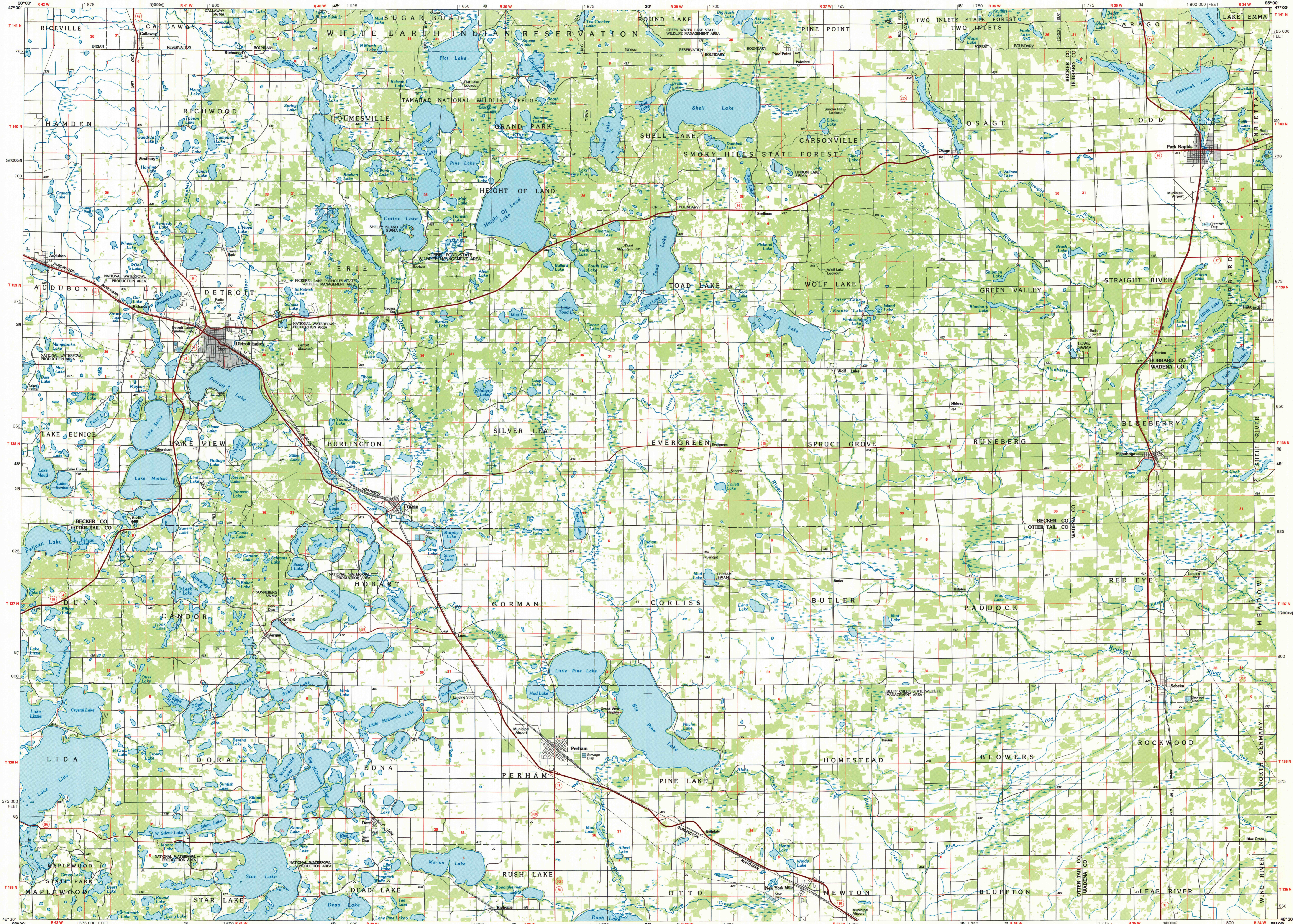


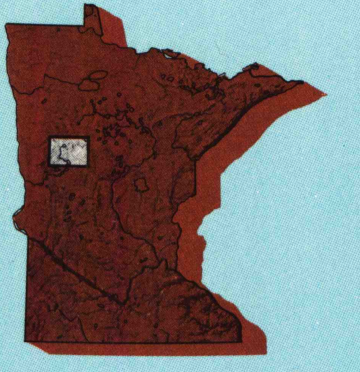
DETROIT LAKES, MINNESOTA

30 X 60 MINUTE SERIES (PLANIMETRIC)



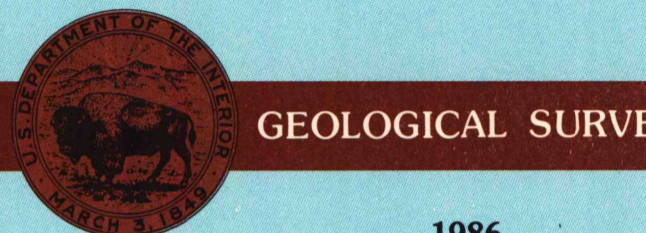
DETROIT LAKES MINNESOTA

1:100 000-scale planimetric map



30 X 60 MINUTE QUADRANGLE SHOWING

- Elevations in meters
- Highways, roads and other manmade structures
- Water features
- Woodland areas
- Geographic names



GEOLOGICAL SURVEY

1986

Produced by the United States Geological Survey
 Compiled from USGS 1:24 000-scale topographic maps dated 1959-1983. Planimetry revised from aerial photographs taken 1984 and other source data. Revised information not field checked. Map edited 1986
 Projection and 10 000-meter grid, zone 15, Universal Transverse Mercator
 25 000-foot grid ticks based on Minnesota coordinate system, central zone 1927 North American Datum
 To place on the predicted North American Datum 1983, move the projection lines 7 meters north and 22 meters east
 There may be private inholdings within the boundaries of the National or State reservations shown on this map

NATIONAL GEODETIC VERTICAL DATUM OF 1929

ELEVATIONS SHOWN TO THE NEAREST METER

THIS MAP COMPLIES WITH NATIONAL MAP ACCURACY STANDARDS

CONVERSION TABLE		DECLINATION DIAGRAM		ADJOINING MAPS	
Meters	Feet	Diagram		1	2
1	3.2808			3	4
2	6.5617			4	5
3	9.8425			5	6
4	13.1234			6	7
5	16.4042			7	8
6	19.6850				
7	22.9659				
8	26.2467				
9	29.5275				
10	32.8084				

To convert meters to feet multiply by 3.2808
 To convert feet to meters multiply by 0.3048
 UTM grid convergence (GN) and 1983 magnetic declination (M) at center of map
 Diagram is approximate

FOR SALE BY U.S. GEOLOGICAL SURVEY RESTON, VIRGINIA 22092

Topographic Map Symbols

- Primary highway, hard surface
- Secondary highway, hard surface
- Light duty road, principal street, hard or improved surface
- Other road or street, trail
- Route marker: Interstate, U.S., State
- Railroad: standard gage; narrow gage
- Bridge; overpass; underpass
- Tunnel: road; railroad
- Run-up area; locality; elevation
- Airport; landing field; landing strip
- National boundary
- State boundary
- County boundary
- National or State reservation boundary
- Land grant boundary
- U.S. public lands survey: range, township, section
- Range, township, section line; protracted
- Power transmission line; pipeline
- Dam; dam with lock
- Cemetery; building
- Windmill; water well; spring
- Mine shaft; adit or cave; mine, quarry; gravel pit
- Campground; picnic area; U.S. location monument
- Ruins; gift building
- Distorted surface: strip mine, lava, sand
- Contours: index; intermediate; supplementary
- Bathymetric contours: index; intermediate
- Stream, lake: perennial; intermittent
- Rapids, large and small; falls, large and small
- Area to be submerged; marsh, swamp
- Land subject to catastrophic inundation; woodland
- Soak; mangrove
- Orchard; vineyard

A pamphlet describing topographic maps is available on request

DETROIT LAKES, MINNESOTA 46095-E1-PL-100
 ARTHUR H. ROBINSON MAP LIBRARY University of Wisconsin-Madison 1986
 OCT 06 1986

SCALE 1:100 000
 1 CENTIMETER ON THE MAP REPRESENTS 1 KILOMETER ON THE GROUND

KILOMETERS 0 1 2 3 4 5 6 7 8 9 10 11 12 13 14 15 16 17 18 19 20
 METERS 0 1000 2000 3000 4000 5000 6000 7000 8000 9000 10000 11000 12000 13000 14000 15000 16000 17000 18000 19000 20000
 FEET 0 1000 2000 3000 4000 5000 6000 7000 8000 9000 10000 11000 12000 13000 14000 15000 16000 17000 18000 19000 20000

U.S. Regional Depository Copy DO NOT DISCARD
 SET BOC6-9/8