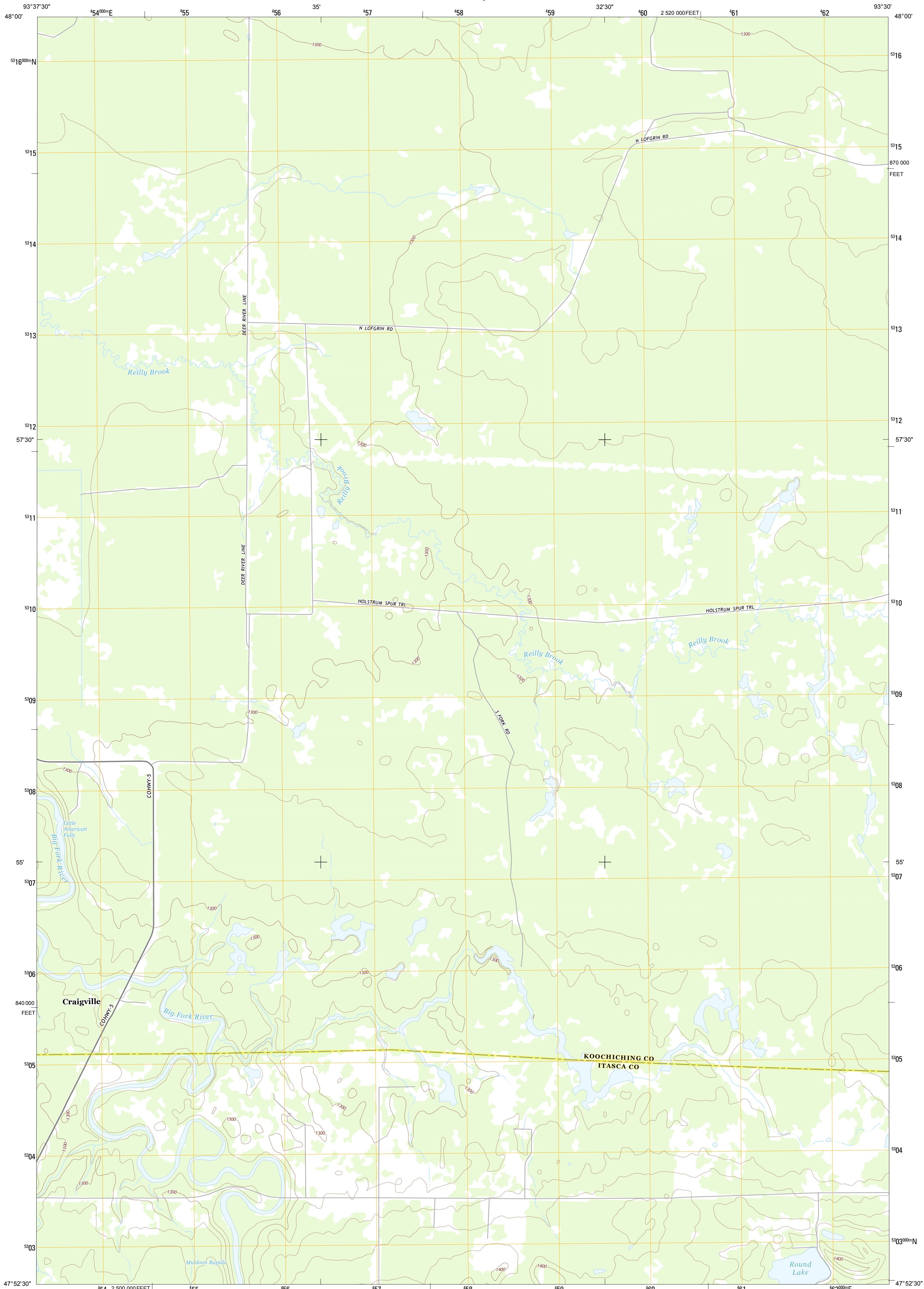




U.S. DEPARTMENT OF THE INTERIOR  
U. S. GEOLOGICAL SURVEY



CRAIGVILLE QUADRANGLE  
MINNESOTA  
7.5-MINUTE SERIES



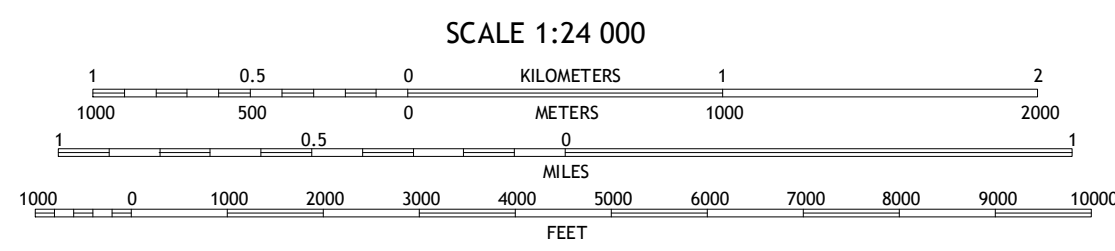
Produced by the United States Geological Survey  
North American Datum of 1983 (NAD83)  
World Geodetic System of 1984 (WGS84). Projection and  
1 000-meter grid: Universal Transverse Mercator, Zone 15T  
10 000-foot ticks: Minnesota Coordinate System of 1983 (north  
zone)

Imagery.....N.A.P., May 2010 - June 2010  
Roads.....©2006-2012 TomTom  
Names.....GNIS, 2013  
Hydrography.....National Hydrography Dataset, 2010  
Contours.....National Elevation Dataset, 1999  
Boundaries.....Census, IBWC, IBC, USGS, 1972 - 2012

UTM GRID AND 2013 MAGNETIC NORTH DECLINATION AT CENTER OF SHEET

U.S. National Grid  
100,000-m Square ID  
VP

Grid Zone Designation  
15T



CONTOUR INTERVAL 20 FEET  
NORTH AMERICAN VERTICAL DATUM OF 1988  
This map was produced to conform with the  
National Geospatial Program US Topo Product Standard, 2011.  
A metadata file associated with this product is draft version 0.6.11



ROAD CLASSIFICATION

Expressway	Local Connector
Secondary Hwy	Local Road
Ramp	AWD
Interstate Route	US Route
	State Route

QUADRANGLE LOCATION

Johnson Landing	Johnson Landing SE	Nett Lake River SW
Effie NW	Craigville	Deer Lake NW
Effie SE	Effie SE	Deer Lake West

CRAIGVILLE, MN  
2013

ADJOINING 7.5 QUADRANGLES