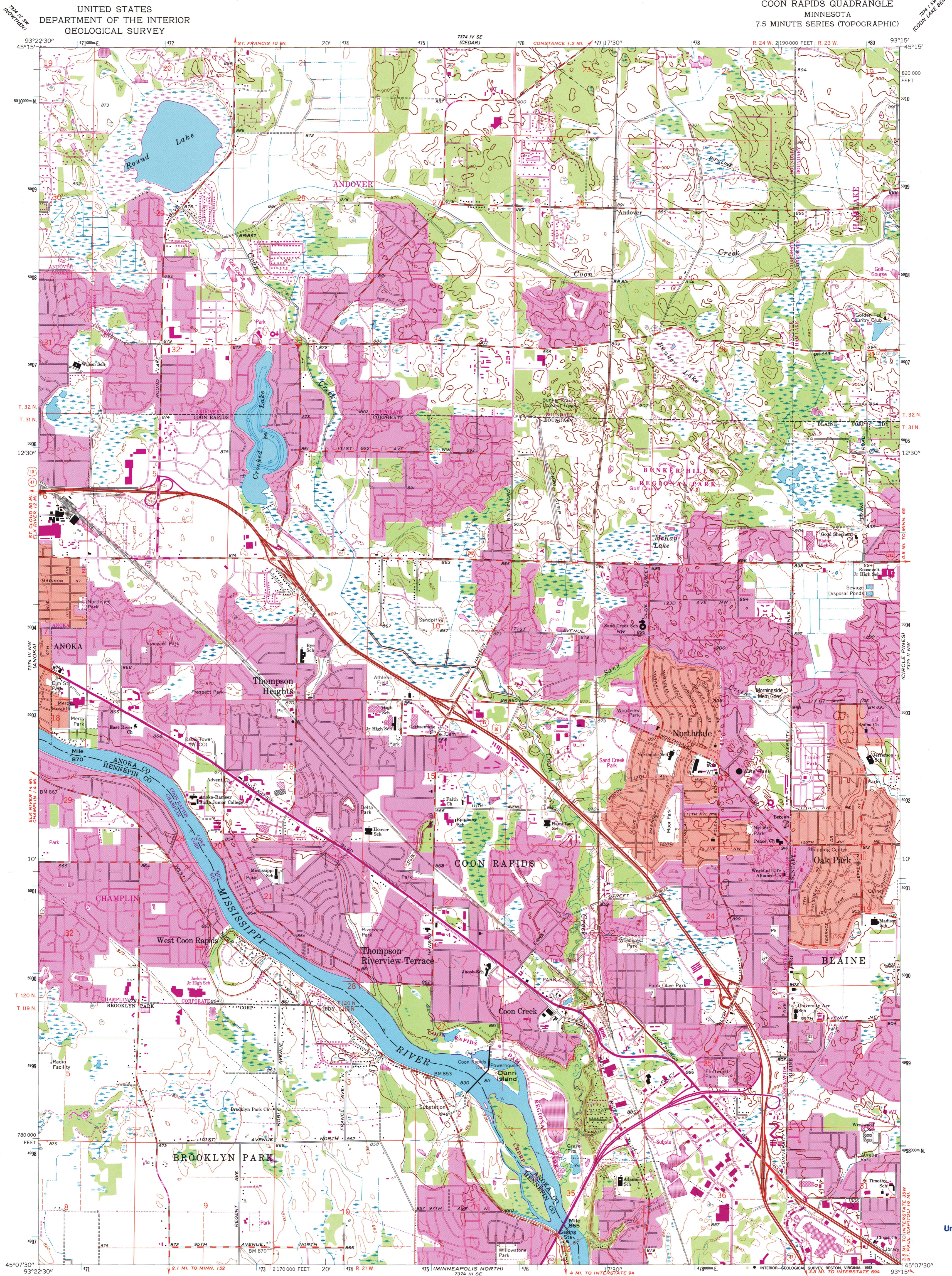
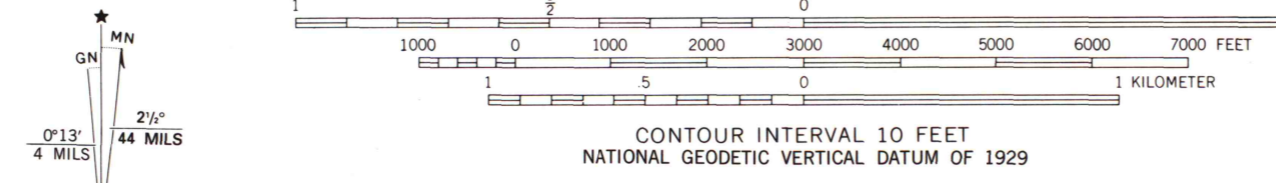


UNITED STATES
DEPARTMENT OF THE INTERIOR
GEOLOGICAL SURVEY

COON RAPIDS QUADRANGLE
MINNESOTA
7.5 MINUTE SERIES (TOPOGRAPHIC)



Produced by the United States Geological Survey
Control by USGS and NOS/NOAA
Topography by photogrammetric methods from aerial photographs taken 1947. Field checked 1955. Revised from aerial photographs taken 1966. Field checked 1967
Hydrography compiled from information furnished by Minnesota Department of Conservation
Projection and 10,000-foot grid ticks: Minnesota coordinate system, south zone (Lambert conformal conic)
1000-meter Universal Transverse Mercator grid ticks, zone 15, shown in blue
1927 North American Datum (NAD 27)
North American Datum of 1983 (NAD 83) is shown by dashed corner ticks
The values of the shift between NAD 27 and NAD 83 for 7.5-minute intersections are given in USGS Bulletin 1875
Red tint indicates areas in which only landmark buildings are shown



ROAD CLASSIFICATION

Primary highway, hard surface	Light-duty road, hard or improved surface
Secondary highway, hard surface	Unimproved road
Interstate Route	U. S. Route
	State Route

COON RAPIDS, MINN.
45093-B3-TF-024
1967
REVISED 1993
DMA 7374 III NE—SERIES V872

A.H. ROBINSON
MAP LIBRARY
MAR 24 1994
University of Wisconsin
Madison
U.S. Regional
Depository Copy
DO NOT DISCARD

THIS MAP COMPLIES WITH NATIONAL MAP ACCURACY STANDARDS
FOR SALE BY U.S. GEOLOGICAL SURVEY, DENVER, COLORADO 80225, OR RESTON, VIRGINIA 22092
A FOLDER DESCRIBING TOPOGRAPHIC MAPS AND SYMBOLS IS AVAILABLE ON REQUEST

Revisions shown in purple and woodland compiled in cooperation with State of Minnesota agencies from aerial photographs taken 1991 and other sources
Contours not revised. This information not field checked
Map edited 1993
Purple tint indicates extension of urban areas