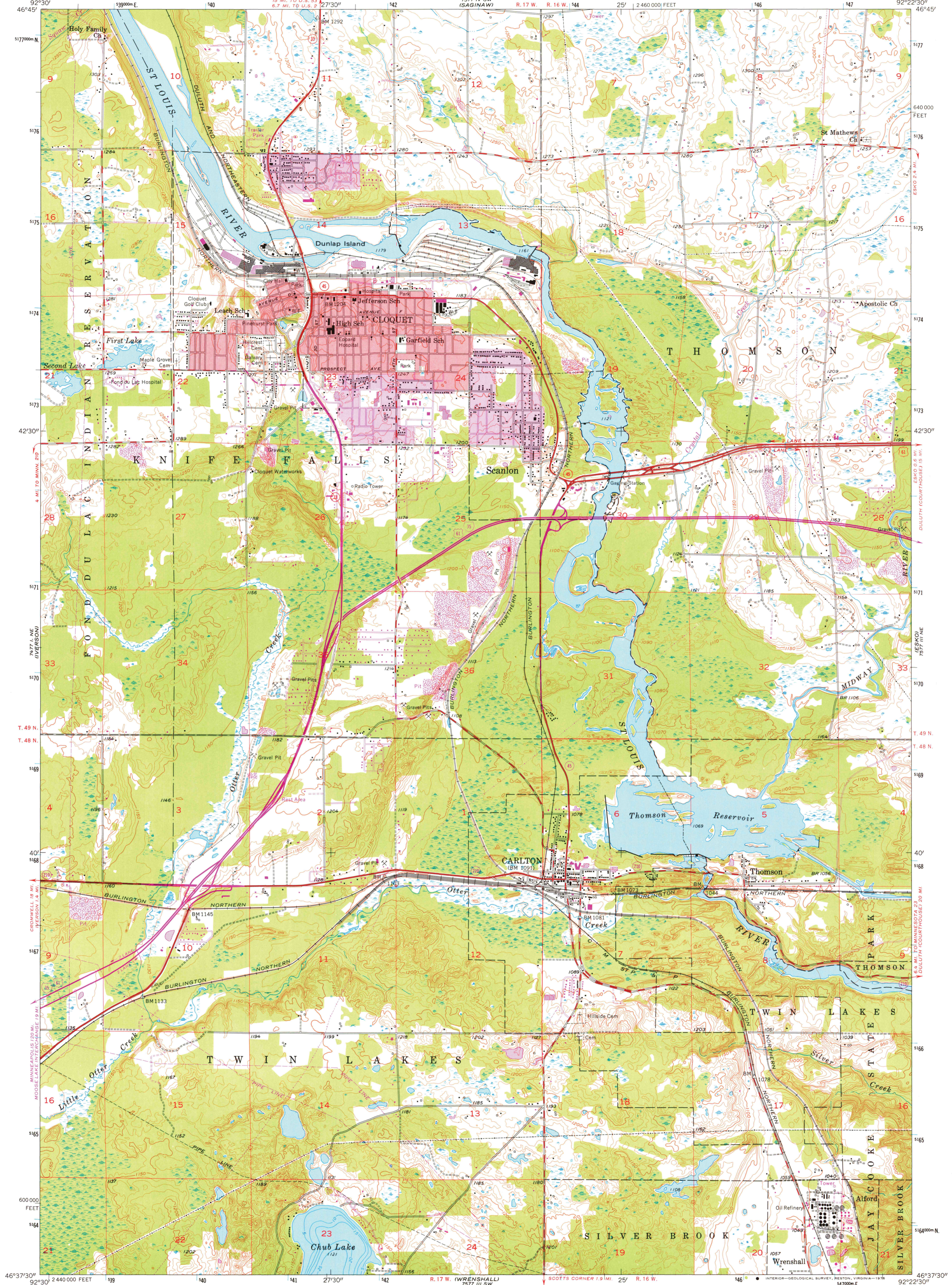


UNITED STATES
DEPARTMENT OF THE INTERIOR
GEOLOGICAL SURVEY

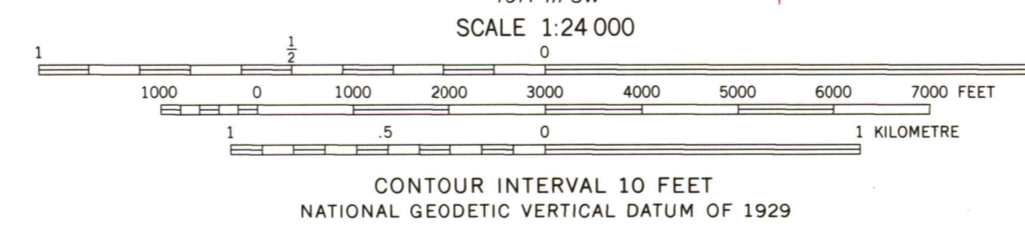
CLOQUET QUADRANGLE
MINNESOTA—CARLTON CO
7.5 MINUTE SERIES (TOPOGRAPHIC)

7577 I SE
600000 N

7577 I SE
600000 N



Mapped, edited, and published by the Geological Survey
Control by USGS and USC&GS
Topography by photogrammetric methods from aerial
photographs taken 1952. Field checked 1954
Depth curves compiled from charts furnished
by Minnesota Department of Conservation
Polyconic projection. 1927 North American datum
10,000-foot grid based on Minnesota coordinate system, central zone
1000 metre Universal Transverse Mercator grid ticks
zone 15, shown in blue
Red tint indicates areas in which only landmark buildings are shown
Revisions shown in purple compiled in cooperation
with the State of Minnesota from aerial photographs
taken 1969 and 1975. This information not field checked
Purple tint indicates extension of urban areas



ROAD CLASSIFICATION

- Heavy-duty —————
- Medium-duty —————
- Light-duty —————
- Unimproved dirt —————

U.S. Route
State Route
Interstate Route

CLOQUET, MINN.
N4637.5—W9222.5/7.5

USGS
Historical File
Topographic Division

1954
PHOTOREVISED 1969 AND 1975
AMS 7577 III NW—SERIES V872

THIS MAP COMPLIES WITH NATIONAL MAP ACCURACY STANDARDS
FOR SALE BY U.S. GEOLOGICAL SURVEY, RESTON, VIRGINIA 22092
A FOLDER DESCRIBING TOPOGRAPHIC MAPS AND SYMBOLS IS AVAILABLE ON REQUEST

FEB 23 1977
3190