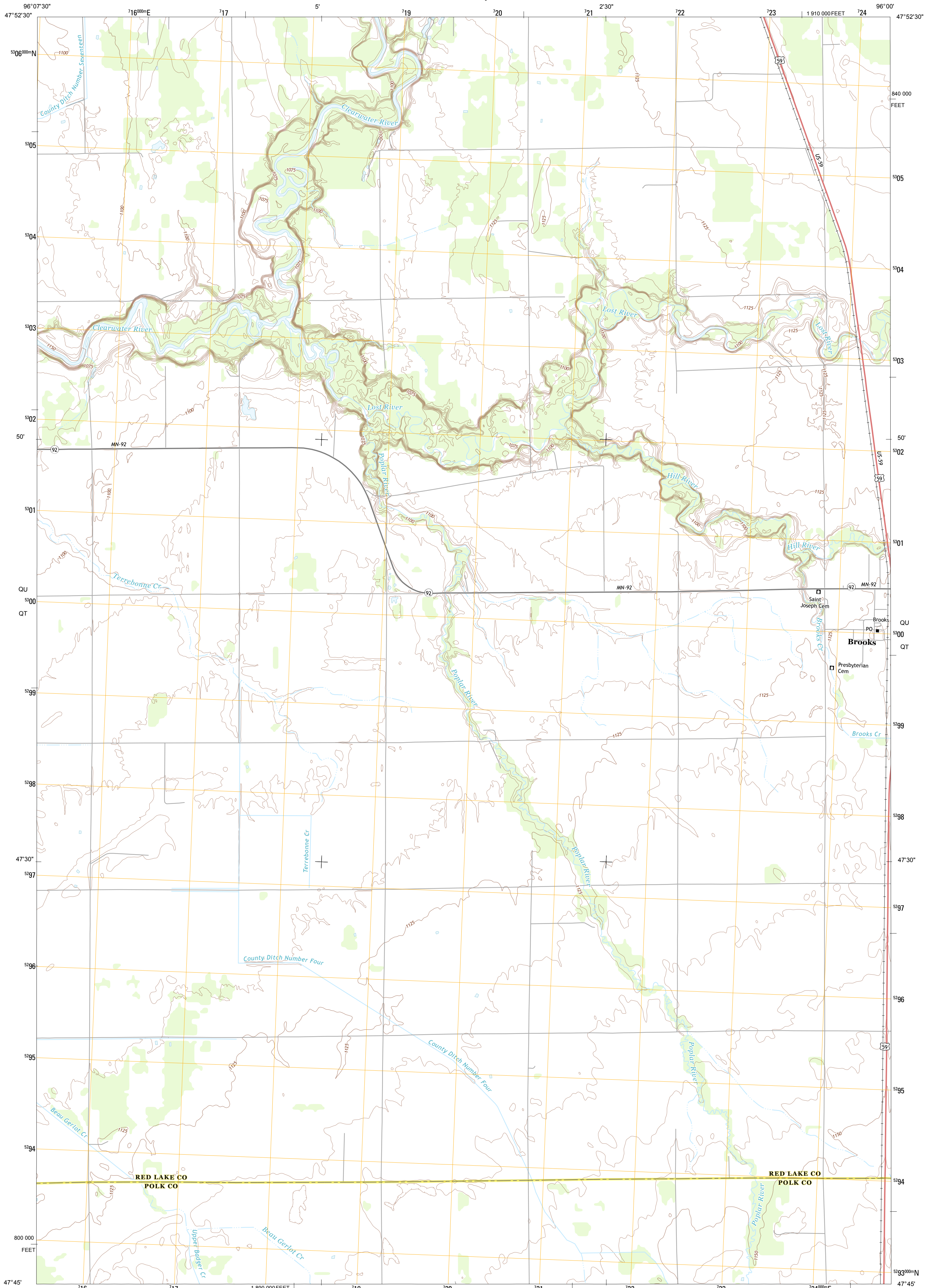




U.S. DEPARTMENT OF THE INTERIOR
U. S. GEOLOGICAL SURVEY

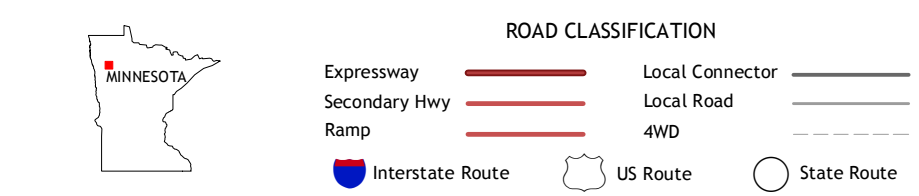
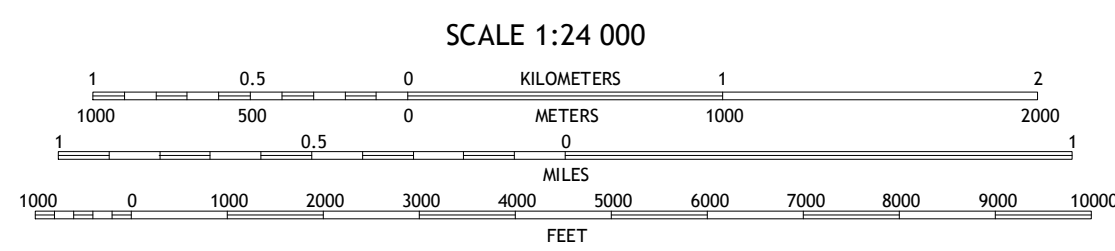
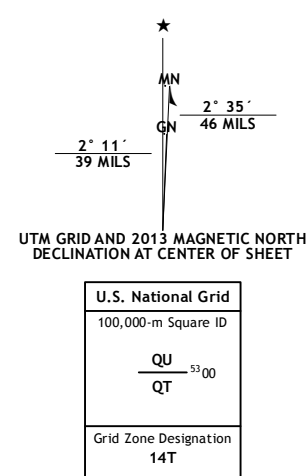


BROOKS QUADRANGLE
MINNESOTA
7.5-MINUTE SERIES



Produced by the United States Geological Survey
North American Datum of 1983 (NAD83)
World Geodetic System of 1984 (WGS84). Projection and
1 000-meter grid: Universal Transverse Mercator, Zone 14T
10 000-foot ticks: Minnesota Coordinate System of 1983 (north
zone)

Imagery.....NAIP, June 2010
Roads.....©2006-2012 TomTom
Names.....GNIS, 2013
Hydrography.....National Hydrography Dataset, 2010
Contours.....National Elevation Dataset, 2012
Boundaries.....Census, IBWC, IBC, USGS, 1972 - 2012



QUADRANGLE LOCATION

Plummer NW	Plummer	Olney NW
Terrebonne	Brooks	Olney SW
Mentor	Erskine	McIntosh

BROOKS, MN
2013

ADJOINING 7.5 QUADRANGLES