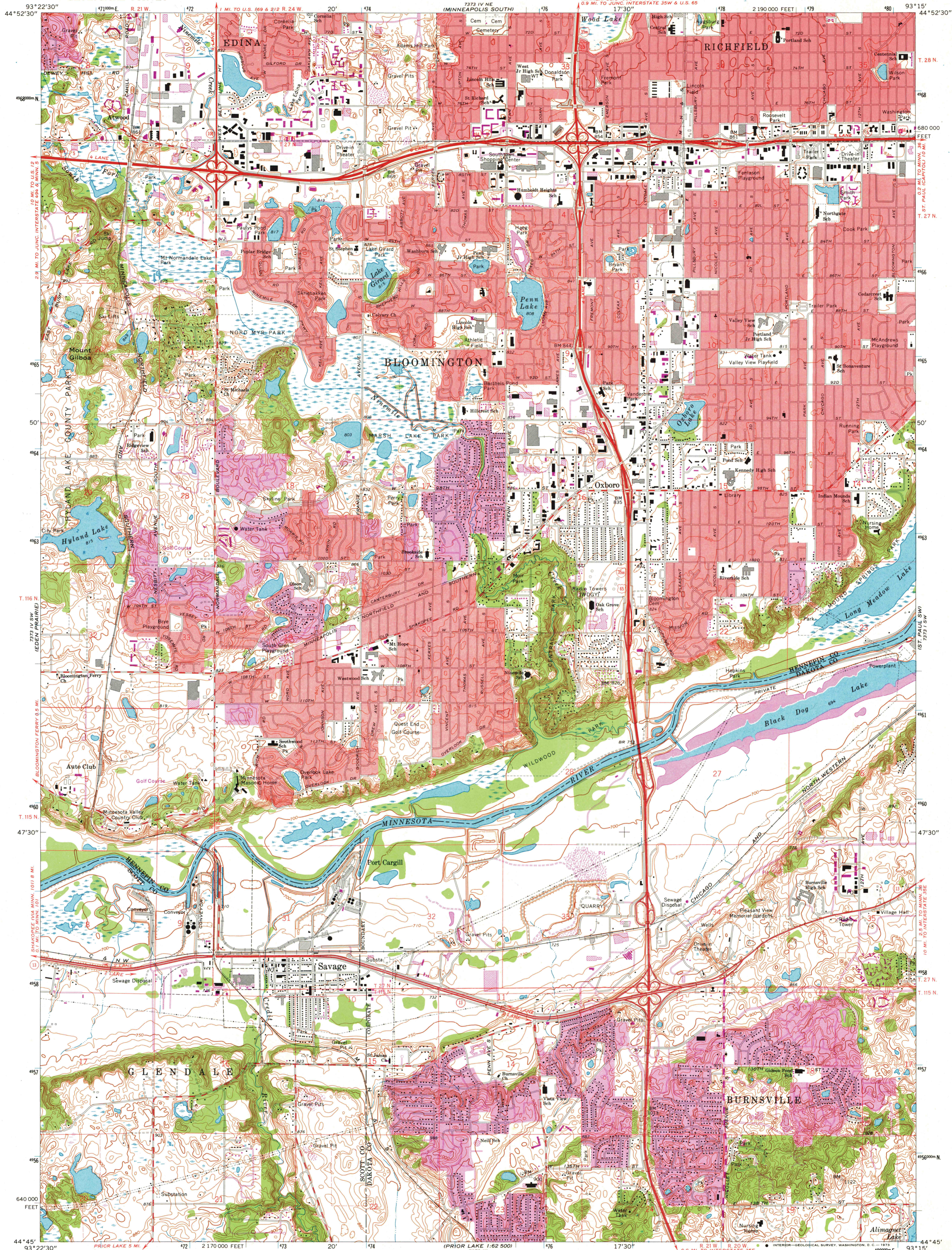


UNITED STATES  
DEPARTMENT OF THE INTERIOR  
GEOLOGICAL SURVEY

BLOOMINGTON QUADRANGLE  
MINNESOTA  
7.5 MINUTE SERIES (TOPOGRAPHIC)  
SE/4 MINNEAPOLIS 15' QUADRANGLE



Mapped, edited, and published by the Geological Survey

Control by USGS and USC&GS

Topography by photogrammetric methods from aerial photographs taken 1947 and 1951 and planetable surveys 1954. Revised from aerial photographs taken 1966. Field checked 1967

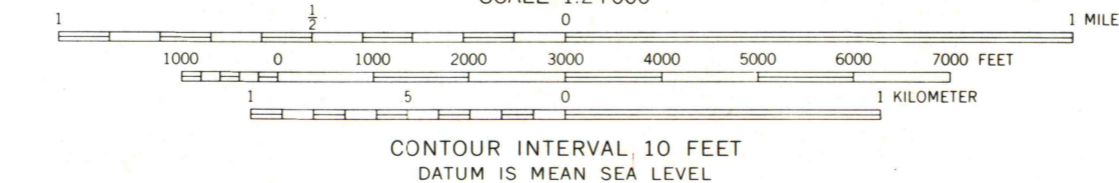
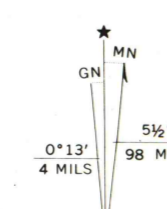
Hydrography compiled from information furnished by Minnesota Department of Conservation

Polyconic projection. 1927 North American datum 10,000-foot grid based on Minnesota coordinate system, south zone 1000-meter Universal Transverse Mercator grid ticks, zone 15, shown in blue

Red tint indicates areas in which only landmark buildings are shown

Dotted land lines established by private survey

Fine red dashed lines indicate selected fence and field lines where generally visible on aerial photographs. This information is unchecked



CONTOUR INTERVAL 10 FEET  
DATUM IS MEAN SEA LEVEL



ROAD CLASSIFICATION

Heavy-duty	Light duty
Medium-duty	Unimproved dirt
Interstate Route	U.S. Route
	State Route

THIS MAP COMPLIES WITH NATIONAL MAP ACCURACY STANDARDS  
FOR SALE BY U.S. GEOLOGICAL SURVEY, DENVER, COLORADO 80225, OR WASHINGTON, D.C. 20242  
A FOLDER DESCRIBING TOPOGRAPHIC MAPS AND SYMBOLS IS AVAILABLE ON REQUEST

Revision shown in purple compiled from aerial photographs taken 1972. This information not field checked  
Purple tint indicates extension of urban areas

BLOOMINGTON, MINNMAP AND AIR PHOTO LIBRARY  
SE/4 MINNEAPOLIS 15' QUADRANGLE  
N4445—W9315/7.5

1967  
PHOTOREVISED 1972  
AMS 7373 IV SE—SERIES V872

OCT 10 1973