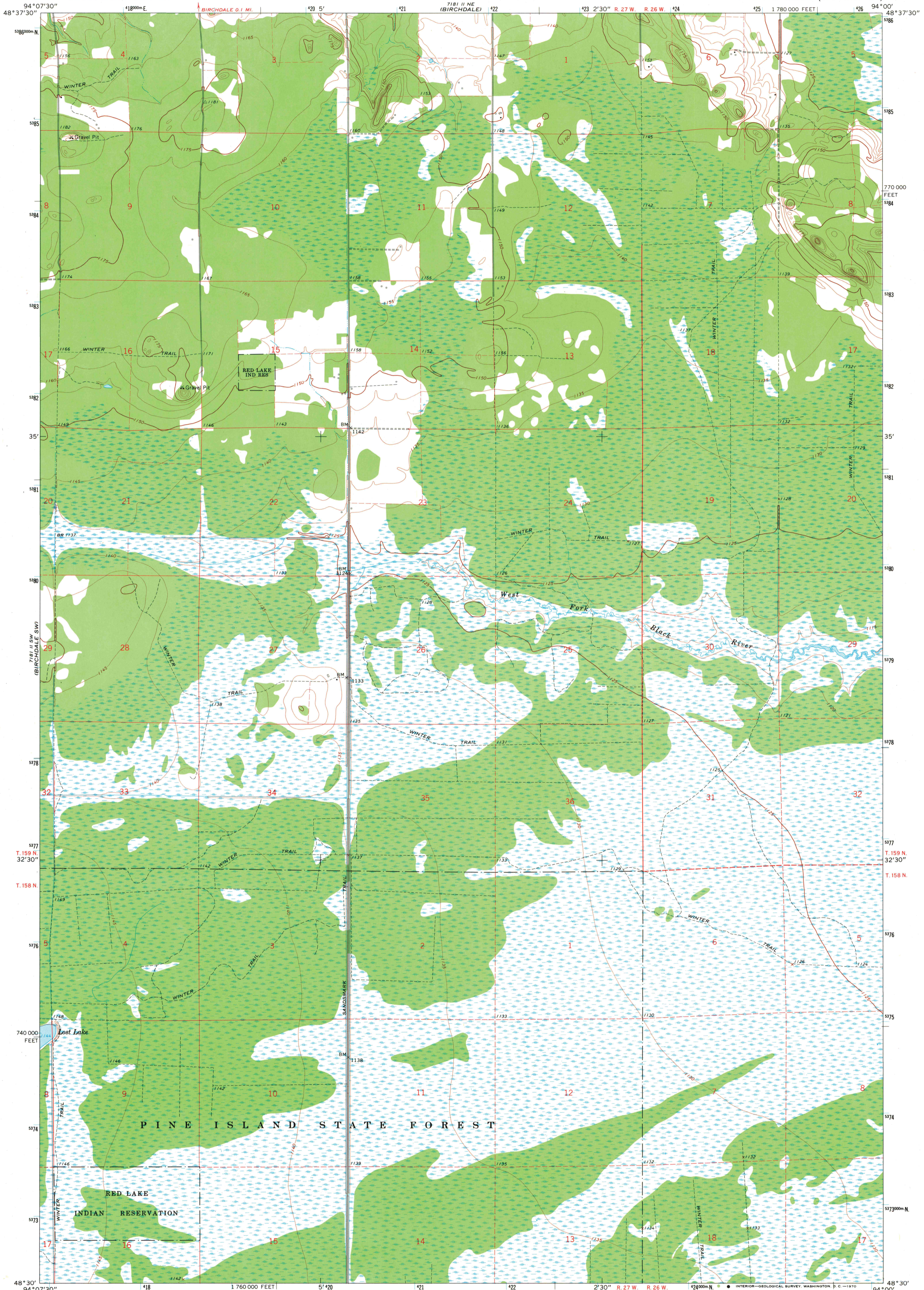


251, 1, 1000  
GARRETTON

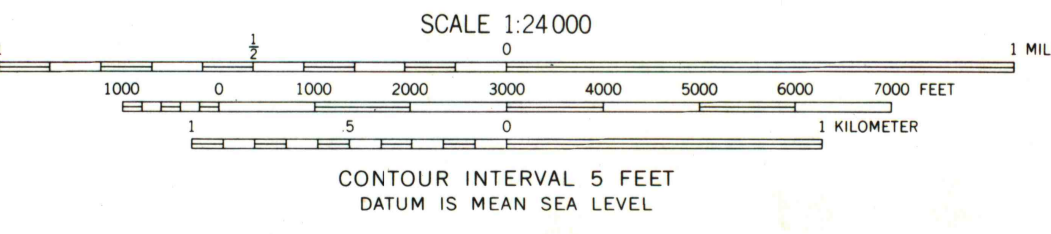
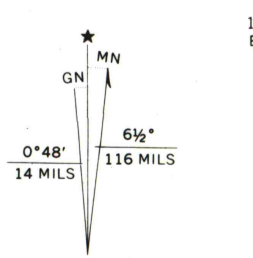
UNITED STATES  
DEPARTMENT OF THE INTERIOR  
GEOLOGICAL SURVEY

STATE OF MINNESOTA  
DEPARTMENT OF ADMINISTRATION

BIRCHDALE SE QUADRANGLE  
MINNESOTA - KOOCHICHING CO.  
7.5 MINUTE SERIES (TOPOGRAPHIC)



Mapped, edited, and published by the Geological Survey  
Control by USGS and USC&GS  
Planimetry by photogrammetric methods from aerial photographs taken 1966. Topography by planetable surveys 1968  
Polyconic projection. 1927 North American datum  
10,000-foot grid based on Minnesota coordinate system, north zone  
1000-meter Universal Transverse Mercator grid ticks, zone 15, shown in blue  
Fine red dashed lines indicate selected fence and field lines where generally visible on aerial photographs  
This information is unchecked



ROAD CLASSIFICATION  
Light-duty road, all weather, improved surface  
Unimproved road, fair or dry weather

THIS MAP COMPLIES WITH NATIONAL MAP ACCURACY STANDARDS  
FOR SALE BY U.S. GEOLOGICAL SURVEY, DENVER, COLORADO 80225, OR WASHINGTON, D.C. 20242  
A FOLDER DESCRIBING TOPOGRAPHIC MAPS AND SYMBOLS IS AVAILABLE ON REQUEST

BIRCHDALE SE, MINN.  
N4830-W9400/7.5  
1968  
AMS 7181 II SE-SERIES V872

MAP AND AIR PHOTO LIBRARY  
SEP 29 1970  
University of Wisconsin