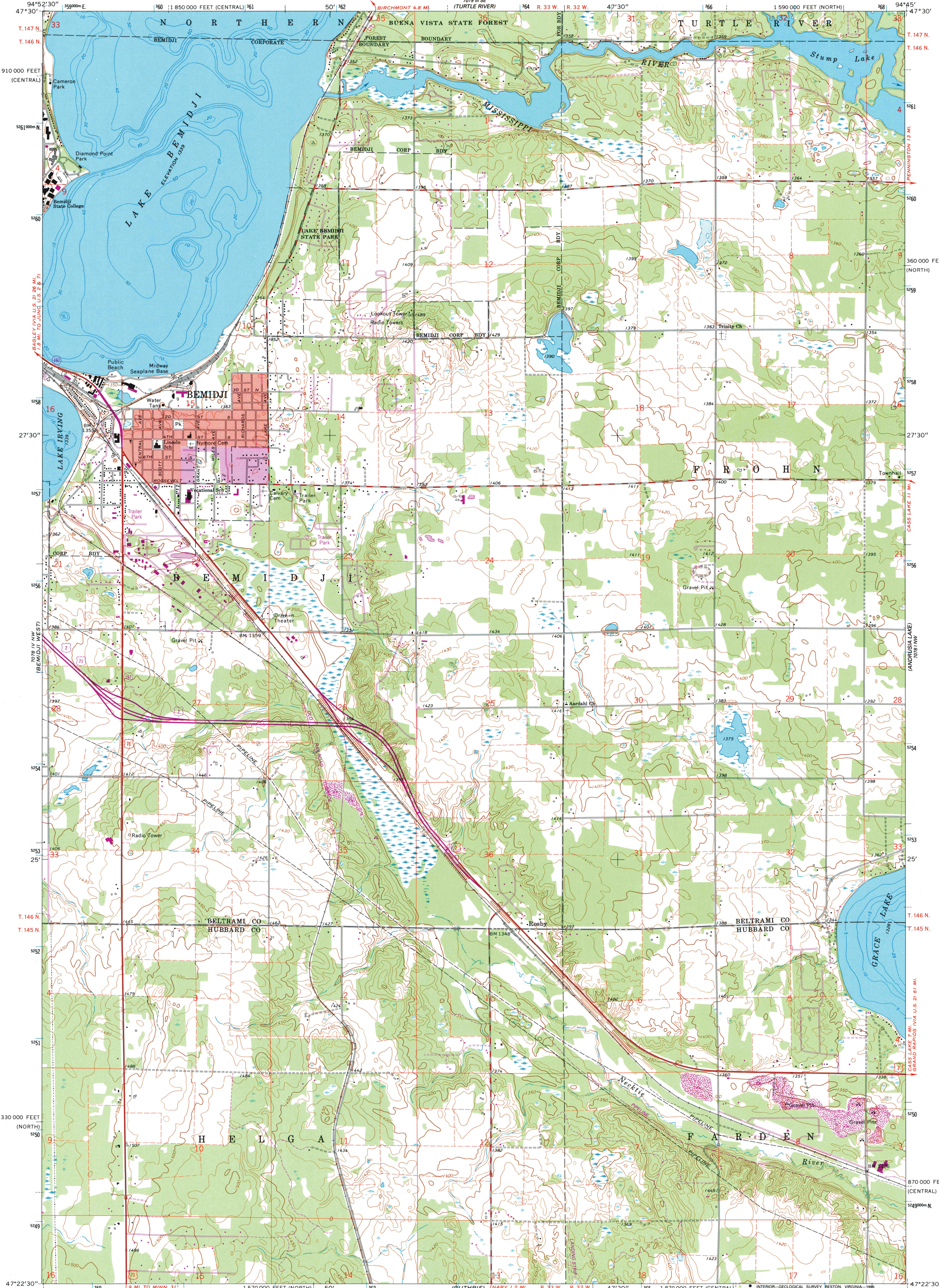


UNITED STATES
DEPARTMENT OF THE INTERIOR
GEOLOGICAL SURVEY

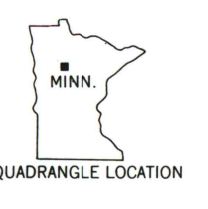
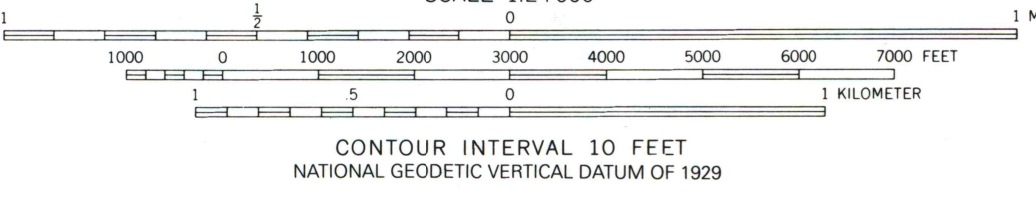
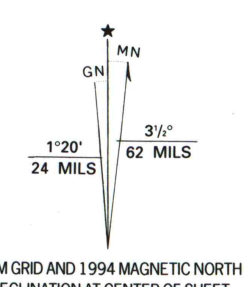
BEMIDJI EAST QUADRANGLE
MINNESOTA
7.5 MINUTE SERIES (TOPOGRAPHIC)



U.S. Regional
Depository Copy
DO NOT DISCARD

A.H. ROBINSON
MAP LIBRARY
AUG 28 1995
University of Wisconsin
Madison

Produced by the United States Geological Survey
Control by USGS and NOS/NOAA
Topography by photogrammetric methods from aerial
photographs taken 1967. Field checked 1968
Hydrography compiled from information furnished by
Minnesota Department of Natural Resources
North American Datum of 1927 (NAD 27). Projection and
10 000-foot ticks: Minnesota coordinate system, north zone
(Lambert conformal conic)
Blue 1 000-meter Universal Transverse Mercator ticks, zone 15
North American Datum of 1983 (NAD 83) is shown by dashed
corner ticks. The values of the shift between NAD 27 and NAD 83
for 7.5-minute intersections are obtainable from National Geodetic
Survey NADCON software
There may be private inholdings within the boundaries of
the National or State reservations shown on this map
Red tint indicates areas in which only landmark buildings are shown
Fine red dashed lines indicate selected fence and field lines where
generally visible on aerial photographs. This information is unchecked



ROAD CLASSIFICATION

Primary highway, hard surface	Light-duty road, hard or improved surface
Secondary highway, hard surface	Unimproved road
Interstate Route	U.S. Route
	State Route

THIS MAP COMPLIES WITH NATIONAL MAP ACCURACY STANDARDS
FOR SALE BY U.S. GEOLOGICAL SURVEY
DENVER, COLORADO 80225, OR RESTON, VIRGINIA 22092
A FOLDER DESCRIBING TOPOGRAPHIC MAPS AND SYMBOLS IS AVAILABLE ON REQUEST

Revisions shown in purple compiled in cooperation with
State of Minnesota agencies from aerial photographs
taken 1991-92 and other sources. This information not
field checked. Map edited 1994
Information shown in purple may not meet USGS content
standards and may conflict with previously mapped contours

BEMIDJI EAST, MINN.
47094-D7-TF-024
1968
REVISED 1994