

Mapped, edited, and published by the Geological Survey

Control by USGS and NOS/NOAA

Topography by photogrammetric methods from aerial photographs taken 1973. Field checked 1974

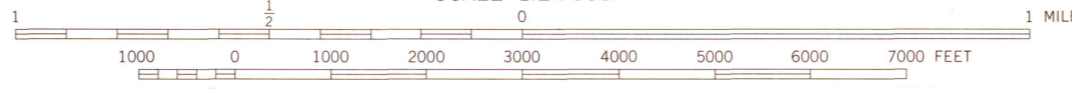
Projection: Minnesota coordinate system, south zone (Lambert conformal conic)

10,000-foot grid ticks based on Minnesota coordinate system, south and central zones

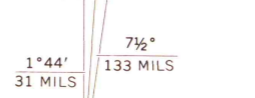
1000-metre Universal Transverse Mercator grid ticks, zone 14, shown in blue. 1927 North American datum

Fine red dashed lines indicate selected fence and field lines where generally visible on aerial photographs

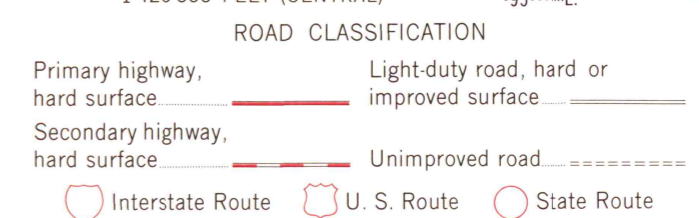
This information is unchecked



CONTOUR INTERVAL 5 FEET  
NATIONAL GEODETIC VERTICAL DATUM OF 1929



THIS MAP COMPLIES WITH NATIONAL MAP ACCURACY STANDARDS  
FOR SALE BY U. S. GEOLOGICAL SURVEY, RESTON, VIRGINIA 22092  
A FOLDER DESCRIBING TOPOGRAPHIC MAPS AND SYMBOLS IS AVAILABLE ON REQUEST



BARRY, MINN.  
SE 1/4 BEARDSLEY 15' QUADRANGLE  
N4530-W9630/7.5  
1974

AMS 6675 II SE-SERIES V872

MAP AND AIR PHOTO  
LIBRARY

JAN 18 1977

University of Wisconsin  
Madison