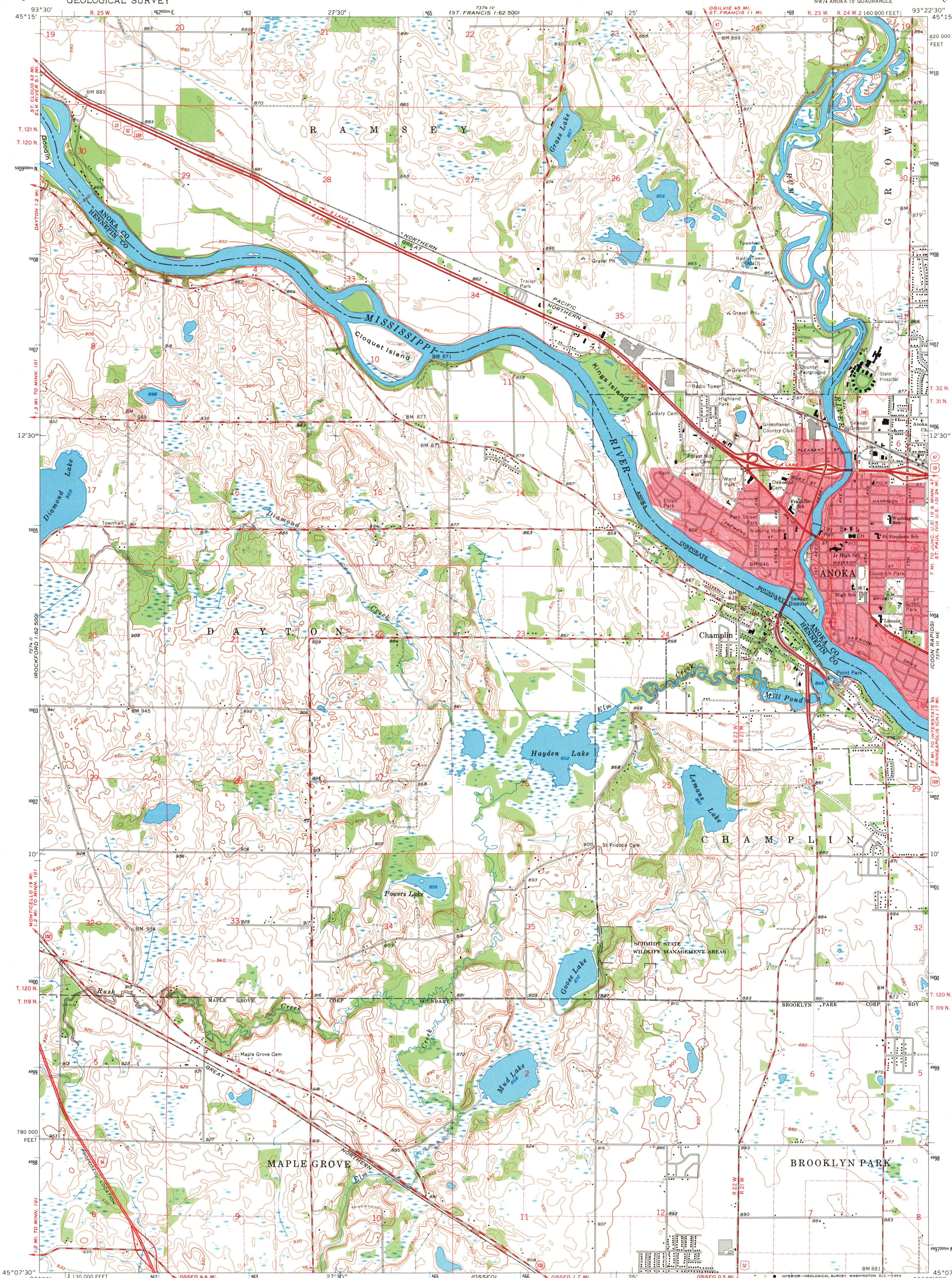


UNITED STATES  
DEPARTMENT OF THE INTERIOR  
GEOLOGICAL SURVEY

ANOKA QUADRANGLE  
MINNESOTA  
7.5 MINUTE SERIES (TOPOGRAPHIC)  
NW/4 ANOKA 15' QUADRANGLE



Mapped, edited, and published by the Geological Survey  
Control by USGS, USC&GS, USCE, and Minnesota Geodetic Survey  
Topography by photogrammetric methods from aerial photographs taken 1947. Field checked 1955. Revised 1967  
Polyconic projection. 1927 North American datum  
10,000-foot grid based on Minnesota coordinate system, south zone  
1000-meter Universal Transverse Mercator grid ticks, zone 15, shown in blue  
Red tint indicates areas in which only landmark buildings are shown  
Fine red dashed lines indicate selected fence and field lines where generally visible on aerial photographs. This information is unchecked

UTM GRID AND 1967 MAGNETIC NORTH DECLINATION AT CENTER OF SHEET

SCALE 1:24,000  
CONTOUR INTERVAL 10 FEET  
DATUM IS MEAN SEA LEVEL

ROAD CLASSIFICATION  
Heavy-duty ——— Light-duty ———  
Medium-duty ——— Unimproved dirt - - - - -  
Interstate Route (I) U.S. Route (U) State Route (S)

ANOKA, MINN.  
NW/4 ANOKA 15' QUADRANGLE  
N4507.5-W9322.5/7.5

OCT 27 1969

AMS 7374 III NW-SERIES V872

University of Wisconsin