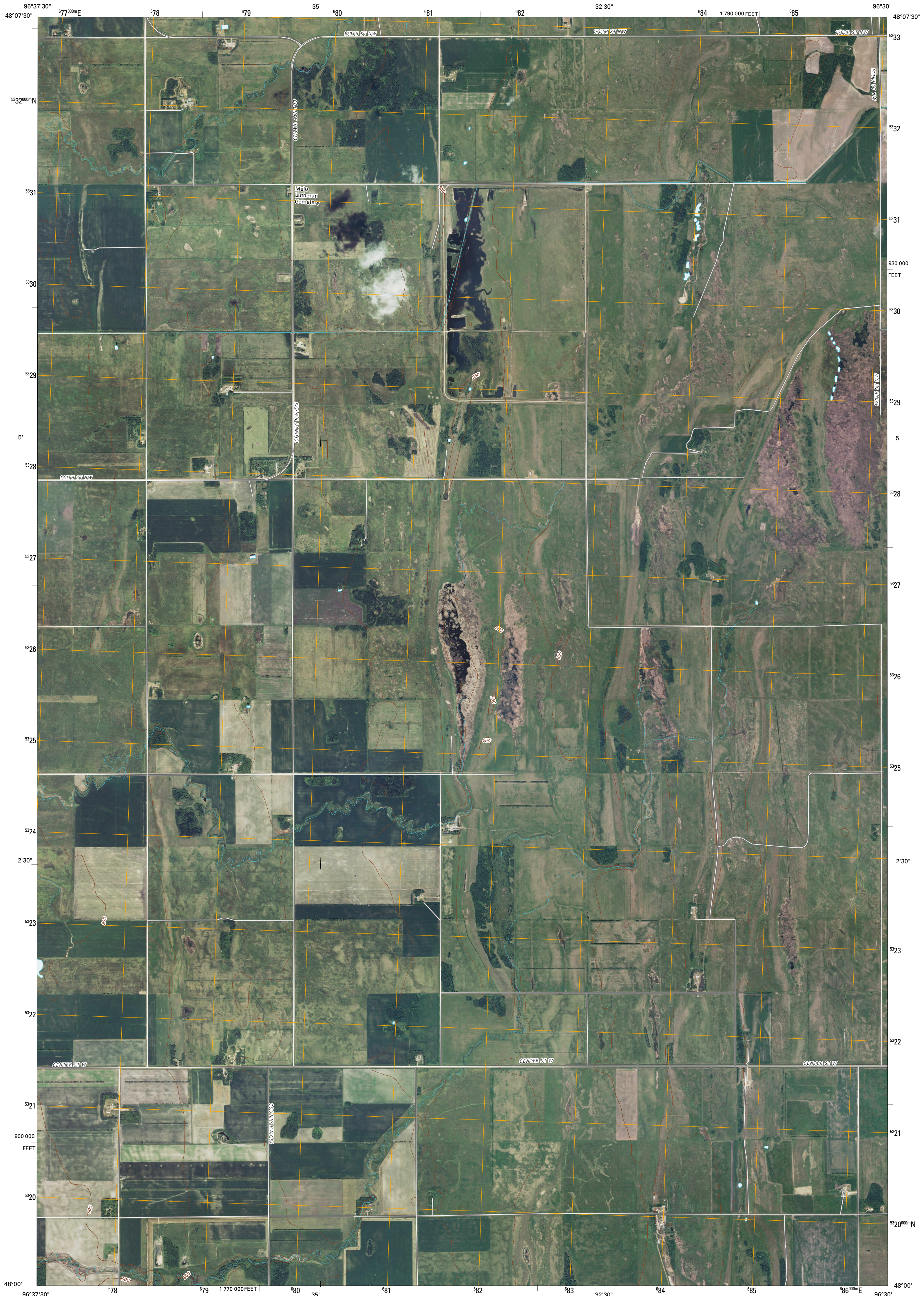




U.S. DEPARTMENT OF THE INTERIOR  
U. S. GEOLOGICAL SURVEY



ANGUS SE QUADRANGLE  
MINNESOTA  
7.5-MINUTE SERIES

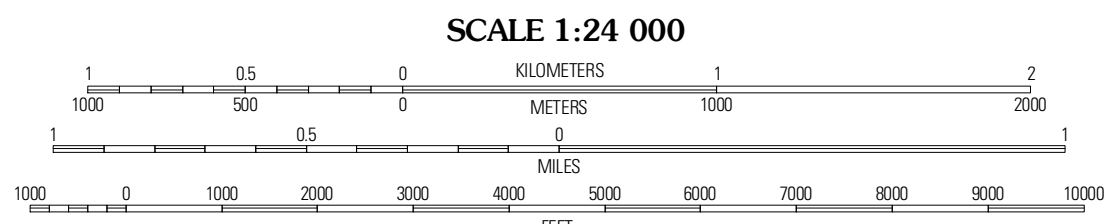


Produced by the United States Geological Survey  
North American Datum of 1983 (NAD83)  
World Geodetic System of 1984 (WGS84) Projection and  
1 000-meter grid: Universal Transverse Mercator, Zone 14U  
10 000-foot ticks: Minnesota Coordinate System of 1983  
(north zone)

Imagery.....NAP, June 2009  
Roads.....S2006-2010 Tele Atlas  
Names.....GNIS, 2008  
Hydrography.....National Hydrography Dataset, 2009  
Contours.....National Elevation Dataset, 1999

UTM GRID AND 2010 MAGNETIC NORTH DECLINATION AT CENTER OF SHEET

U.S. National Grid	100,000-m Square
PU	
Grid Zone Designation	14U



CONTOUR INTERVAL 10 FEET  
NORTH AMERICAN VERTICAL DATUM OF 1988

This map was produced to conform with version 0.5.10 of the draft USGS Standards for 7.5-Minute Quadrangle Maps. A metadata file associated with this product is draft version 0.5.11



QUADRANGLE LOCATION

Roan	Radium	Viking
Angus	Angus SE	Viking SW
Euclid	Crookston NE	Dorothy

ADJOINING 7.5' QUADRANGLES

ROAD CLASSIFICATION

Interstate Route	State Route
US Route	Local Road
Ramp	4WD

Interstate Route   
 US Route   
 State Route

ANGUS SE, MN  
2010