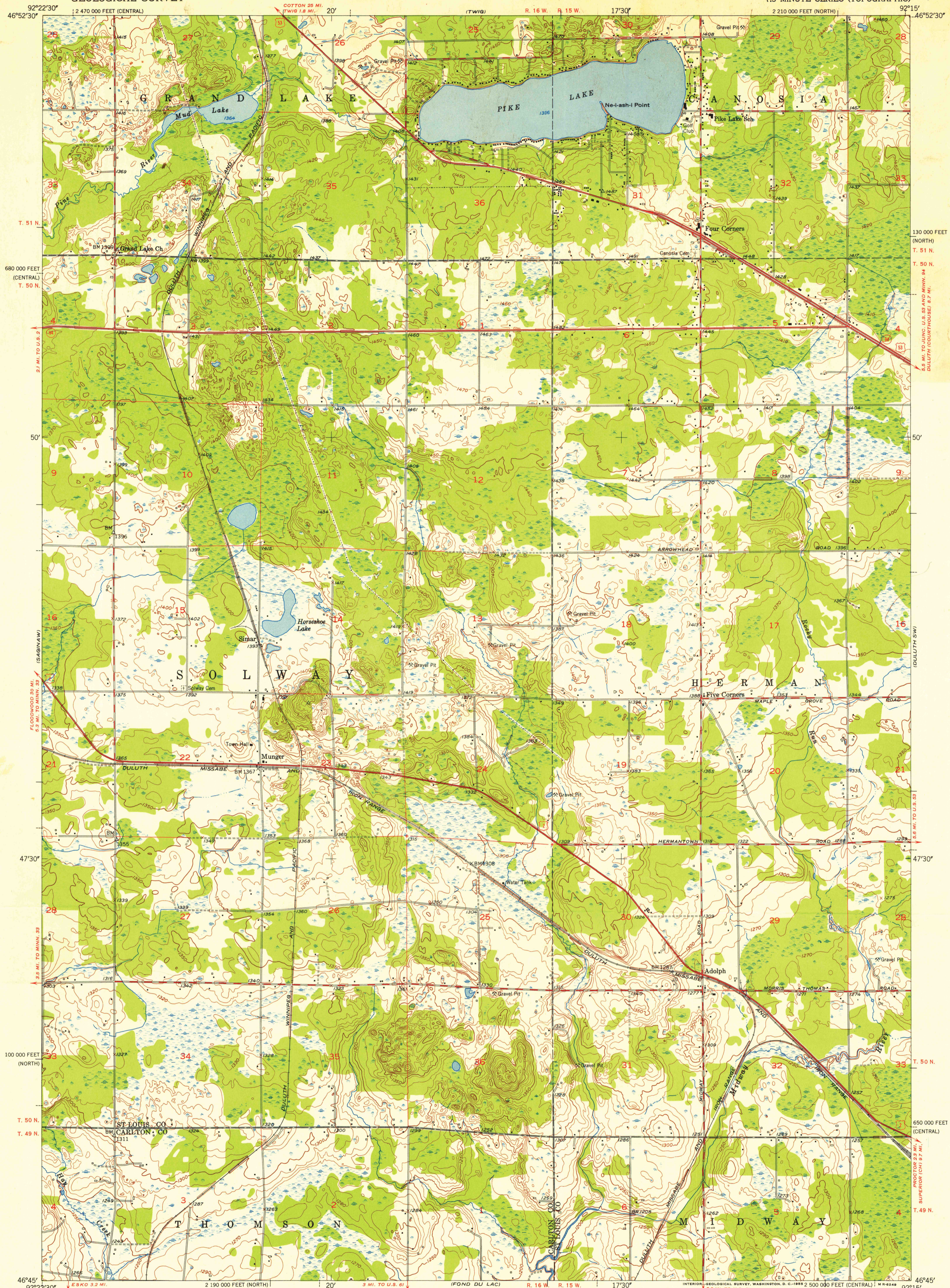


UNITED STATES
DEPARTMENT OF THE INTERIOR
GEOLOGICAL SURVEY

ADOLPH QUADRANGLE
MINNESOTA
7.5 MINUTE SERIES (TOPOGRAPHIC)



Mapped, edited, and published by the Geological Survey

Control by USGS and USC&GS

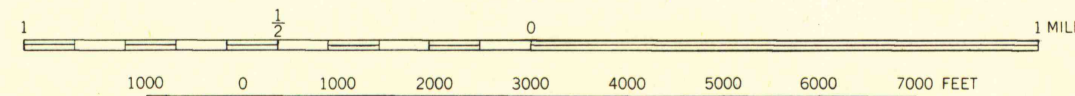
Topography from aerial photographs by Kesh plotter

Aerial photographs taken 1952. Field check 1953

Polyconic projection. 1927 North American datum

10,000-foot grids based on Minnesota coordinate system, north and central zones

SCALE 1:24000



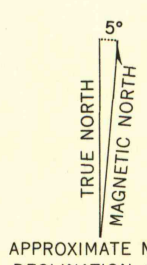
CONTOUR INTERVAL 10 FEET
DATUM IS MEAN SEA LEVEL

ROAD CLASSIFICATION

Heavy-duty 4 LANE 6 LANE Light-duty

Medium-duty 4 LANE 6 LANE Unimproved dirt

U. S. Route State Route



THIS MAP COMPLIES WITH NATIONAL MAP ACCURACY STANDARDS
FOR SALE BY U. S. GEOLOGICAL SURVEY, FEDERAL CENTER, DENVER, COLORADO OR WASHINGTON 25, D. C.
A FOLDER DESCRIBING TOPOGRAPHIC MAPS AND SYMBOLS IS AVAILABLE ON REQUEST

ADOLPH, MINN.
N4645-W9215/7.5

1953

UNIVERSITY OF WISCONSIN
Department of Geography