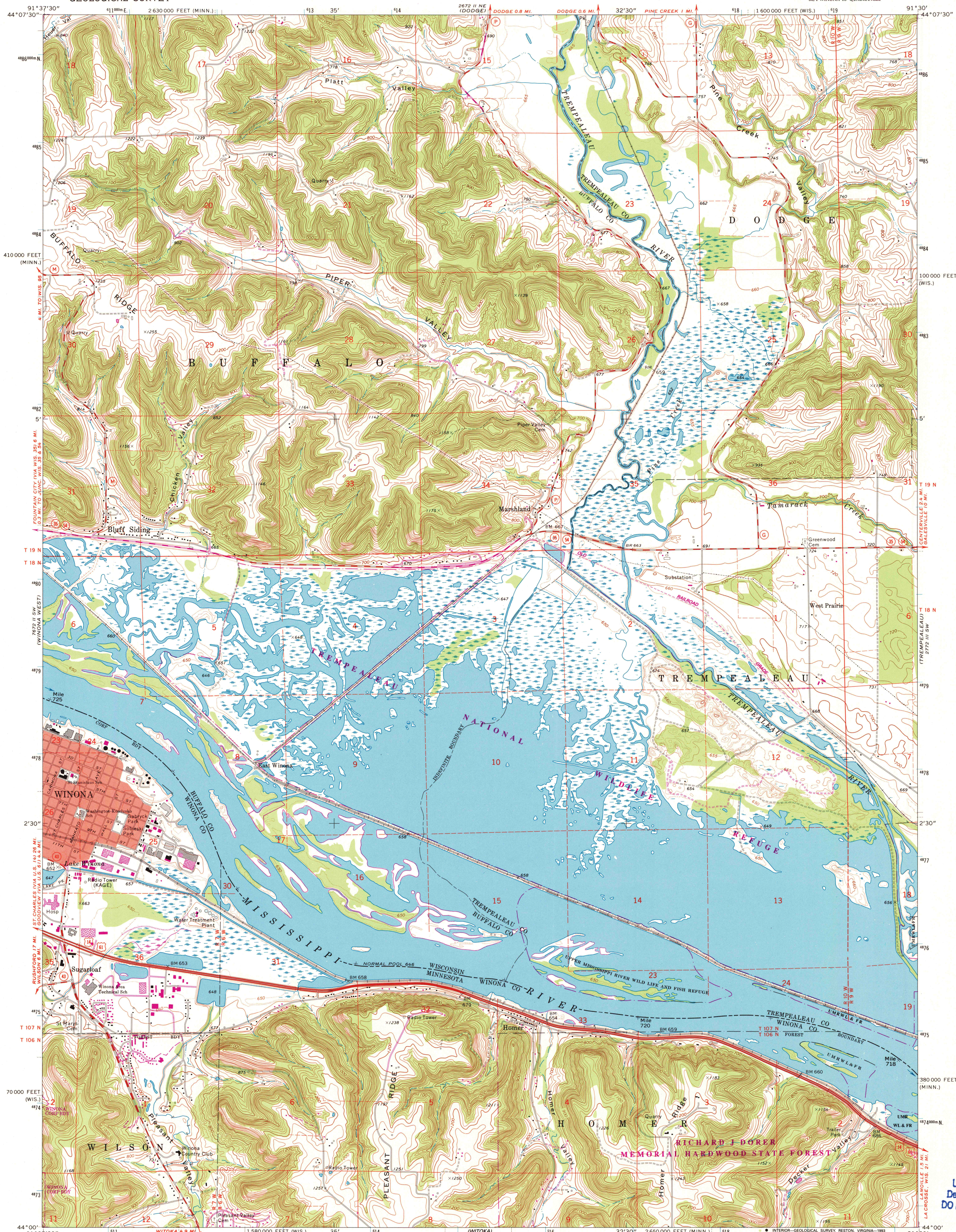
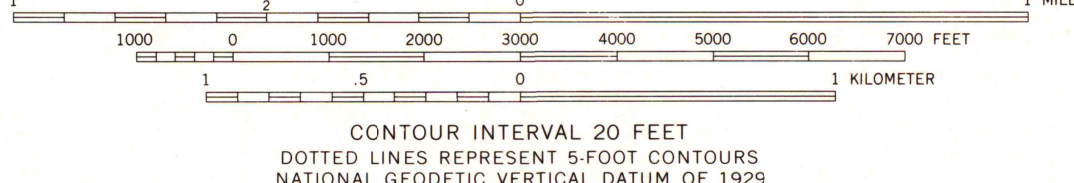
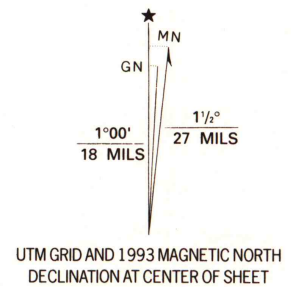


UNITED STATES
DEPARTMENT OF THE INTERIOR
GEOLOGICAL SURVEY

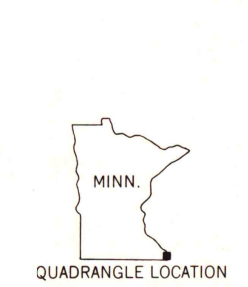
WINONA EAST QUADRANGLE
MINNESOTA-WISCONSIN
7.5 MINUTE SERIES (TOPOGRAPHIC)
SE/4 WINONA 15' QUADRANGLE



Produced by the United States Geological Survey
Control by USGS and NOS/NOAA
Topography by photogrammetric methods from aerial photographs
taken 1972. Field checked 1972
Projection and 10,000-foot grid ticks: Wisconsin coordinate
system, central zone (Lambert conformal conic)
10,000-foot grid ticks: Wisconsin coordinate
system, central zone and Minnesota coordinate system, south zone
1000-meter Universal Transverse Mercator grid ticks, zone 15, shown in blue
1927 North American Datum (NAD 27)
North American Datum of 1983 (NAD 83) is shown by dashed corner ticks
The values of the shift between NAD 27 and NAD 83 for 7.5-minute
intersections are given in USGS Bulletin 1875
There may be private holdings within the boundaries of
the National or State reservations shown on this map
Red tint indicates area in which only landmark buildings are shown
Fine red dashed lines indicate selected fence and field lines where
generally visible on aerial photographs. This information is unchecked



THIS MAP COMPLIES WITH NATIONAL MAP ACCURACY STANDARDS
FOR SALE BY U.S. GEOLOGICAL SURVEY, DENVER, COLORADO 80225, OR RESTON, VIRGINIA 22092
AND WISCONSIN GEOLOGICAL AND NATURAL HISTORY SURVEY, MADISON, WISCONSIN 53706
A FOLDER DESCRIBING TOPOGRAPHIC MAPS AND SYMBOLS IS AVAILABLE ON REQUEST



ROAD CLASSIFICATION
Primary highway, hard surface
Secondary highway, hard surface
Light-duty road, hard or improved surface
Unimproved road
Interstate Route
U.S. Route
State Route

WINONA EAST, MINN.-WIS.
SE/4 WINONA 15' QUADRANGLE
44091-A5-TF-024

1972
REVISED 1993
DMA 2672 II SE-SERIES V872

Revisions shown in purple and woodland compiled in
cooperation with State of Minnesota agencies from
aerial photographs taken 1991 and other sources
Contours not revised. This information not field checked
Map edited 1993

U.S. Regional
Depository Copy
DO NOT DISCARD

A.H. ROBINSON
MAP LIBRARY
DEC 16 1993

University of Wisconsin
Madison

1993
copy
1-1