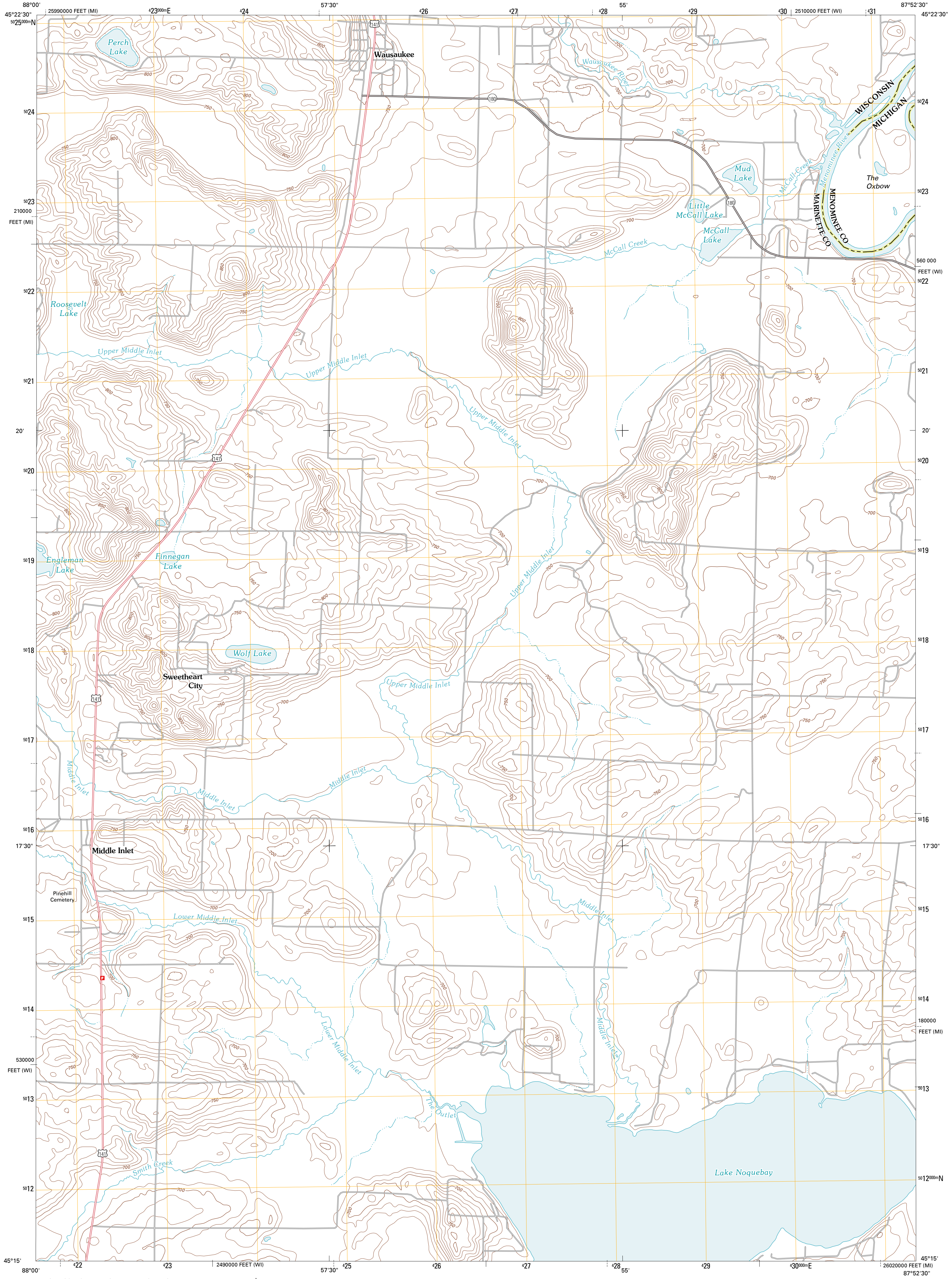




U.S. DEPARTMENT OF THE INTERIOR
U. S. GEOLOGICAL SURVEY



WAUSAUKEE SOUTH QUADRANGLE
WISCONSIN-MICHIGAN
7.5-MINUTE SERIES

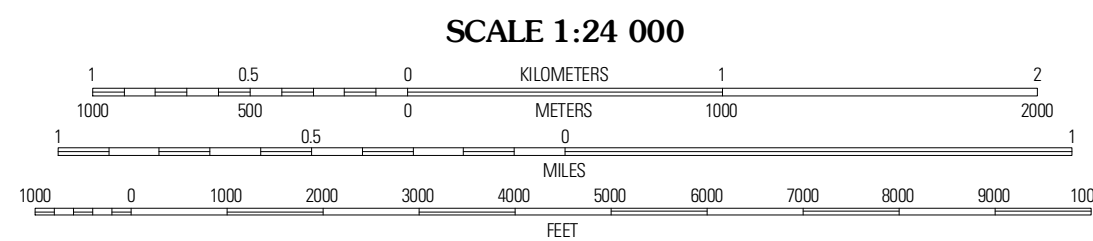


Produced by the United States Geological Survey
North American Datum of 1983 (NAD83)
World Geodetic System of 1984 (WGS84). Projection and
1 000-meter grid: Universal Transverse Mercator, Zone 16T
10 000-foot ticks: Wisconsin Coordinate System of 1983
(central zone), Michigan Coordinate System of 1983 (north
zone)

Imagery.....NAIP, July 2008
Roads.....©2006-2010 Tele Atlas
Names.....CNS, 2010
Hydrography.....National Hydrography Dataset, 2008
Contours.....National Elevation Dataset, 1998
Boundaries.....Census, IBWC, IBC, USGS, 1972 - 2010

UTM GRID AND 2011 MAGNETIC NORTH
DECLINATION AT CENTER OF SHEET

U.S. National Grid 100,000-m Square ID	DR
Grid Zone Designation 16T	



SCALE 1:24 000
CONTOUR INTERVAL 10 FEET
NORTH AMERICAN VERTICAL DATUM OF 1988
This map was produced to conform with version 0.5.10
of the USGS US Topo Product Standard.
A metadata file associated with this product is draft version 0.5.16



QUADRANGLE LOCATION

Adelstein	Wausaukee North	Resort Lake
Mount Tom	Wausaukee South	Bear Point
Crittiz	Loomis	Porterfield

ADJOINING 7.5' QUADRANGLES

ROAD CLASSIFICATION

Interstate Route	State Route
US Route	Local Road
Ramp	4WD

Legend symbols for Interstate Route, US Route, State Route, Local Road, Ramp, and 4WD.

WAUSAUKEE SOUTH, WI-MI
2011