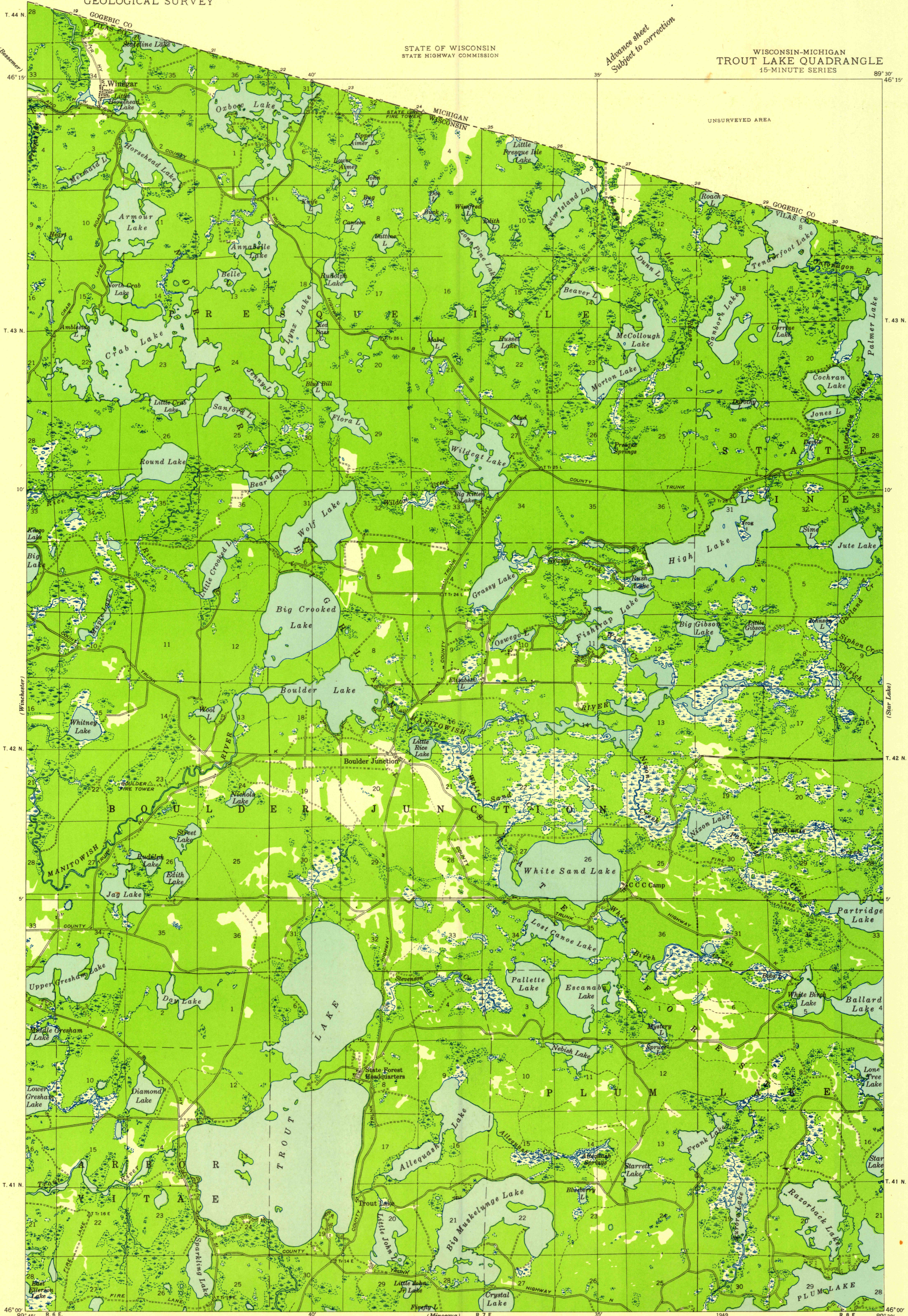


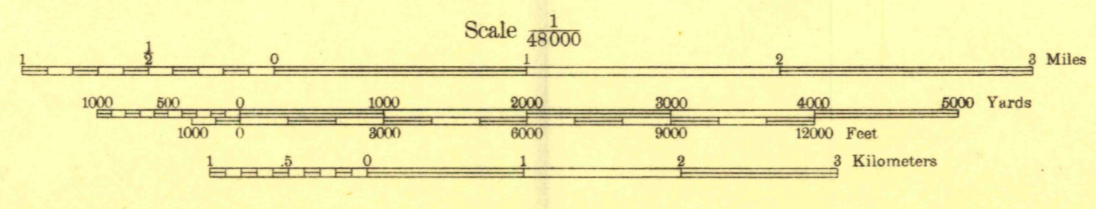
Advance sheet
Subject to correction

FILE COPY



Glenn S. Smith, Division Engineer
Compiled by Geological Survey
from aerial photographs
Field examination in 1938

TRUE NORTH
MAGNETIC NORTH
APPROXIMATE MEAN
DECLINATION, 1938



Polygonic projection. 1927 North American datum
+ Recovered section corners

TROUT LAKE, WIS.-MICH.
N 4600-W 8930/15

FILE COPY