

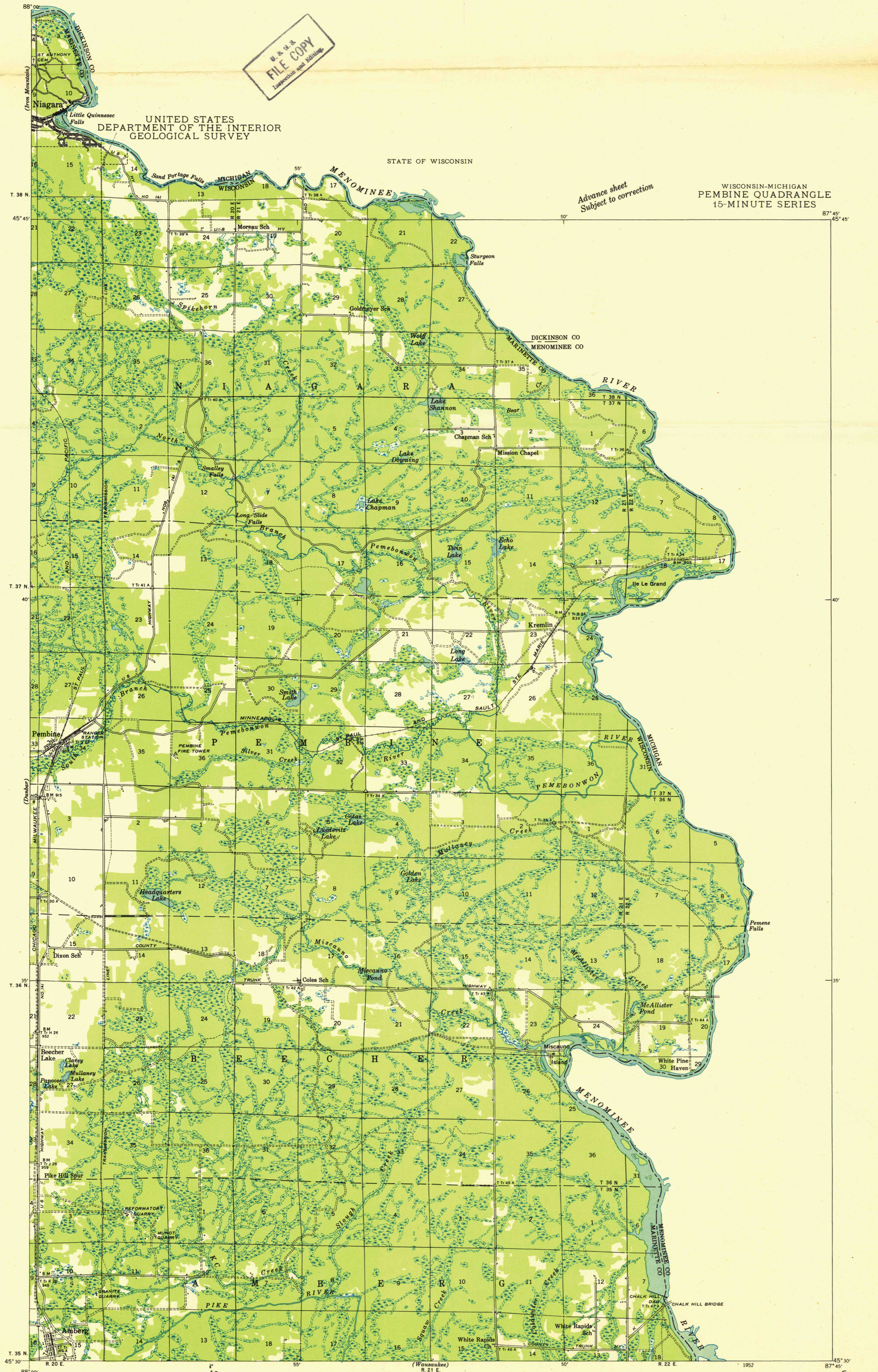
U. S. G. S.  
FILE COPY  
Inspection and Editing

UNITED STATES  
DEPARTMENT OF THE INTERIOR  
GEOLOGICAL SURVEY

STATE OF WISCONSIN

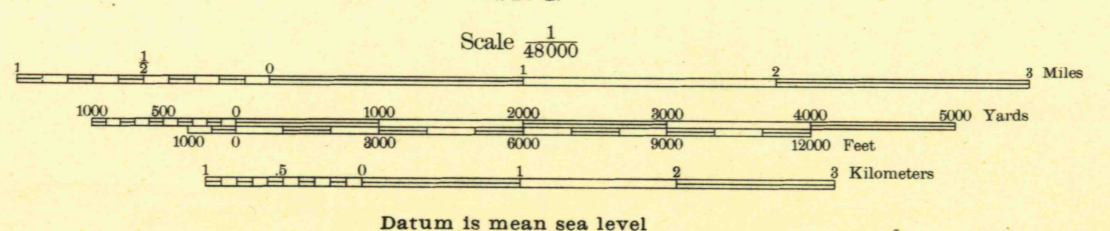
Advance sheet  
Subject to correction

WISCONSIN-MICHIGAN  
PEMBINE QUADRANGLE  
15-MINUTE SERIES



Compiled by Geological Survey  
from aerial photographs  
Field examination in 1939

TRUE NORTH  
MAGNETIC NORTH  
APPROXIMATE MEAN  
DECLINATION, 1939



Polyconic projection. 1927 North American datum

U. S. G. S.  
FILE COPY  
Inspection and Editing

PEMBINE, WIS.-MICH.  
1939  
N4530-W8745/15

FOR SALE BY U. S. GEOLOGICAL SURVEY, WASHINGTON 25, D. C.  
A FOLDER DESCRIBING TOPOGRAPHIC MAPS AND SYMBOLS IS AVAILABLE ON REQUEST

MAR 13 1952

2130