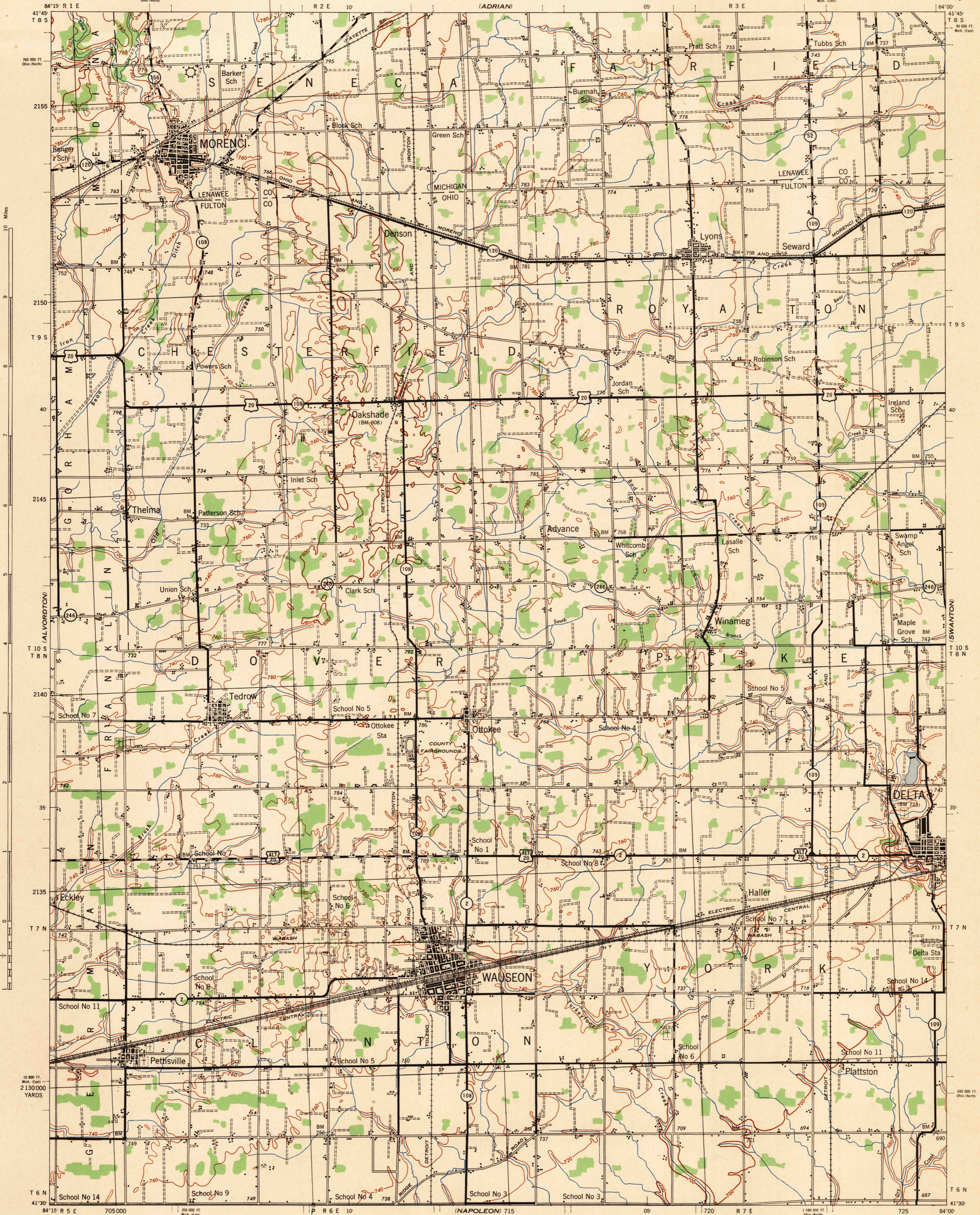


(BLISSFIELD)



First Edition (AMS 1), 1943.
 Prepared under the direction of the Chief of Engineers, U. S. Army, by the
 Army Map Service, East St. Louis Unit, 1942.
 Based on U. S. G. S. quadrangle, Wauseon, 1:62,500 (1913).
 Horizontal control by U. S. C. & G. S. and U. S. G. S.
 Vertical control by U. S. C. & G. S.
 Surveyed in cooperation with the States of Ohio and Michigan, 1911.
 Revised from single lens vertical aerial photographs.
 Aerial photography, A. A. Department of Agriculture, 1939-40.
 Polyconic Projection, North American Datum.

Scale 1:62,500

ARMY MAP SERVICE, U. S. ARMY, WASHINGTON, D. C. 10977
1944

(MCCLURE)

ROAD CLASSIFICATION 1942

Dependable hard-surface, heavy-duty road. U. S. Route State Route Dirt road 3-LANE 4-LANE

Secondary, hard-surface, all-weather road. 3-LANE 4-LANE

More than two lanes indicated by note along road with tick of point of change.

CONTOUR INTERVAL 20 FEET
 DATUM IS MEAN SEA LEVEL

FIVE THOUSAND YARD GRID COMPUTED FROM GRID SYSTEM FOR PROGRESSIVE MAPS
 IN THE U. S. ZONE 18° U. S. C. & G. S. SPECIAL PUBLICATION NO. 83

THE LAST THREE DIGITS OF THE GRID NUMBERS ARE OMITTED

THE STATE GRIDS ARE INDICATED FOR OHIO, ZONE NORTH BY — Ticks for Michigan
 BY — Ticks outside the neat line at 10,000 FOOT INTERVALS

NOTE: OFFICERS USING THIS MAP WILL MARK HEREON CORRECTIONS AND ADDITIONS WHICH COME
 TO THEIR ATTENTION AND MAIL DIRECT TO THE CHIEF OF ENGINEERS, WASHINGTON, D. C.

Use diagram only to obtain numerical values.
 To determine magnetic north line, connect the
 pivot point "P" on the south edge of the map
 with the value of the angle between GRID
 NORTH and MAGNETIC NORTH, as shown on
 the degree scale at the north edge of the map.

APPROXIMATE MEAN DECLINATION 1944
108° CENTER OF SHEET
MAGNETIC NORTH 1° DEGREES

WAUSEON, OHIO-MICH.
N4130-W8400/15

HISTORICAL FILES

(DO NOT REMOVE)