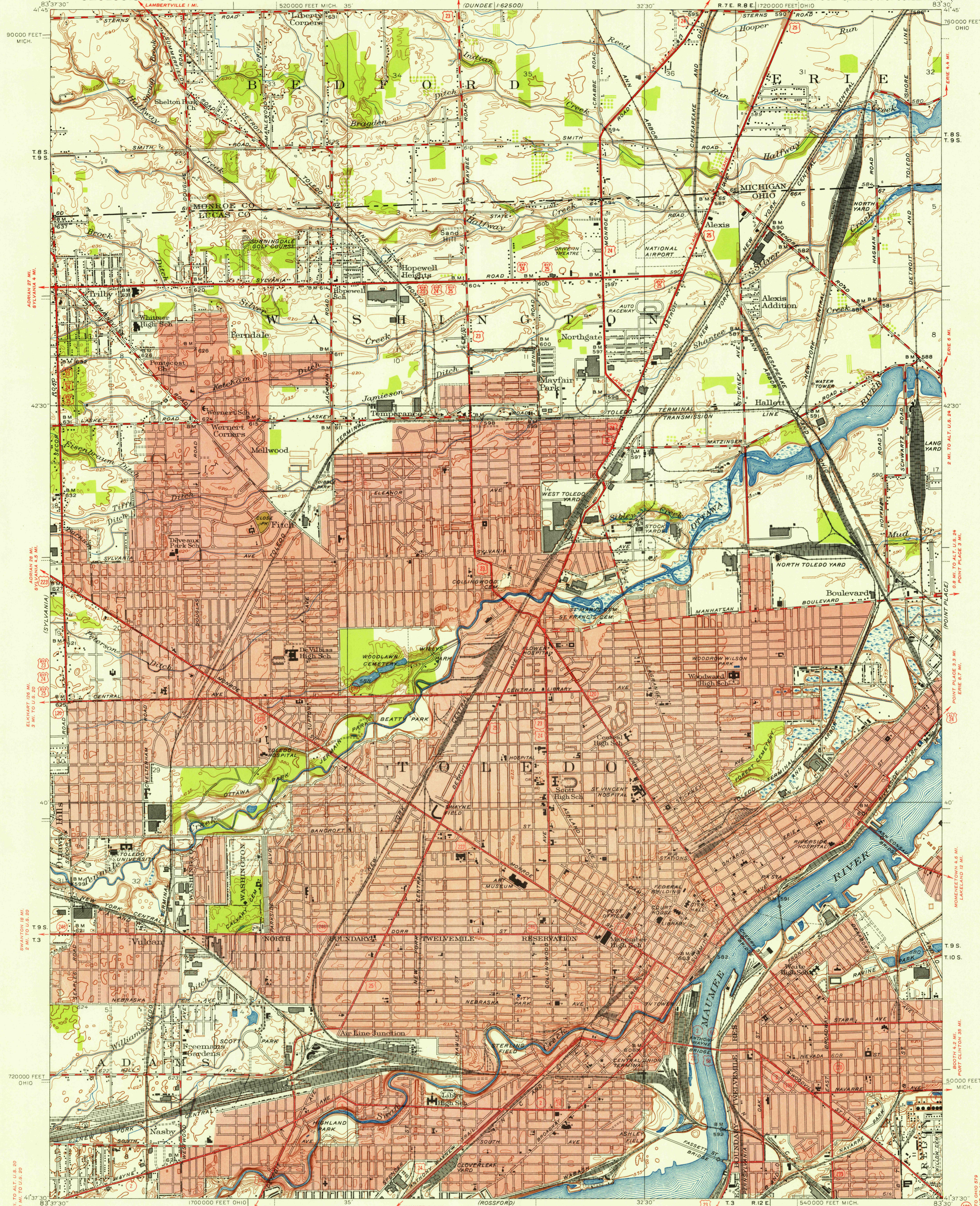
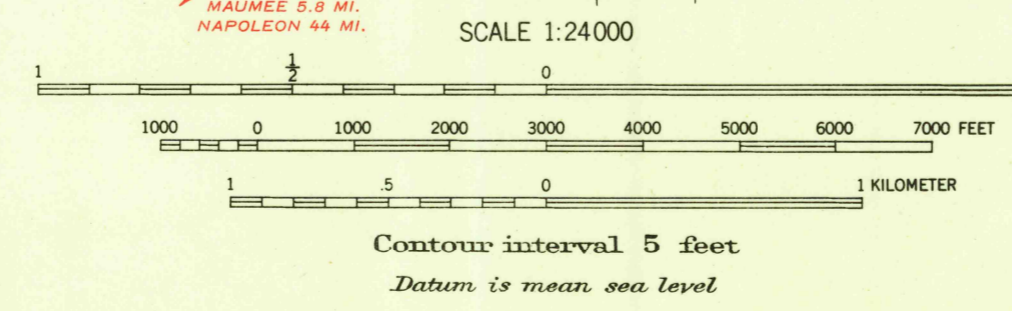


UNITED STATES
DEPARTMENT OF THE INTERIOR
GEOLOGICAL SURVEY

TOLEDO QUADRANGLE
OHIO-MICHIGAN
7.5-MINUTE SERIES (TOPOGRAPHIC)



Mapped, edited, and published by the Geological Survey
Control by USGS, USCGS and USCE
Culture and drainage in part compiled from aerial photographs
Surveyed in 1934. Revised in 1952
Polyconic projection, 1927 North American datum
10000-foot grids based on Ohio coordinate system, north zone
and Michigan coordinate system, east zone
Red tint indicates areas in which only
landmark buildings are shown



ROAD CLASSIFICATION

Heavy-duty	4 LANE 16 LANE	Light-duty
Medium-duty	4 LANE 16 LANE	Unimproved dirt
U.S. Route		State Route

USGS
Historical File
Topographic Division

USGS Library
Reston, VA.
Topo Archive

TOLEDO, OHIO-MICH.
N41375-W8330/75

FOR SALE BY U. S. GEOLOGICAL SURVEY, WASHINGTON 25, D. C.
A FOLDER DESCRIBING TOPOGRAPHIC MAPS AND SYMBOLS IS AVAILABLE ON REQUEST