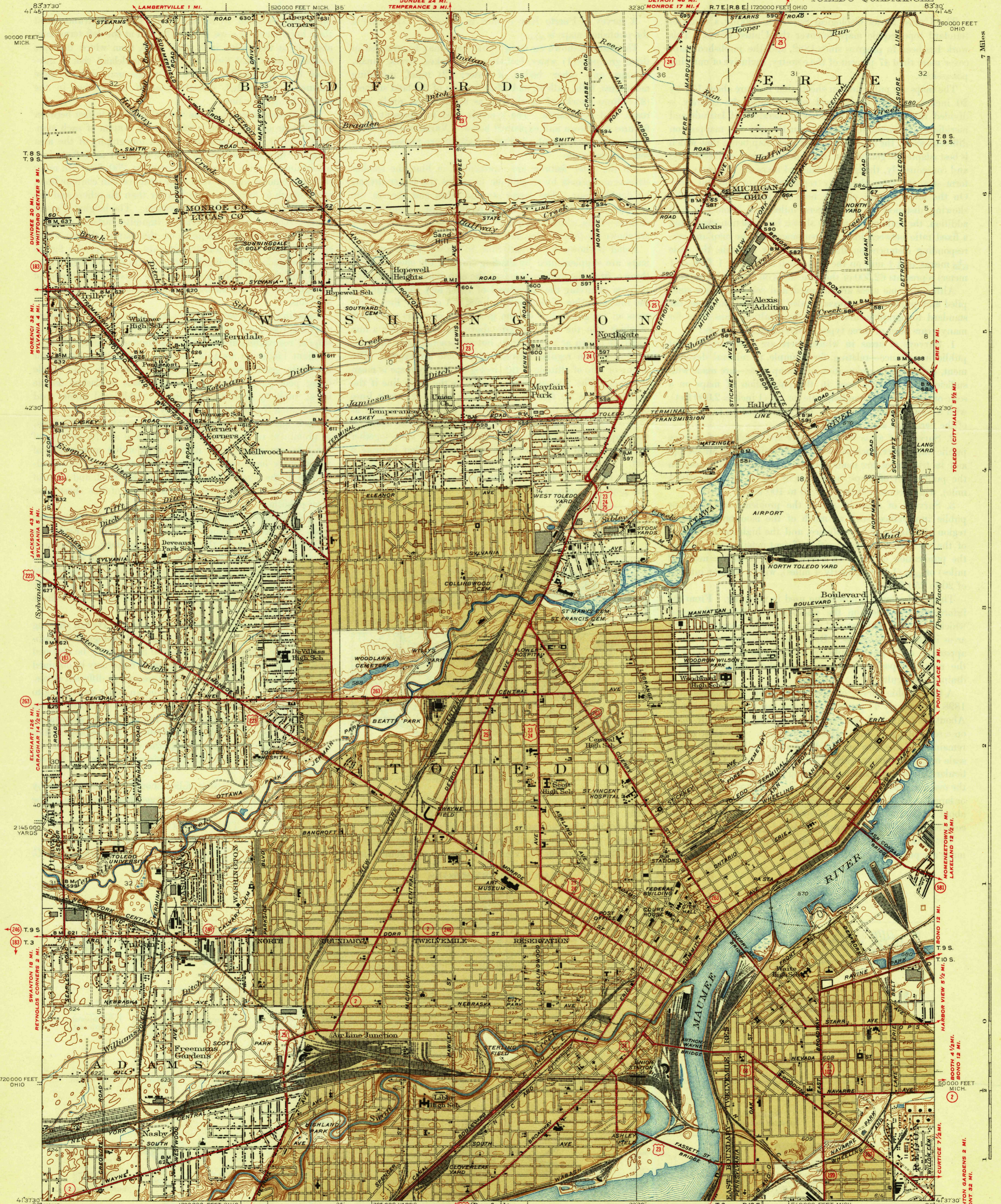


UNITED STATES  
DEPARTMENT OF THE INTERIOR  
GEOLOGICAL SURVEY

MONROE 15 1/2 MI. OHIO-MICHIGAN  
ERIE 5 1/2 MI. TOLEDO QUADRANGLE



Topography by H.A. Bean, J.H. Saxon, City of Toledo, and Lucas County Culture and drainage in part compiled from aerial photographs Surveyed in 1934  
JOHNSTON CORNERS 2 MI.  
SWANTON 14 MI.  
WATERVILLE 18 1/2 MI.

Scale 1:50,000  
1 Mile  
1 Kilometer  
Contour interval 5 feet  
Datum is mean sea level

U.S.G.S. 23 68  
U.S.G.S. CITY OF TOLEDO LUCAS CO.  
POLYCONIC PROJECTION, 1927 NORTH AMERICAN DATUM  
5000 YARD GRID BASED ON U.S. ZONE SYSTEM B  
10000 FOOT GRID BASED ON OHIO (NORTH) AND MICHIGAN (EAST) RECTANGULAR COORDINATE SYSTEMS  
MOLINE 5 MI.  
STONEY RIDGE 8 MI.

**HISTORICAL FILES**

(DO NOT REMOVE)

TOLEDO, OHIO-MICHIGAN  
Edition of 1938  
**FILE COPY**  
Not to be Removed From Files