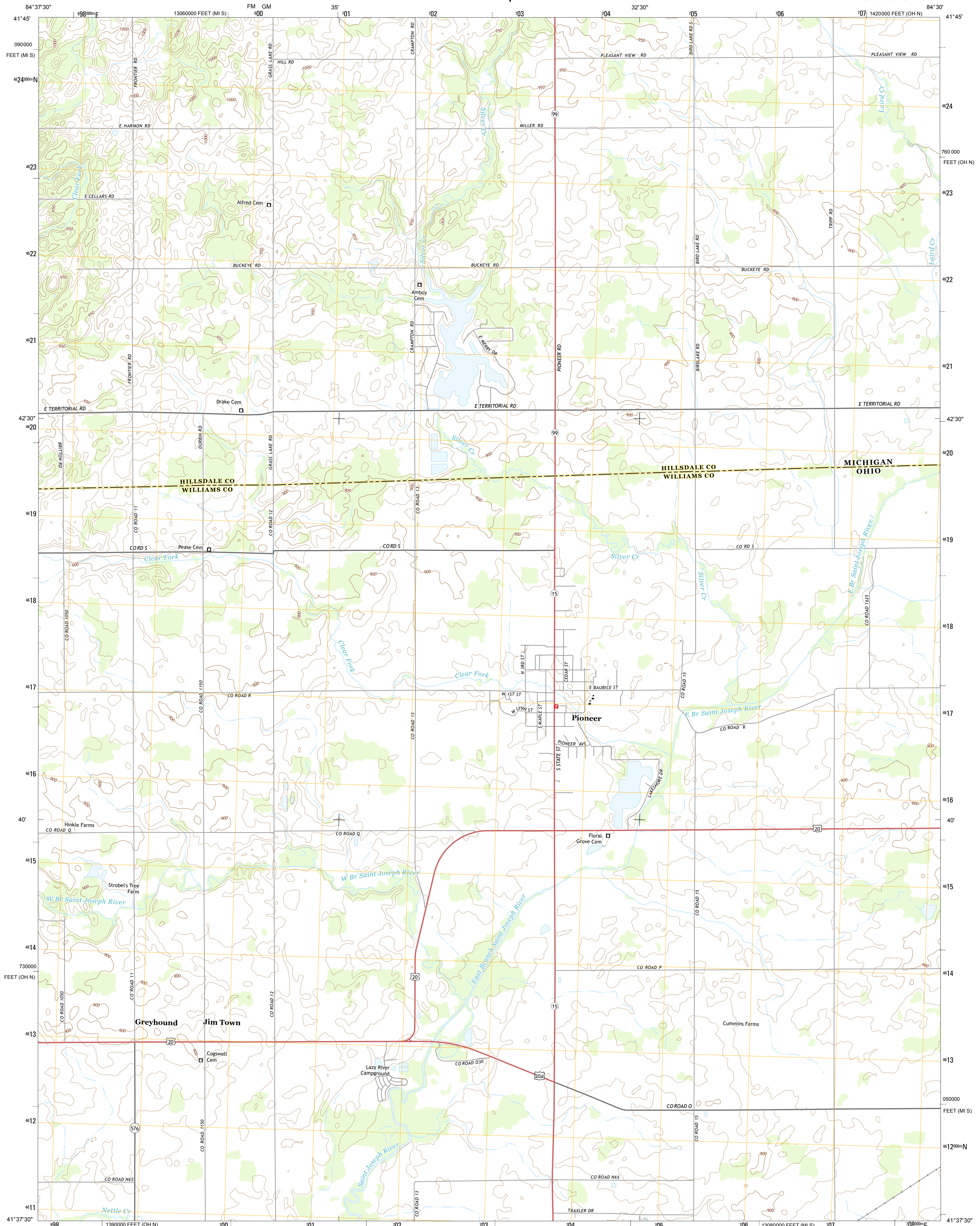




U.S. DEPARTMENT OF THE INTERIOR
U. S. GEOLOGICAL SURVEY



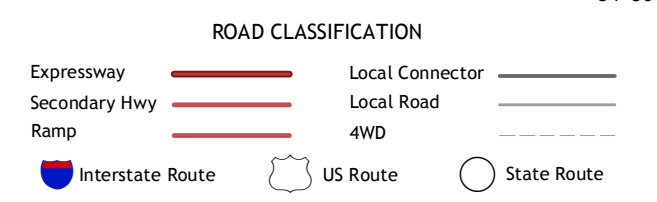
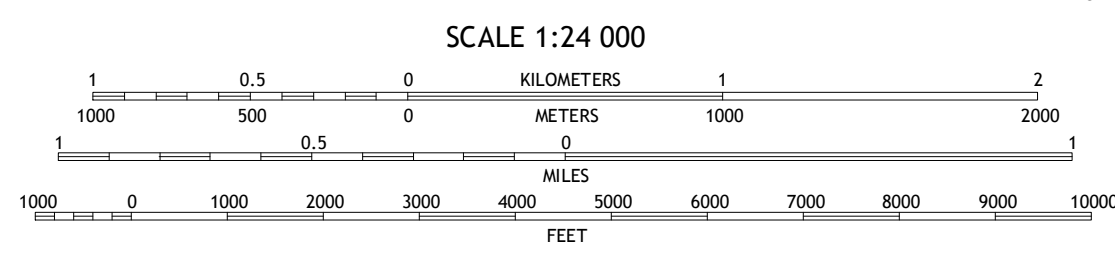
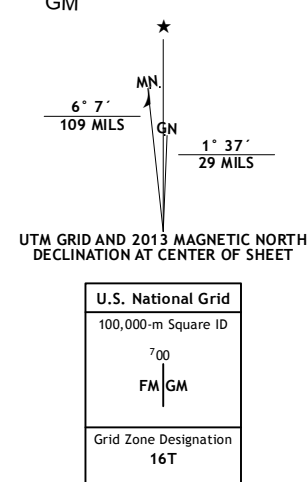
PIONEER QUADRANGLE
OHIO-MICHIGAN
7.5-MINUTE SERIES



Produced by the United States Geological Survey
North American Datum of 1983 (NAD83)
World Geodetic System of 1984 (WGS84), Projection and
1 000-meter grid: Universal Transverse Mercator, Zone 16T
10 000-foot ticks: Ohio Coordinate System of 1983 (north zone),
Michigan Coordinate System of 1983 (south zone)

This map is not a legal document. Boundaries may be
generalized for this map scale. Private lands within government
reservations may not be shown. Obtain permission before
entering private lands.

Imagery: NADIP, August 2011 - September 2011
Roads: 2006-2013 TomTom
Names: GNIS, 2013
Hydrography: National Hydrography Dataset, 2011
Contours: National Elevation Dataset, 2010
Boundaries: Census, IBWC, IBC, USGS, 1972 - 2012
Public Land Survey System: BLM, 2013



ADJOINING 7.5 QUADRANGLES		
Reading	Frontier	Pittsford
Nettle Lake	Pioneer	Alvordton
Blakeslee	Montpelier	West Unity

CONTOUR INTERVAL 10 FEET
NORTH AMERICAN VERTICAL DATUM OF 1988
This map was produced to conform with the
National Geospatial Program US Topo Product Standard, 2011.
A metadata file associated with this product is draft version 0.6.15

PIONEER, OH-MI
2013

