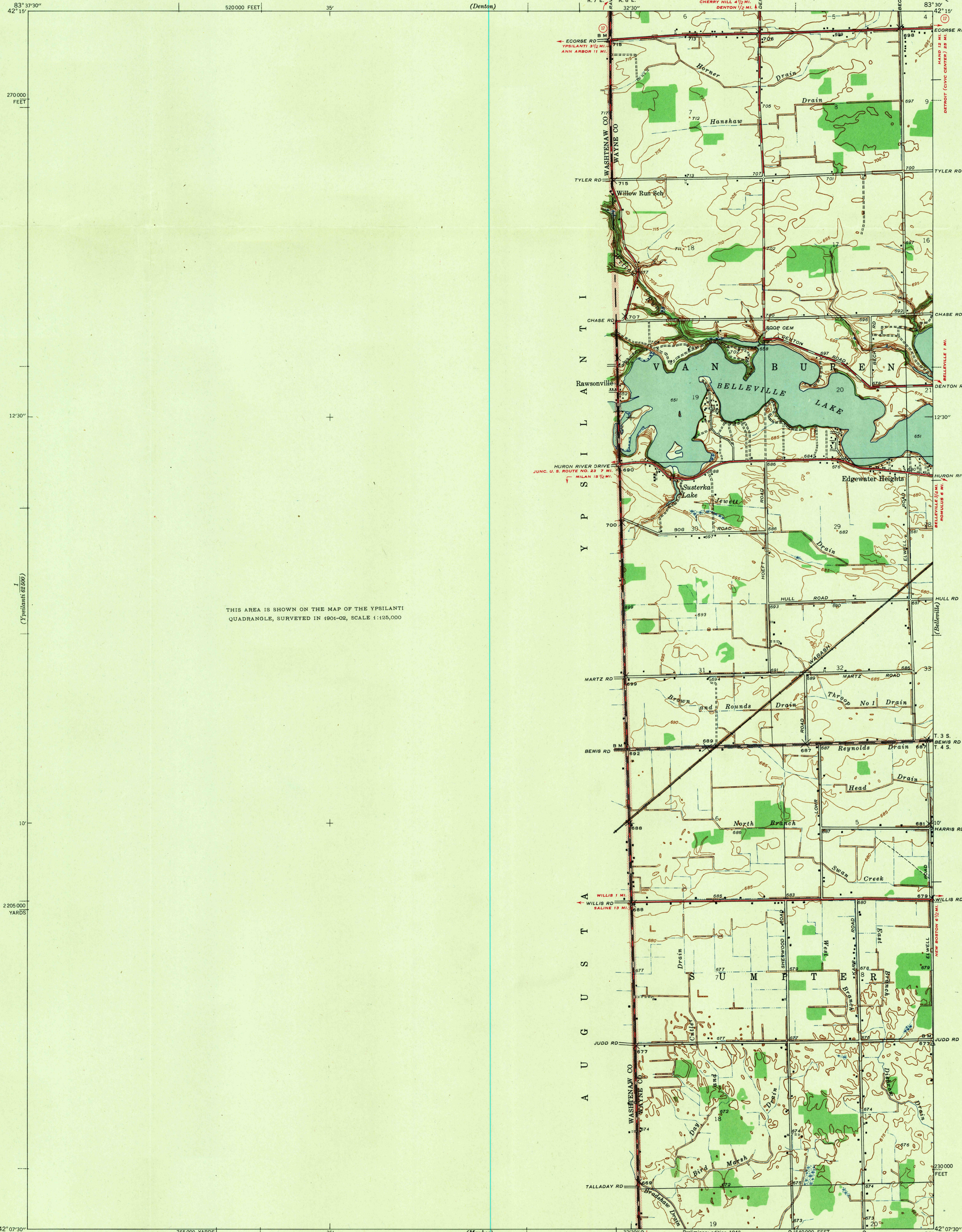


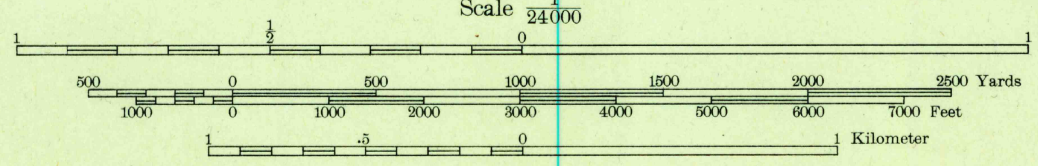
U. S. G. S.
FILE COPY
Inspection and Filing

(South Lagoon)
82500



THIS AREA IS SHOWN ON THE MAP OF THE YPSILANTI
QUADRANGLE, SURVEYED IN 1901-02, SCALE 1:125,000

Topography by W. E. Baird, G. M. Perham,
P. L. Sampson, A. W. Thomas, and F. W. Thorstenson
Surveyed in 1940



Contour interval 5 feet
Datum is mean sea level

ROUTES USUALLY TRAVELED
HARD IMPERVIOUS SURFACES
OTHER SURFACE IMPROVEMENTS
U. S. ROUTE 1948 STATE ROUTE

Preliminary edition 1942
Polyconic projection. 1927 North American datum
5,000 yard grid based on U. S. zone system, B
10,000 foot grid based on Michigan (East)
rectangular coordinate system

YPSILANTI EAST, MICH.

N 4207.5-W 8330/7.5

JUN 19 1942

USGS
Historical File
Topographic Division