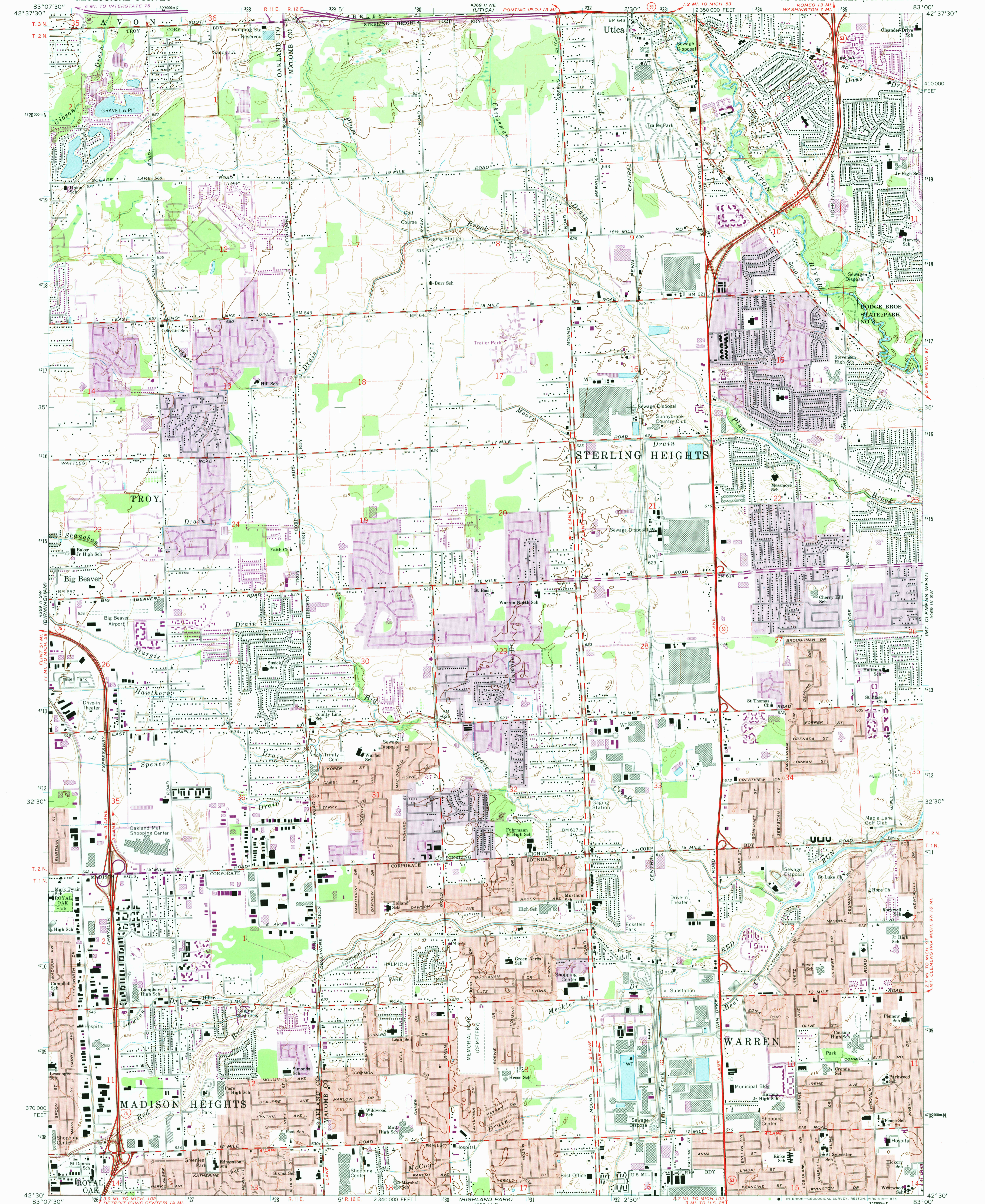
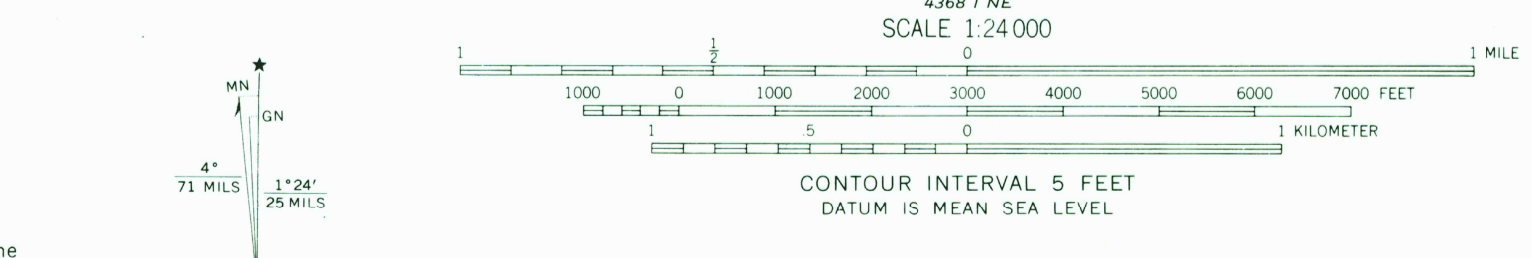


UNITED STATES
DEPARTMENT OF THE INTERIOR
GEOLOGICAL SURVEY

WARREN QUADRANGLE
MICHIGAN
7.5 MINUTE SERIES (TOPOGRAPHIC)



Mapped, edited, and published by the Geological Survey in cooperation with State of Michigan agencies
Control by USGS and USC&GS
Planimetry by photogrammetric methods from aerial photographs
Topography by plane-table surveys 1944. Revised from aerial photographs taken 1967. Field checked 1968
Polyconic projection. 1927 North American datum
10,000-foot grid based on Michigan coordinate system, south zone
1000-meter Universal Transverse Mercator grid ticks, zone 17, shown in blue
Red tint indicates areas in which only landmark buildings are shown
Fine red dashed lines indicate selected fence and field lines where generally visible on aerial photographs. This information is unchecked



ROAD CLASSIFICATION
Primary highway, all weather, hard surface
Secondary highway, all weather, hard surface
Light-duty road, all weather, improved surface
Unimproved road, fair or dry weather
Interstate Route
State Route

THIS MAP COMPLIES WITH NATIONAL MAP ACCURACY STANDARDS FOR SALE BY U. S. GEOLOGICAL SURVEY, RESTON, VIRGINIA 22092
A FOLDER DESCRIBING TOPOGRAPHIC MAPS AND SYMBOLS IS AVAILABLE ON REQUEST
Revisions shown in purple compiled from aerial photographs taken 1973. This information not field checked
Purple tint indicates extension of urban areas
USGS Historical File Topographic Division
1968 PHOTOREVISED 1973
AMS 4369 II SE—SERIES V862
WARREN, MICH. N4230—W8300/7.5
DEC 10 1974 3250