

Traverse City

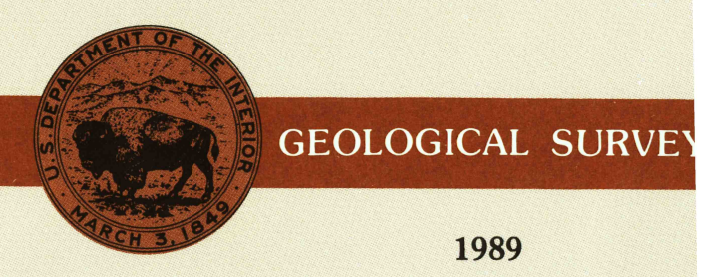
MICHIGAN

1:250 000-scale metric topographic map



1 X 2 DEGREE QUADRANGLE SHOWING

- Contours and elevations in meters
- Highways, roads and other manmade structures
- Water features
- Woodland areas
- Geographic names



Produced by the United States Geological Survey
 Compiled from USGS 1:100 000-scale maps dated 1983
 Supersedes map dated 1954. Map edited 1989

North American Datum of 1983 (NAD 83). Projection and 10 000-meter grid: Universal Transverse Mercator, zone 16. 25 000-meter grid ticks: Michigan coordinate system of 1983 (central zone)

The difference between NAD 83 and North America Datum of 1927 (NAD 27) for 7.5 minute intersections is given in USGS Bulletin 1875

There may be private inholdings within the boundaries of the National or State reservations shown on this map

1989 MAGNETIC DECLINATION FROM TRUE NORTH VARIES FROM 4° (7.1 MILES) WESTERLY FOR THE CENTER OF THE WEST EDGE TO 6° (107 MILES) WESTERLY FOR THE CENTER OF THE EAST EDGE. MEAN ANNUAL CHANGE IS 7.8 WESTERLY

CONTOUR INTERVAL 20 METERS
 NATIONAL GEODETIC DATUM OF 1929
 ELEVATIONS SHOWN TO THE NEAREST METER

THIS MAP COMPLIES WITH NATIONAL MAP ACCURACY STANDARDS

CONVERSION TABLE			ADJOINING MAPS		
Meters	Feet	Feet Meters	1	2	3
1	3.2808	1	3068		
2	6.5617	2	8096		
3	9.8425	3	9144		
4	13.1234	4	12190		
5	16.4042	5	15236		
6	19.6850	6	18282		
7	22.9659	7	21328		
8	26.2467	8	24374		
9	29.5275	9	27420		
10	32.8084	10	30466		

To convert meters to feet multiply by 3.2808
 To convert feet to meters multiply by 0.3048

1	2	3
4		5
6	7	8

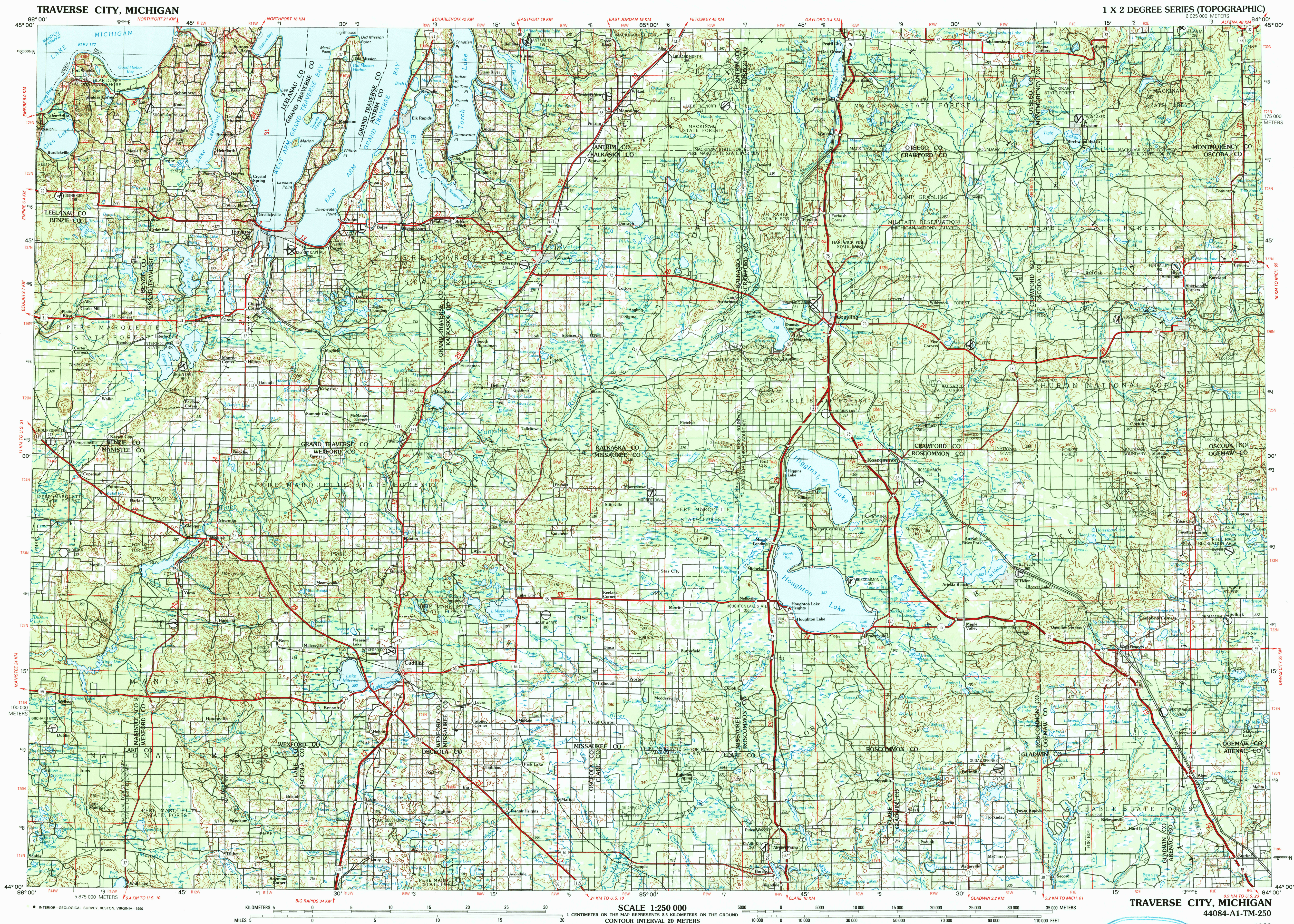
1 Escanaba
 2 Cheboyan
 3 Alpena
 4 Manistowic
 5 Tawas City
 6 Midland
 7 Flint

FOR SALE BY U. S. GEOLOGICAL SURVEY
 DENVER, COLORADO 80225, OR RESTON, VIRGINIA 22092

Topographic Map Symbols

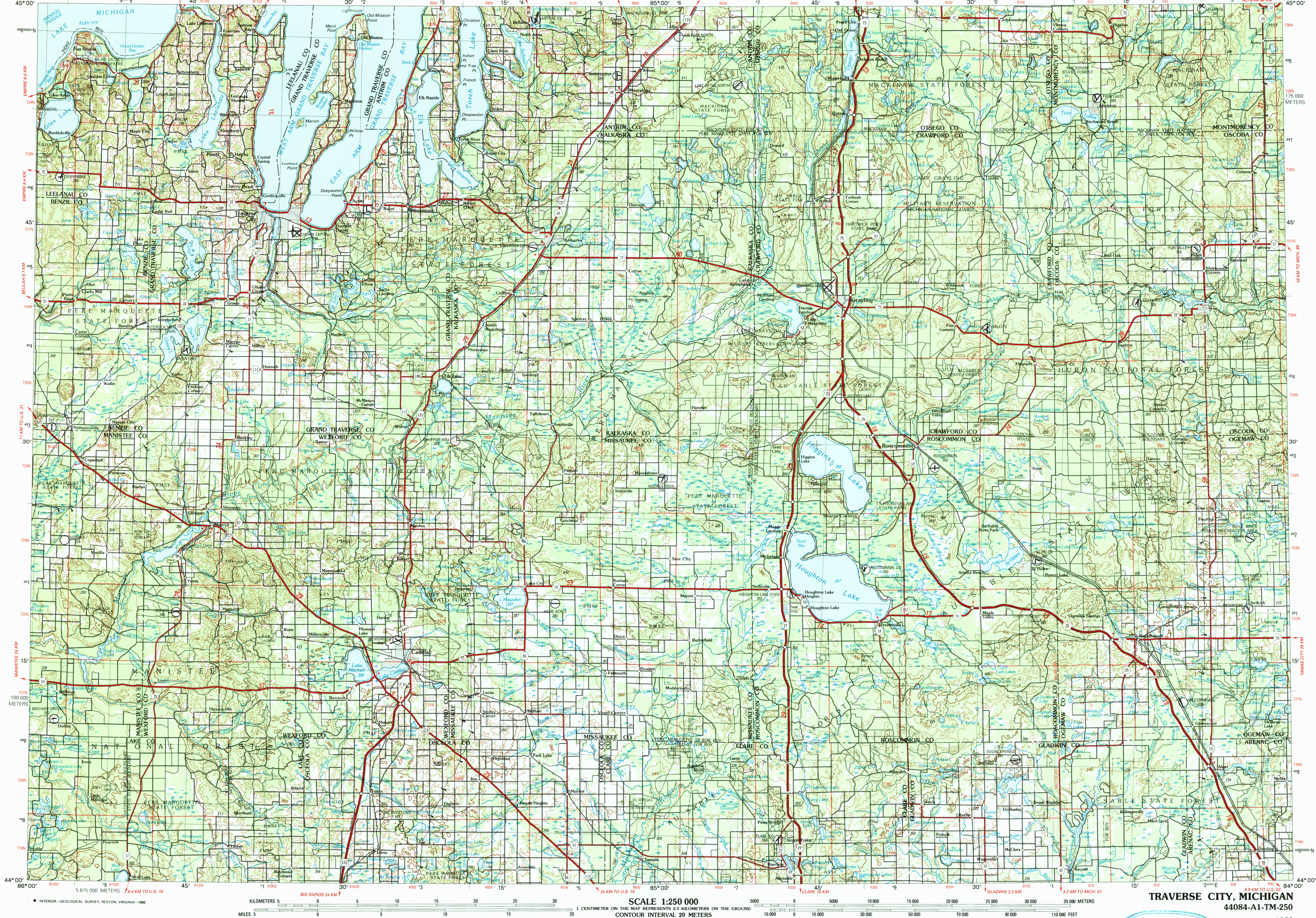
- Dual highway, interchange
- Primary highway, hard surface
- Secondary highway, hard surface
- Light duty road, hard or improved surface
- Other road, trail
- Route marker: Interstate, U. S., State
- Bridge, overpass, underpass
- Tunnel: road, railroad
- Railroad: standard gauge, single, multiple track
- Railroad: narrow gauge, single, multiple track
- Build-up area: locality, elevation
- Airport: runway pattern known, unknown
- National boundary
- State boundary
- County boundary
- National or State reservation boundary
- Land grant boundary
- U. S. public lands survey: range, township (surveyed)
- U. S. public lands survey: range, township (protracted)
- Powerline: pipeline, aboveground, underground
- Dam: landmark feature, landmark building
- Well: water, other, spring, tank
- Cave: mine, quarry, oil, platform
- Landmark area: landmark race track
- Distorted surface: strip mine, lava, sand
- Contours: index, intermediate, supplementary
- Bathymetric contours: index, primary
- Bathymetric contours: intermediate, supplementary
- Stream, lake: perennial, intermittent
- Rapids, large and small, falls, large and small
- Land subject to controlled inundation, marsh, swamp
- Woodland: orchard, vineyard
- Margrove

Figures in red denote approximate distances in kilometers between markers
 A pamphlet describing topographic maps is available on request



TRAVERSE CITY, MICHIGAN

1 X 2 DEGREE SERIES (TOPOGRAPHIC)



SCALE 1:250 000
 1 CENTIMETER ON THE MAP REPRESENTS 2.5 KILOMETERS ON THE GROUND
 CONTOUR INTERVAL 20 METERS

TRAVERSE CITY, MICHIGAN
 44084-A1-TM-250
 1989

