

MULLETT LAKE

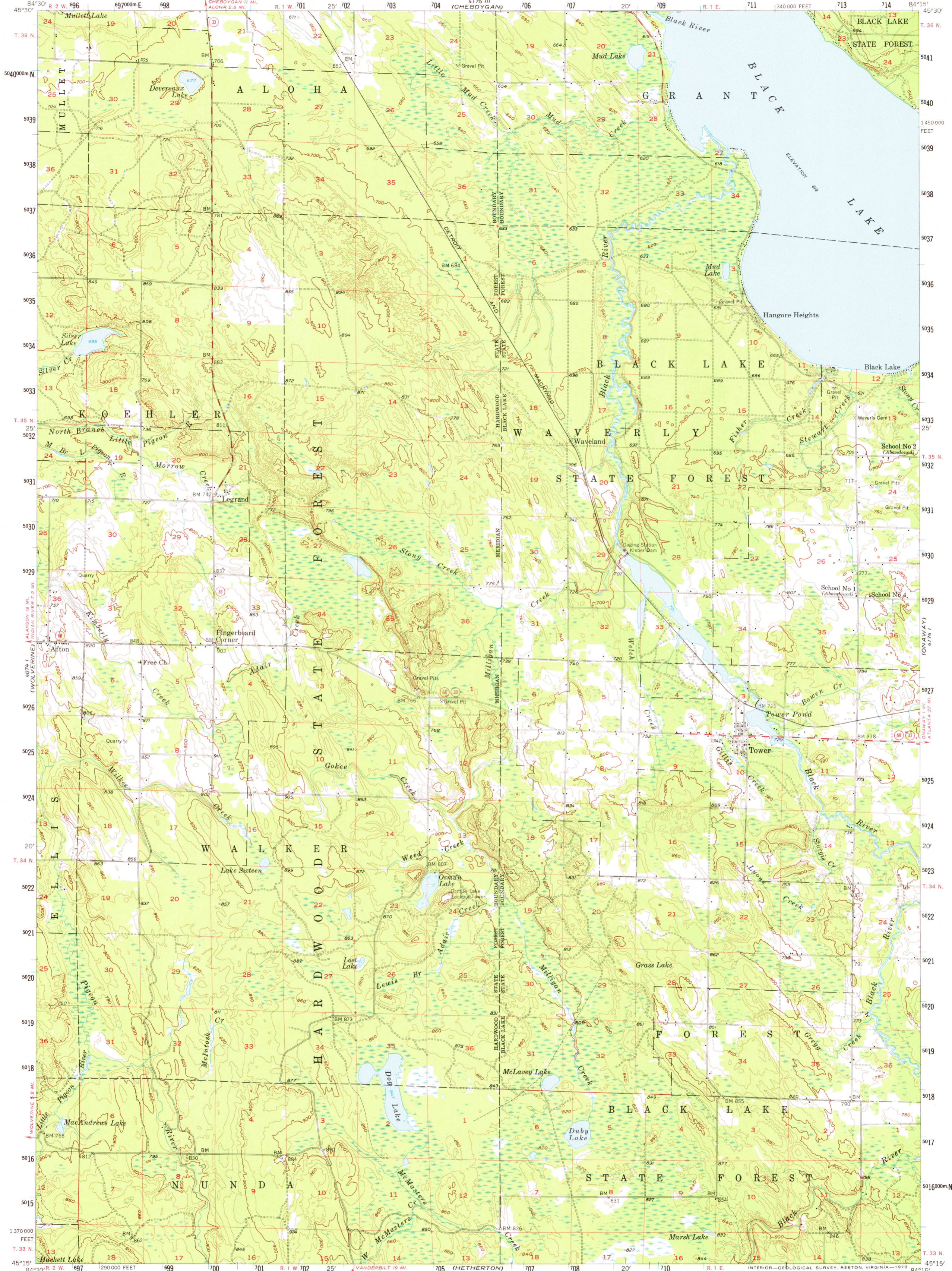
UNITED STATES  
DEPARTMENT OF THE INTERIOR  
GEOLOGICAL SURVEY



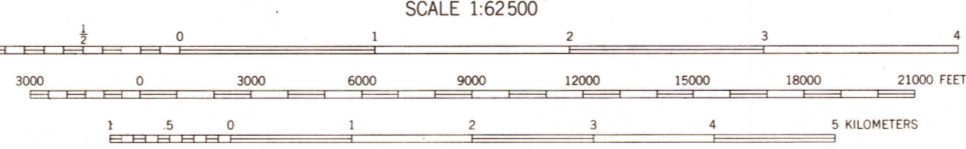
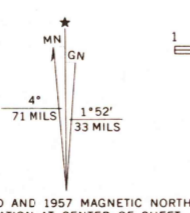
STATE OF MICHIGAN

TOWER QUADRANGLE  
MICHIGAN—CHEBOYGAN CO.  
15 MINUTE SERIES (TOPOGRAPHIC)

GRACE



Mapped, edited, and published by the Geological Survey  
Control by USGS and USC&GS  
Topography from aerial photographs by Kesh plotter  
Aerial photographs taken 1953-1956. Field check 1957  
Polyconic projection. 1927 North American datum  
10,000-foot grid based on Michigan coordinate system, east zone  
1000-meter Universal Transverse Mercator grid ticks,  
zone 16, shown in blue  
There may be private inholdings within the boundaries of  
the National or State reservations shown on this map



CONTOUR INTERVAL 20 FEET  
NATIONAL GEODETIC VERTICAL DATUM OF 1929  
THIS MAP COMPLIES WITH NATIONAL MAP ACCURACY STANDARDS  
FOR SALE BY U.S. GEOLOGICAL SURVEY, RESTON, VIRGINIA 22092  
AND BY THE GEOLOGICAL SURVEY  
MICHIGAN DEPARTMENT OF NATURAL RESOURCES, LANSING, MICHIGAN 48909  
A FOLDER DESCRIBING TOPOGRAPHIC MAPS AND SYMBOLS IS AVAILABLE ON REQUEST

TOWER, MICH.  
N4515-W8415/15  
1957  
AMS 4174 IV—SERIES V762

RETURN TO:  
USGS NMD HISTORICAL MAP ARCHIVES