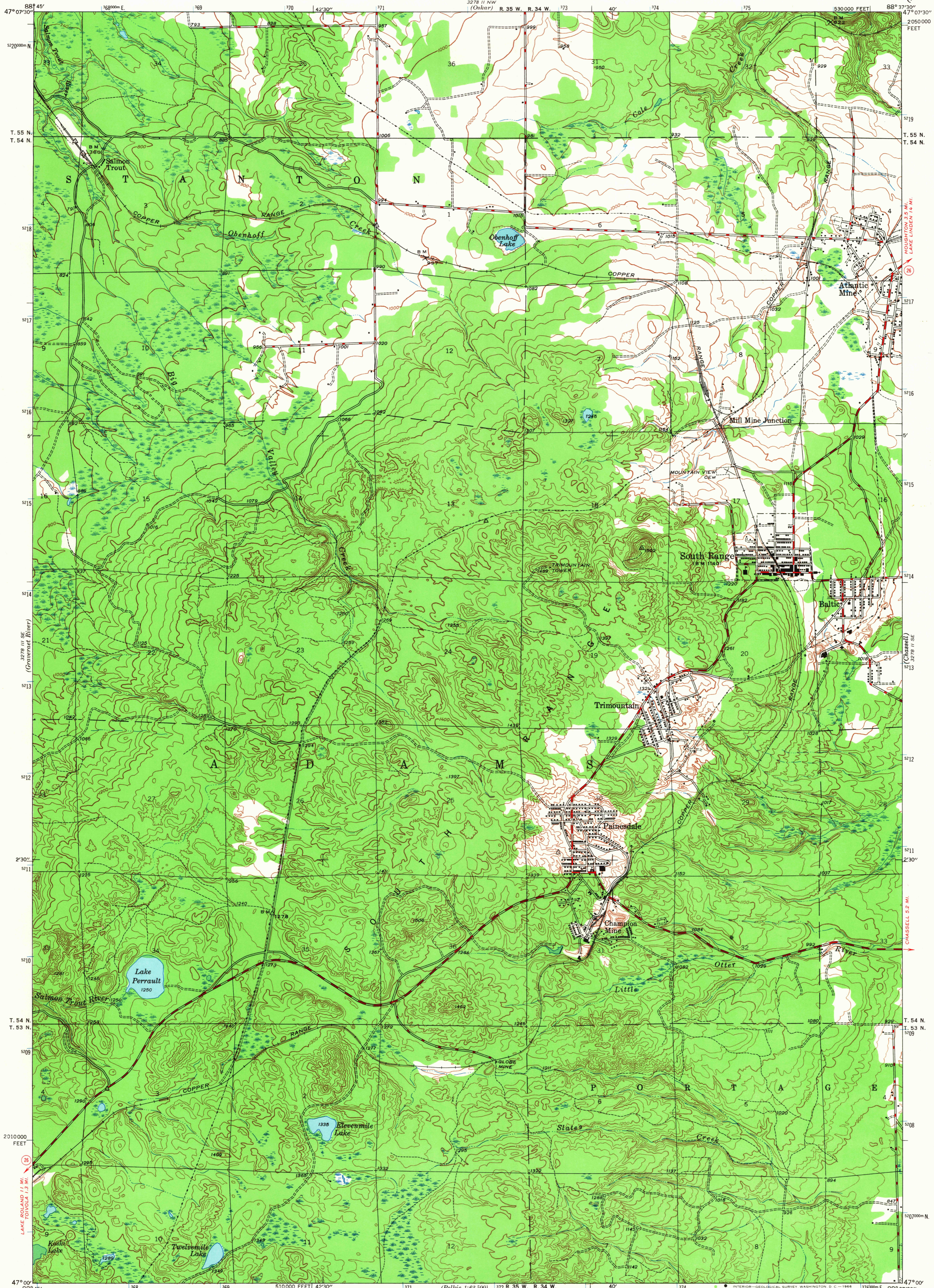


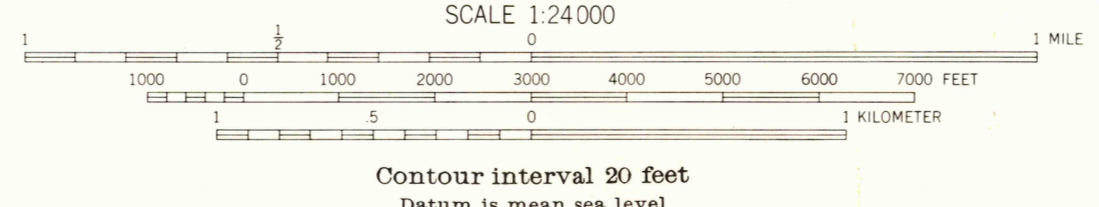
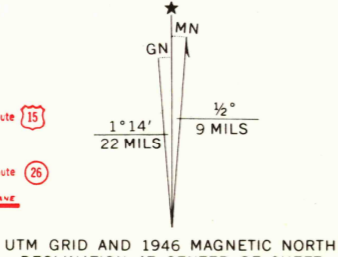
UNITED STATES
DEPARTMENT OF THE INTERIOR
GEOLOGICAL SURVEY

MICHIGAN
(HOUGHTON COUNTY)
SOUTH RANGE QUADRANGLE
7 1/2-MINUTE SERIES



Mapped by the Geological Survey
1946

Red Classification
Deposited hard surface
Heavy-duty road
Secondary hard surface
All weather road
More than two lanes indicated along road with tick at point of change
1947
Dry weather roads
Lower surface, graded
Unsurfaced, graded
Dirt road
State Route
U.S. Route 26
U.S. Route 24



USCS
Historical File
Topographic Division

U.S.G.S.
FILE COPY
TOPOGRAPHIC DIVISION

Polyconic projection. 1927 North American datum
10000 foot grid based on Michigan (West)
rectangular coordinate system
1000-meter Universal Transverse Mercator grid ticks,
zone 16, shown in blue

SOUTH RANGE, MICH.
1946
N 4700-W 8837.5/7.5
AMS 3278 II SW-SERIES V862

FOR SALE BY U.S. GEOLOGICAL SURVEY, WASHINGTON, D. C. 20242
A FOLDER DESCRIBING TOPOGRAPHIC MAPS AND SYMBOLS IS AVAILABLE ON REQUEST

1725
OCT 14 1966