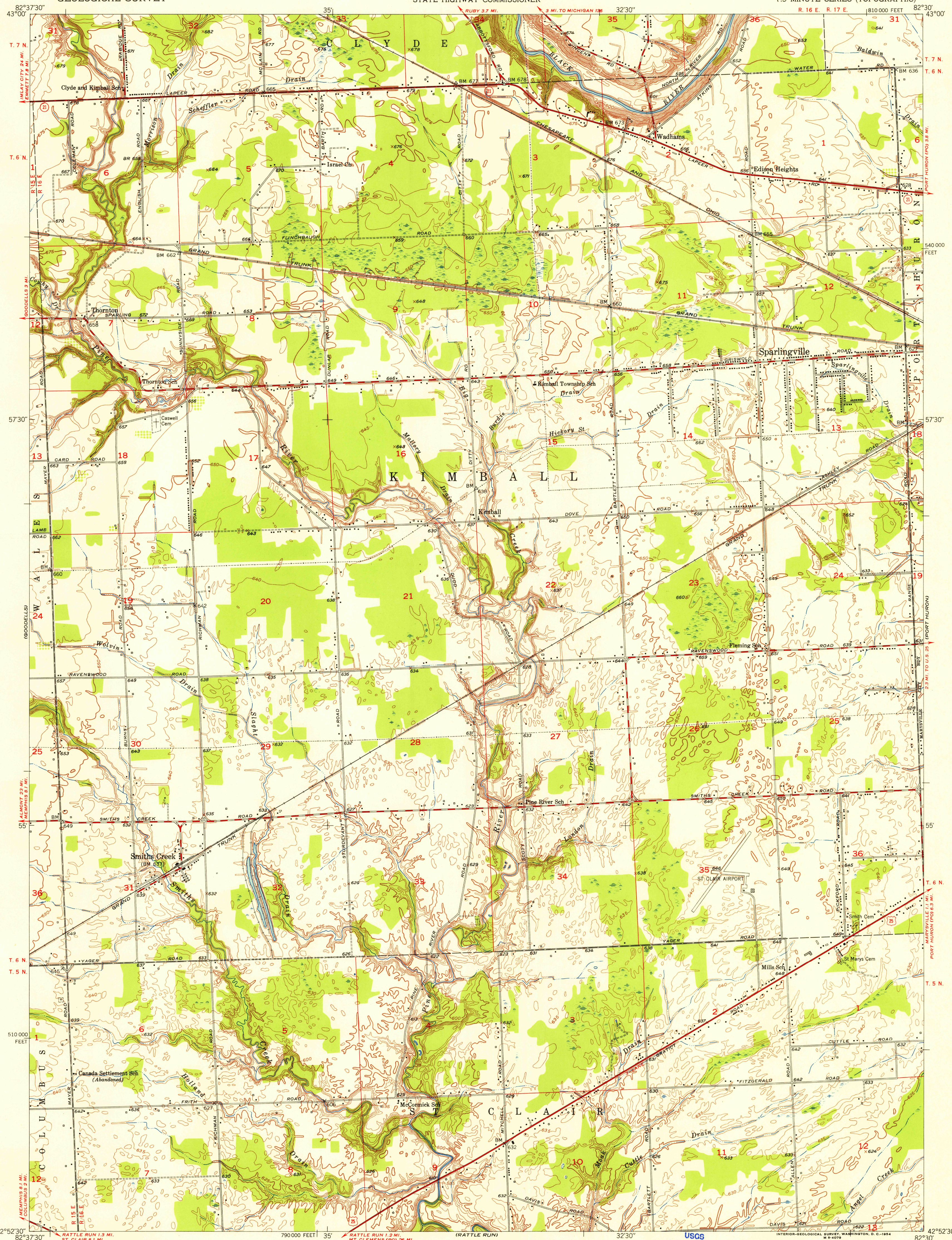
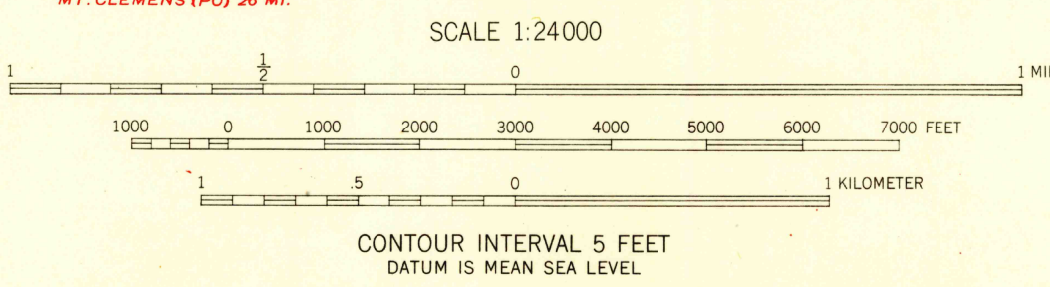
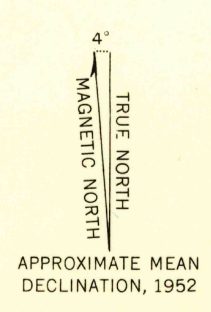


FILE COPY

FILE COPY



Mapped, edited, and published by the Geological Survey
Control by USGS and USC&GS
Culture and drainage in part compiled from aerial photographs
Topography by plane-table surveys 1937. Culture revised 1952
Polyconic projection. 1927 North American datum
10,000-foot grid based on Michigan coordinate system,
east zone



CONTOUR INTERVAL 5 FEET
DATUM IS MEAN SEA LEVEL

USGS
Historical File
Topographic Division

ROAD CLASSIFICATION	
Heavy-duty	4 LANE 16 LANE Light-duty
Medium-duty	2 LANE 16 LANE Unimproved dirt
U.S. Route	State Route



SMITHS CREEK, MICH.
N4252.5-W8230/7.5

1952

THIS MAP COMPLIES WITH NATIONAL MAP ACCURACY STANDARDS
FOR SALE BY U.S. GEOLOGICAL SURVEY, WASHINGTON 25, D. C.
A FOLDER DESCRIBING TOPOGRAPHIC MAPS AND SYMBOLS IS AVAILABLE ON REQUEST