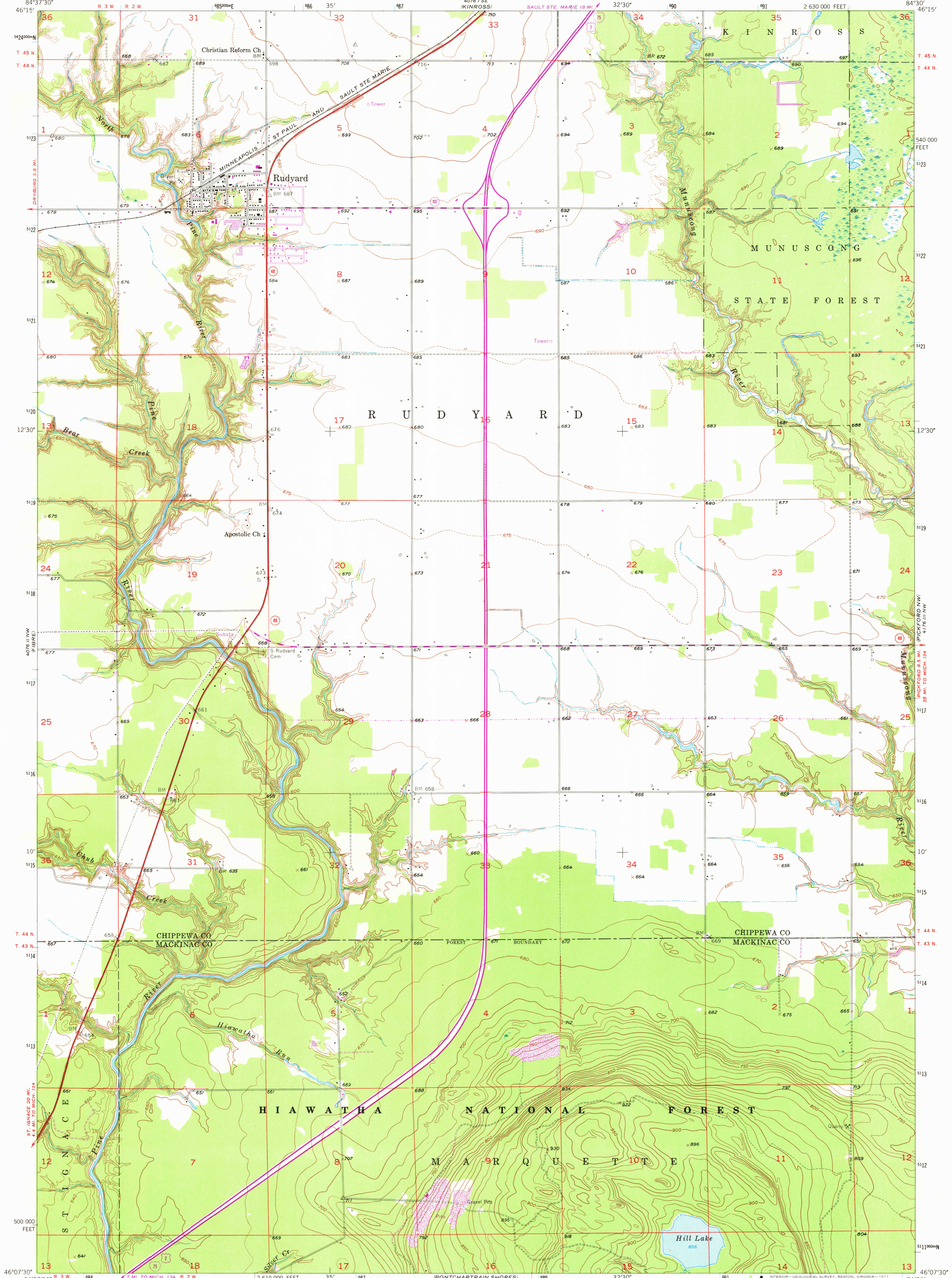


4076 I SE (KINROSS)

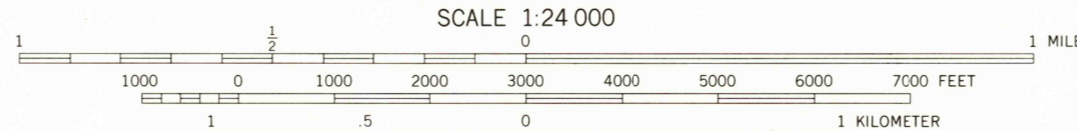
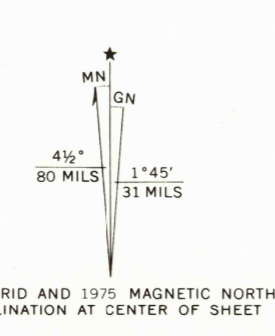
UNITED STATES
DEPARTMENT OF THE INTERIOR
GEOLOGICAL SURVEY

RUDYARD QUADRANGLE
MICHIGAN
7.5 MINUTE SERIES (TOPOGRAPHIC)

4076 II SE (PICKFORD NW)



Mapped, edited, and published by the Geological Survey
Control by USGS, USC&GS, and USCE
Topography from aerial photographs by Kelsch plotter
and by plane-table surveys 1953. Aerial photographs taken 1952
Polyconic projection, 1927 North American datum
10,000-foot grid based on Michigan coordinate system,
north zone
1000-meter Universal Transverse Mercator grid ticks, zone 16
shown in blue
Revisions shown in purple compiled from aerial photographs
taken 1975. This information not field checked



CONTOUR INTERVAL 10 FEET
DOTTED LINES REPRESENT 5-FOOT CONTOURS
NATIONAL GEODETIC VERTICAL DATUM OF 1929

ROAD CLASSIFICATION

Heavy-duty	Light-duty
Medium-duty	Unimproved dirt

U.S. Route
 State Route
 Interstate Route

QUADRANGLE LOCATION

THIS MAP COMPLIES WITH NATIONAL MAP ACCURACY STANDARDS
FOR SALE BY U.S. GEOLOGICAL SURVEY, RESTON, VIRGINIA 22092
A FOLDER DESCRIBING TOPOGRAPHIC MAPS AND SYMBOLS IS AVAILABLE ON REQUEST

USGS
Historical File
Topographic Division
1953
PHOTOREVISED 1975
AMS 4076 II NE—SERIES V862

SEP 26 1977
2750