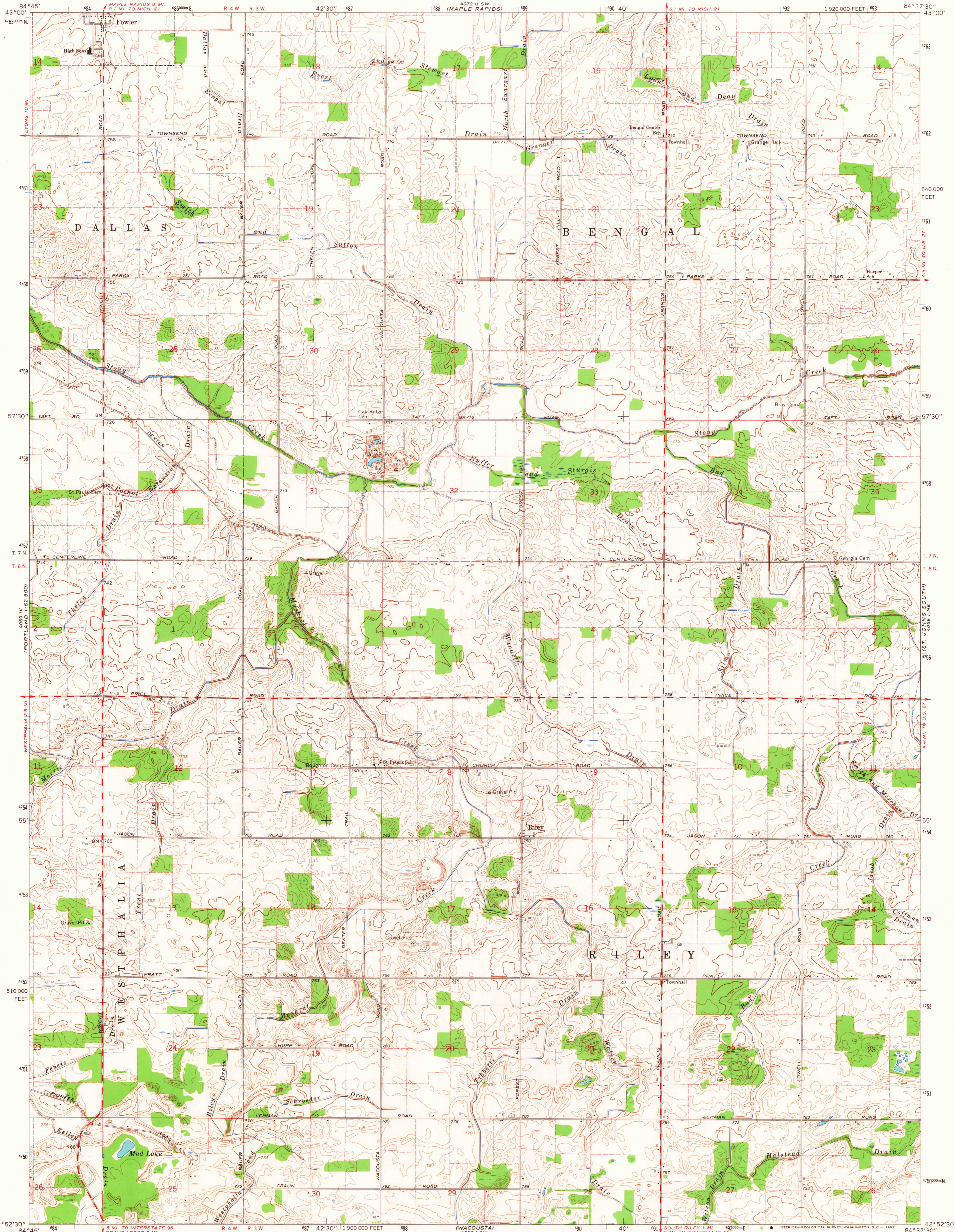
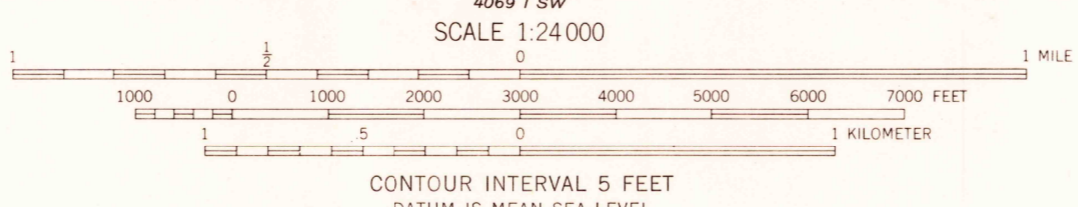
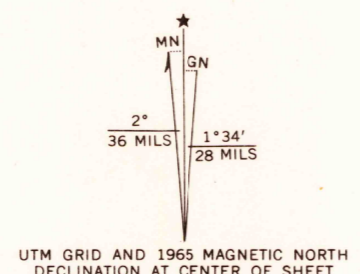


UNITED STATES
DEPARTMENT OF THE INTERIOR
GEOLOGICAL SURVEY

RILEY QUADRANGLE
MICHIGAN—CLINTON CO.
7.5 MINUTE SERIES (TOPOGRAPHIC)
NW/4 DE WITT 15' QUADRANGLE



Maped, edited, and published by the Geological Survey
Control by USGS and USC&GS
Topography by photogrammetric methods from aerial
photographs taken 1964. Field checked 1965
Polyconic projection. 1927 North American datum
10,000-foot grid based on Michigan coordinate system, south zone
1000-meter Universal Transverse Mercator grid ticks,
zone 16, shown in blue
Fine red dashed lines indicate selected fence and field lines where
generally visible on aerial photographs. This information is unchecked



USGS
Historical File
Topographic Division

ROAD CLASSIFICATION
Medium duty ——— Light duty ———
Unimproved dirt - - - - -



U.S.G.S.
FILE COPY
TOPOGRAPHIC DIVISION
RILEY, MICH.
NW/4 DE WITT 15' QUADRANGLE
N4252.5—W8437.5/7.5
1965
AMS 4069 I NW—SERIES Y862

THIS MAP COMPLIES WITH NATIONAL MAP ACCURACY STANDARDS
FOR SALE BY U. S. GEOLOGICAL SURVEY, WASHINGTON, D. C. 20242
A FOLDER DESCRIBING TOPOGRAPHIC MAPS AND SYMBOLS IS AVAILABLE ON REQUEST

2515
APR 12 1967