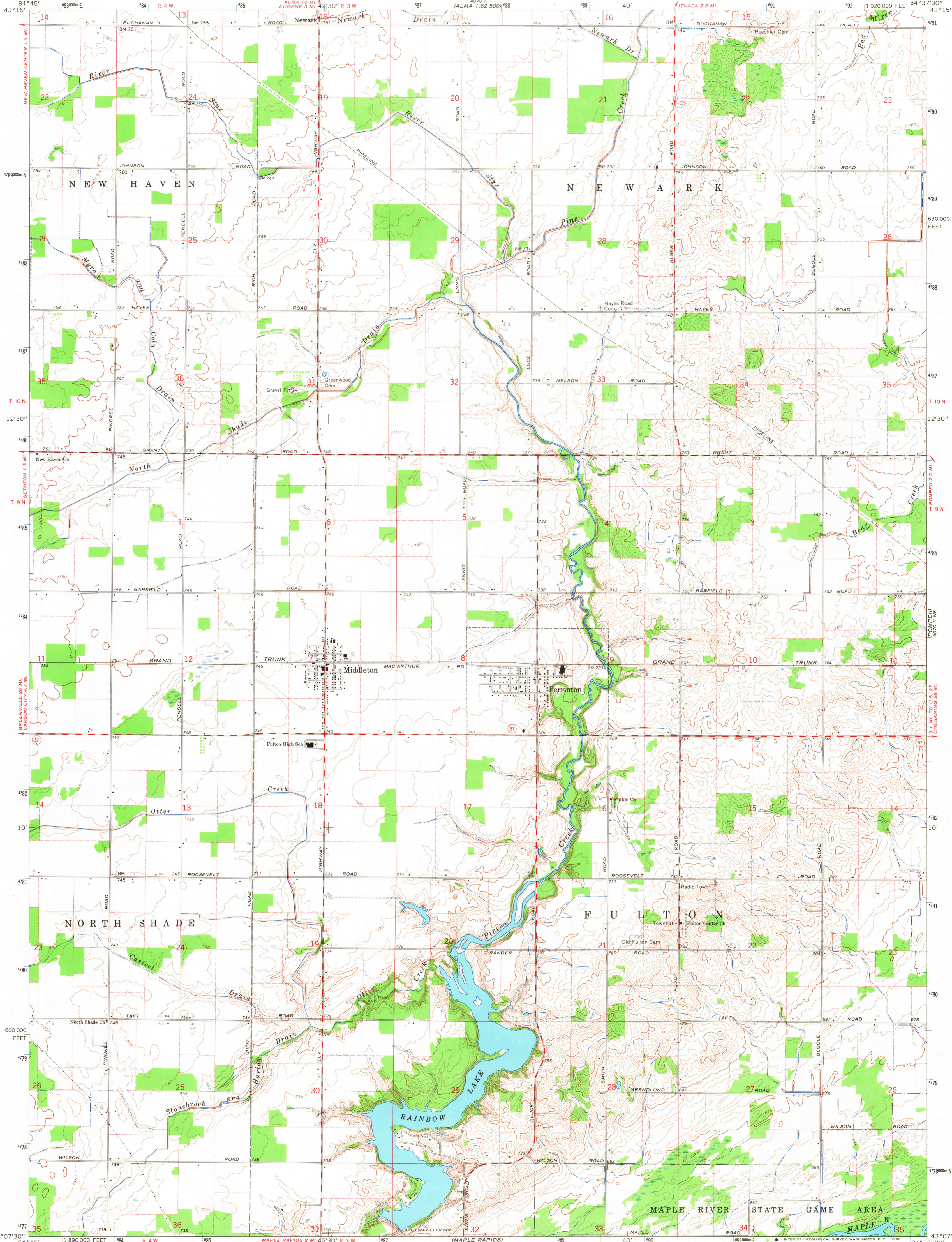


43° 15' N
84° 45' W

UNITED STATES
DEPARTMENT OF THE INTERIOR
GEOLOGICAL SURVEY

PERRINTON QUADRANGLE
MICHIGAN—GRATIOT CO.
7.5 MINUTE SERIES (TOPOGRAPHIC)
NW/4 PERRINTON 15' QUADRANGLE

43° 15' N
84° 37' 30" W

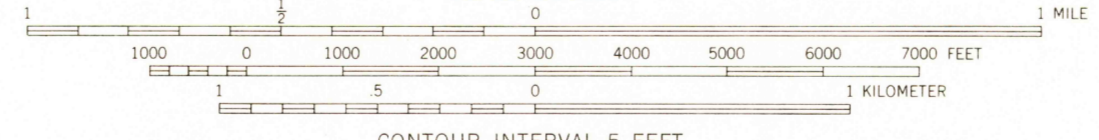
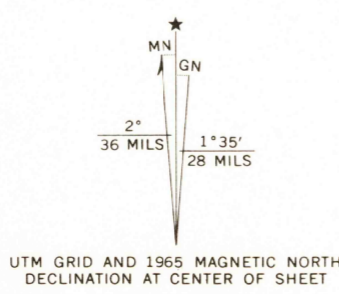


Mapped, edited, and published by the Geological Survey
Control by USGS and USC&GS

Topography by photogrammetric methods from aerial
photographs taken 1964. Field checked 1965

Polyconic projection. 1927 North American datum
10,000-foot grid based on Michigan coordinate system, south zone
100-meter Universal Transverse Mercator grid ticks,
zone 16, shown in blue

Fine red dashed lines indicate selected fence and field lines where
generally visible on aerial photographs. This information is unchecked



CONTOUR INTERVAL 5 FEET
DATUM IS MEAN SEA LEVEL

USGS
Historical File
Topographic Division

ROAD CLASSIFICATION
Medium-duty — Light-duty
Unimproved dirt —
State Route



QUADRANGLE LOCATION

U.S.G.S.
FILE COPY
TOPOGRAPHIC DIVISION

PERRINTON, MICH.
NW/4 PERRINTON 15' QUADRANGLE
N4307.5—W8437.5/7.5

1965
AMS 4070 II NW—SERIES V862

3065
JAN 6 1967

THIS MAP COMPLIES WITH NATIONAL MAP ACCURACY STANDARDS
FOR SALE BY U.S. GEOLOGICAL SURVEY, WASHINGTON, D. C. 20242
A FOLDER DESCRIBING TOPOGRAPHIC MAPS AND SYMBOLS IS AVAILABLE ON REQUEST